

# CERTIFICATE OF LOCATION OF GOVERNMENT CORNER

NORTHEAST Corner of Section 14, Township 115, Range 42, 5TH P.M.

STATE OF MINNESOTA, County of YELLOW MEDICINE

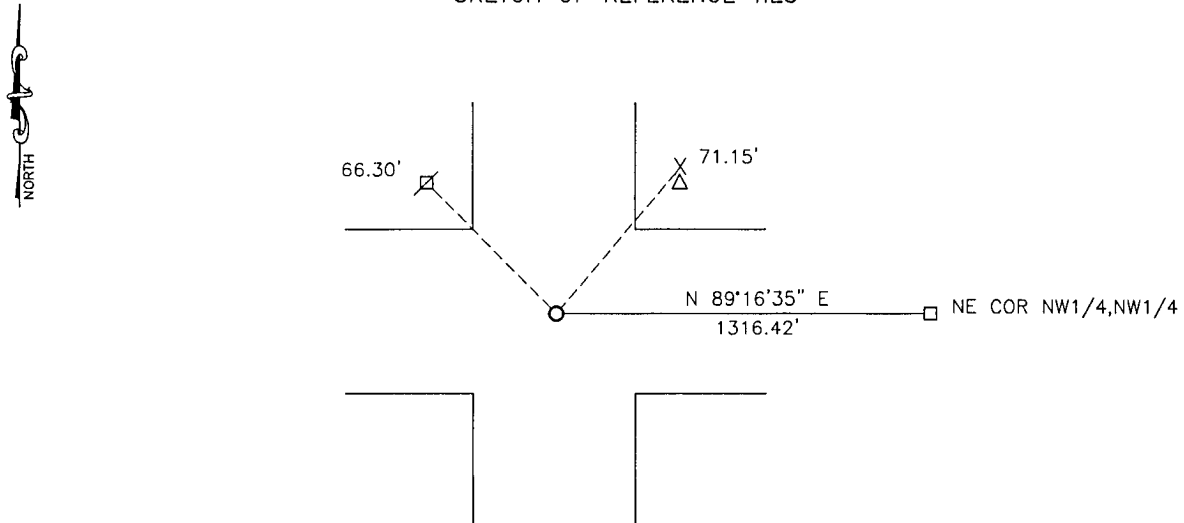
At the corner location shown on the sketch:

On 04-06-2017 found a COUNTY BRIDGE SPIKE  
DATE

left monument as found,  lowered monument,  removed monument (explain)

On 04-06-2017 placed a 5/8" IRON WITH SEAL #43844  
DATE

### SKETCH OF REFERENCE TIES



Minnesota State Plane Coordinate  
System Yellow Medicine County Datum  
NAD83 (1996)

N: 185482.491  
E: 508057.259

Nail and bottle cap in utility pole NW 66.30'  
Nail and bottle cap in pedestal guard post NE 71.15'

Statement of evidence relative to this corner location is on back of page.

I hereby certify that this document and the data contained herein was prepared by me or under my direct supervision.

[Signature] 2/26/18  
SIGNATURE DATE

Registration No. 43844

Land Surveyor,  Professional Engineer  
 County Surveyor,  County Engineer

**Doc# 268110 Fee: \$0.00 2 Pages**

Property & Public Services  
Property Records Division  
Yellow Medicine County, Minnesota  
I hereby certify that the within instrument was filed on March 28, 2018 at 12:15 PM

Janel Timm, Yellow Medicine County Recorder

By Kelly Kruger Deputy

## Statement of Evidence

In 1864, C.E. Davis and J.W. Web, Jr. did the original subdivision of the township.

No date, the Yellow Medicine County Highway Department found an iron pipe over stone at the corner and set a bridge spike over it.

On April 6, 2017, Bueltel-Moseng Land Surveying found a county bridge spike over a stone. We removed the bridge spike and set a 5/8" iron with seal #43844 in its place.