

# CERTIFICATE OF LOCATION OF GOVERNMENT CORNER

NORTHEAST Corner of Section 18, Township 115, Range 45, 5TH P.M.

STATE OF MINNESOTA, County of YELLOW MEDICINE

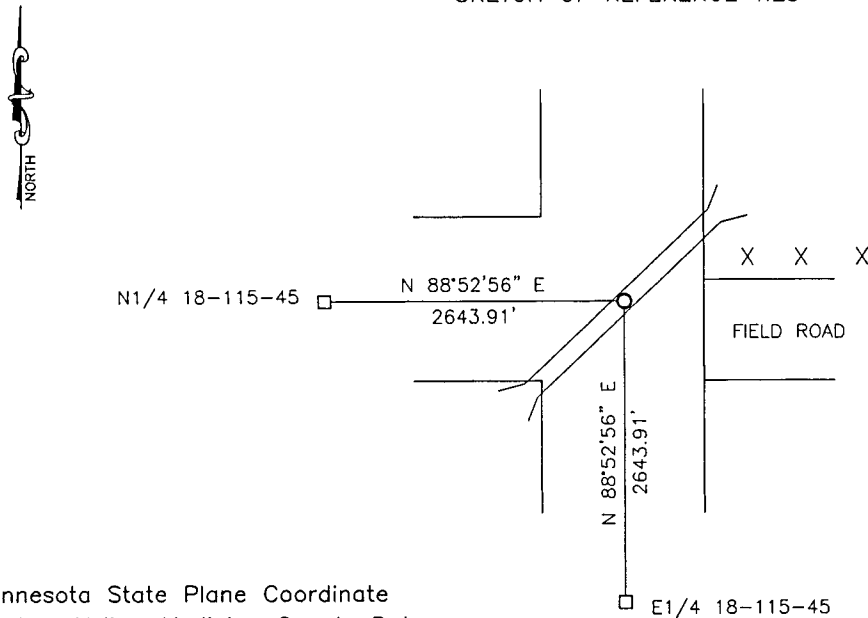
At the corner location shown on the sketch:

On 08-11-2017 found a IRON PIPE.  
DATE

left monument as found,  lowered monument,  removed monument (explain)

On \_\_\_\_\_ placed a \_\_\_\_\_  
DATE

### SKETCH OF REFERENCE TIES



Minnesota State Plane Coordinate  
 System Yellow Medicine County Datum  
 NAD83 (1996)

N: 185828.346  
 E: 391411.898

Statement of evidence relative to this corner location is on back of page.

I hereby certify that this document and the data contained herein was prepared by me or under my direct supervision.

[Signature] 3/12/18  
SIGNATURE DATE

Registration No. 43844

Land Surveyor,  Professional Engineer  
 County Surveyor,  County Engineer

**Doc# 268111 Fee: \$0.00 2 Pages**

Property & Public Services  
 Property Records Division  
 Yellow Medicine County, Minnesota  
 I hereby certify that the within instrument was filed on March 28, 2018 at 12:20 PM

Janel Timm, Yellow Medicine County Recorder

By Kelley Krueger Deputy

## Statement of Evidence

In 1871, Lewis Harrington did the original subdivision of the township.

In March, 1912, John Norgaard, County Surveyor, found the corner.

On April 1, 1982, Dale Boklep set an iron pipe in the center of the north, south, and west roads after learning that the highway department had removed the stone monument during construction.

On August 11, 2017, Bueltel-Moseng Land Surveying found an iron pipe at the corner.