

CERTIFICATE OF LOCATION OF GOVERNMENT CORNER

NORTH QUARTER Corner of Section 18, Township 115, Range 45, 5TH P.M.

STATE OF MINNESOTA, County of YELLOW MEDICINE

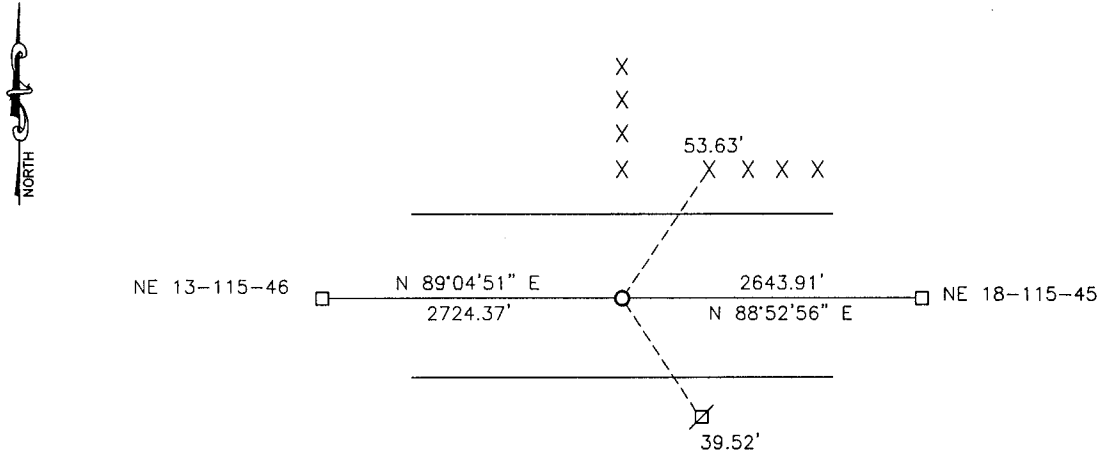
At the corner location shown on the sketch:

On _____ found a _____
DATE

left monument as found, lowered monument, removed monument (explain)

On 08-11-2017 placed a 5/8" IRON WITH SEAL #43844.
DATE

SKETCH OF REFERENCE TIES



Minnesota State Plane Coordinate
System Yellow Medicine County Datum
NAD83 (1996)

N: 185776.764
E: 388768.487

Nail and bottle cap in wood post NE 53.63'
Nail and bottle cap in utility pole SE 39.52'

Statement of evidence relative to this corner location is on back of page.

I hereby certify that this document and the data contained herein was prepared by me or under my direct supervision.

[Signature] 3/12/18
SIGNATURE DATE

Registration No. 43844

Land Surveyor, Professional Engineer
 County Surveyor, County Engineer

Doc# 268112 Fee: \$0.00 2 Pages

Property & Public Services
Property Records Division
Yellow Medicine County, Minnesota
I hereby certify that the within instrument was filed on March 28, 2018 at 12:25 PM

Janel Timm, Yellow Medicine County Recorder

By [Signature] Deputy

Statement of Evidence

In 1871, Lewis Harrington did the original subdivision of the township.

In March 1912, John Norgaard, County Surveyor, located the corner at proportionate distances between the section corners. It is not on line. He set a red brick at the corner.

On August 11, 2017, Bueltel-Moseng Land Surveying dug with a backhoe. We found nothing. We set a 5/8" iron with seal #43844 by splitting the right of way lines to the north and south and in line with the fence to the north. Occupation line is within 1.5'± of proportionate distances.