

# CERTIFICATE OF LOCATION OF GOVERNMENT CORNER

EAST QUARTER Corner of Section 18, Township 115, Range 45, 5TH P.M.

STATE OF MINNESOTA, County of YELLOW MEDICINE

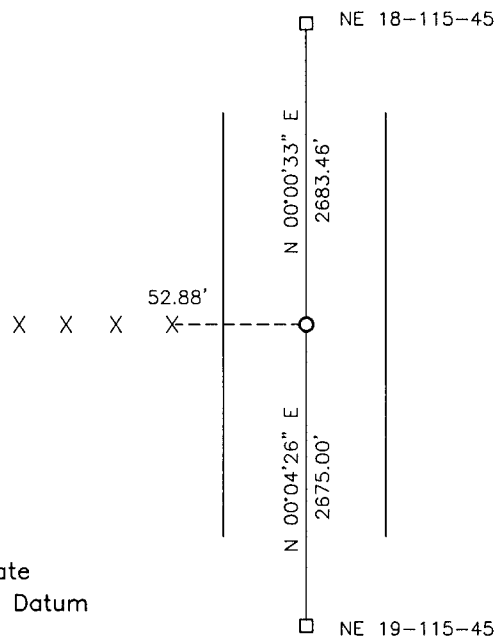
At the corner location shown on the sketch:

On \_\_\_\_\_ found a \_\_\_\_\_  
DATE

left monument as found,  lowered monument,  removed monument (explain)

On 08-11-2017 placed a 5/8" IRON WITH SEAL #43844.  
DATE

### SKETCH OF REFERENCE TIES



Minnesota State Plane Coordinate  
System Yellow Medicine County Datum  
NAD83 (1996)

N: 183144.884  
E: 391412.325

Nail and bottle cap in top of wood fence post West 52.88'

Statement of evidence relative to this corner location is on back of page.

I hereby certify that this document and the data contained herein was prepared by me or under my direct supervision.

[Signature] 3/12/18  
SIGNATURE DATE

Registration No. 43844

Land Surveyor,  Professional Engineer  
 County Surveyor,  County Engineer

**Doc# 268113 Fee: \$0.00 2 Pages**

Property & Public Services  
Property Records Division  
Yellow Medicine County, Minnesota  
I hereby certify that the within instrument was filed on March 28, 2018 at 12:30 PM

Janel Timm, Yellow Medicine County Recorder

By Kelly Kuger Deputy

## Statement of Evidence

In 1871, Lewis Harrington did the original subdivision of the township.

In March, 1912, John Norgaard, County Surveyor, located the corner at equal distances between the section corners, but not on line. He set a brick at the corner.

On August 11, 2017, Bueltel-Moseng Land Surveying dug with a backhoe. We found nothing. We set a 5/8" iron with seal #43844 in the center of the road and the recorded distance from the southeast corner of Section 18-115-45. The recorded distance from the south is in line with the occupation line to the west.