

CERTIFICATE OF LOCATION OF GOVERNMENT CORNER

NORTHEAST Corner of Section 19, Township 115, Range 45, 5TH P.M.

STATE OF MINNESOTA, County of YELLOW MEDICINE

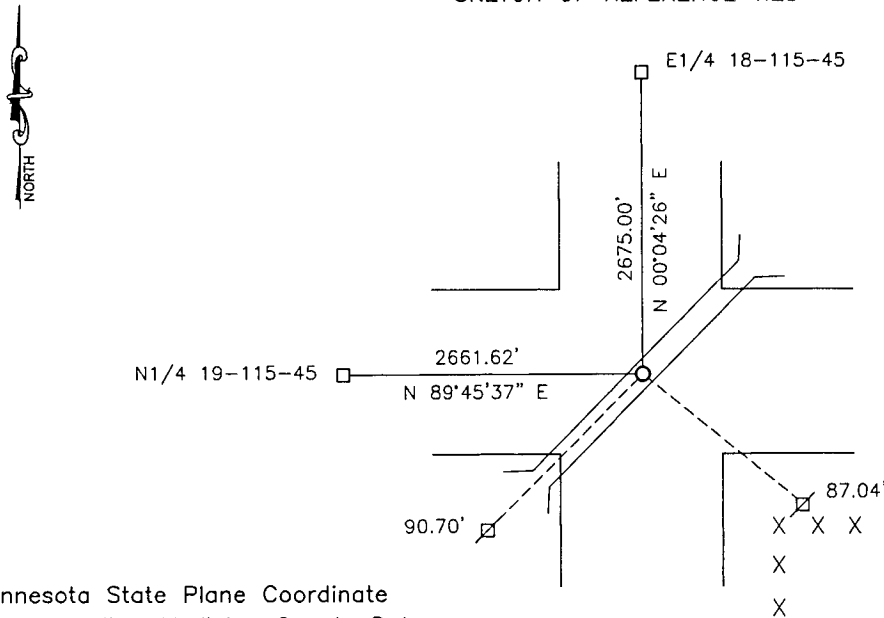
At the corner location shown on the sketch:

On 08-11-2017 found a BRIDGE SPIKE
DATE

left monument as found, lowered monument, removed monument (explain)

On 08-11-2017 placed a 5/8" IRON WITH SEAL #43844.
DATE

SKETCH OF REFERENCE TIES



Minnesota State Plane Coordinate
System Yellow Medicine County Datum
NAD83 (1996)

N: 180469.886
E: 391408.876

Nail and bottle cap in utility pole SW 90.70'
Nail and bottle cap in utility pole SE 87.04'

Statement of evidence relative to this corner location is on back of page.

I hereby certify that this document and the data contained herein was prepared by me or under my direct supervision.

[Signature] 3/12/18
SIGNATURE DATE

Registration No. 43844

Land Surveyor, Professional Engineer
 County Surveyor, County Engineer

Doc# 268114 Fee: \$0.00 2 Pages

Property & Public Services
Property Records Division
Yellow Medicine County, Minnesota
I hereby certify that the within instrument was filed on March 28, 2018 at 12:35 PM

Janel Timm, Yellow Medicine County Recorder

By Kelly Kauger Deputy

Statement of Evidence

In 1871, Lewis Harrington did the original subdivision of the township.

In March, 1912, John Norgaard, County Surveyor, found the corner.

In 1931, John Norgaard, County Surveyor, located the corner in the center of the roads to the north, south, east, and west. The monument that he found in 1912 had been dug out during construction.

On August 11, 2017, Bueltel-Moseng Land Surveying found a large bridge spike in the center of the intersection. We removed the spike and set a 5/8" iron with seal #43844 in its place. We did not dig, there is a culvert directly under the center of the intersection.