

CERTIFICATE OF LOCATION OF GOVERNMENT CORNER

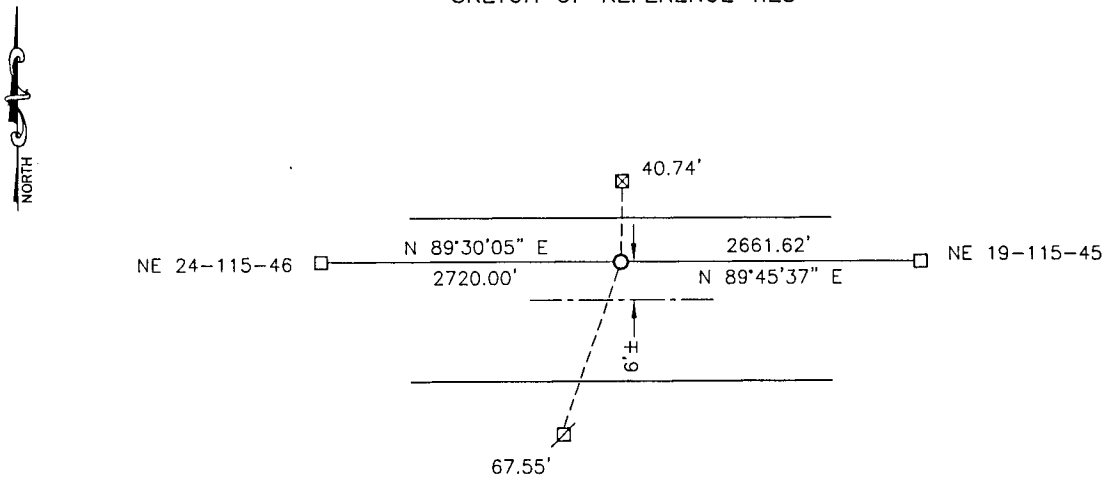
NORTH QUARTER Corner of Section 19, Township 115, Range 45, 5TH P.M.

STATE OF MINNESOTA, County of YELLOW MEDICINE

At the corner location shown on the sketch:

- On _____ found a _____
DATE
- left monument as found, lowered monument, removed monument (explain)
- On 08-11-2017 placed a 5/8" IRON WITH SEAL #43844.
DATE

SKETCH OF REFERENCE TIES



Minnesota State Plane Coordinate
 System Yellow Medicine County Datum
 NAD83 (1996)

N: 180458.747
 E: 388747.283

Nail and bottle cap in cut-off utility pole North 40.74'
 Nail and bottle cap in utility pole SW 67.55'
 Corner is 6'± north of the center of the road.

Statement of evidence relative to this corner location is on back of page.

I hereby certify that this document and the data contained herein was prepared by me or under my direct supervision.

[Signature] 3/12/18
SIGNATURE DATE

Registration No. 43844

- Land Surveyor, Professional Engineer
 County Surveyor, County Engineer

Doc# 268115 Fee: \$0.00 2 Pages

Property & Public Services
 Property Records Division
 Yellow Medicine County, Minnesota
 I hereby certify that the within instrument was filed on March 28, 2018 at 12:40 PM

Janel Timm, Yellow Medicine County Recorder

By Kelly Kueger Deputy

Statement of Evidence

In 1871, Lewis Harrington did the original subdivision of the township.

In March, 1912, John Norgaard, County Surveyor, located the corner at proportionate distances between the section corners. It is not on line. He set a red brick on the north side of the road.

On August 11, 2017, Bueltel-Moseng Land Surveying dug with a backhoe. We found nothing. We set a 5/8" iron with seal #43844 by going 6'± (average width of a township road) north of the center of the road and the recorded distance from the northwest corner of Section 19-115-45. The recorded distance from the west is in line with the occupation line to the north.