

CERTIFICATE OF LOCATION OF GOVERNMENT CORNER

NORTHEAST Corner of Section 13, Township 115, Range 46, 5TH P.M.

STATE OF MINNESOTA, County of YELLOW MEDICINE

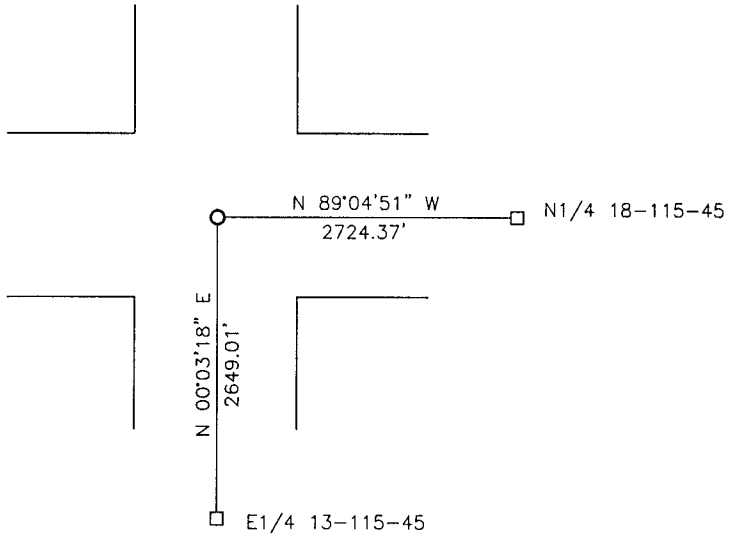
At the corner location shown on the sketch:

On 08-11-2017 found a GRANITE MONUMENT
DATE

left monument as found, lowered monument, removed monument (explain)

On 08-11-2017 placed a 5/8" IRON WITH SEAL #43844 OVER GRANITE MONUMENT.
DATE

SKETCH OF REFERENCE TIES



Minnesota State Plane Coordinate
System Yellow Medicine County Datum
NAD83 (1996)

N: 185733.057
E: 386044.472

Statement of evidence relative to this corner location is on back of page.

I hereby certify that this document and the data contained herein was prepared by me or under my direct supervision

[Signature] 3/12/18
SIGNATURE DATE

Registration No. 43844

Land Surveyor, Professional Engineer
 County Surveyor, County Engineer

Doc# 268117 Fee: \$0.00 2 Pages

Property & Public Services
Property Records Division
Yellow Medicine County, Minnesota
I hereby certify that the within instrument
was filed on March 28, 2018 at 12:50 PM

Janel Timm, Yellow Medicine County Recorder

By *[Signature]* Deputy

Statement of Evidence

In 1858, W.J. Neely did the original survey of the east line of the township.

In March, 1912, John Norgaard, County Surveyor, found the corner.

On August 11, 2107, Bueltel-Moseng Land Surveying found a granite stone with a spike over it. We removed the spike and set a 5/8" iron with seal #43844 over the stone.