

CERTIFICATE OF LOCATION OF GOVERNMENT CORNER

NORTH QUARTER Corner of Section 11, Township 114 N, Range 46 W

5th Principal Meridian, State of Minnesota, County of Yellow Medicine.

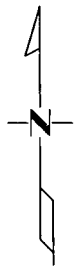
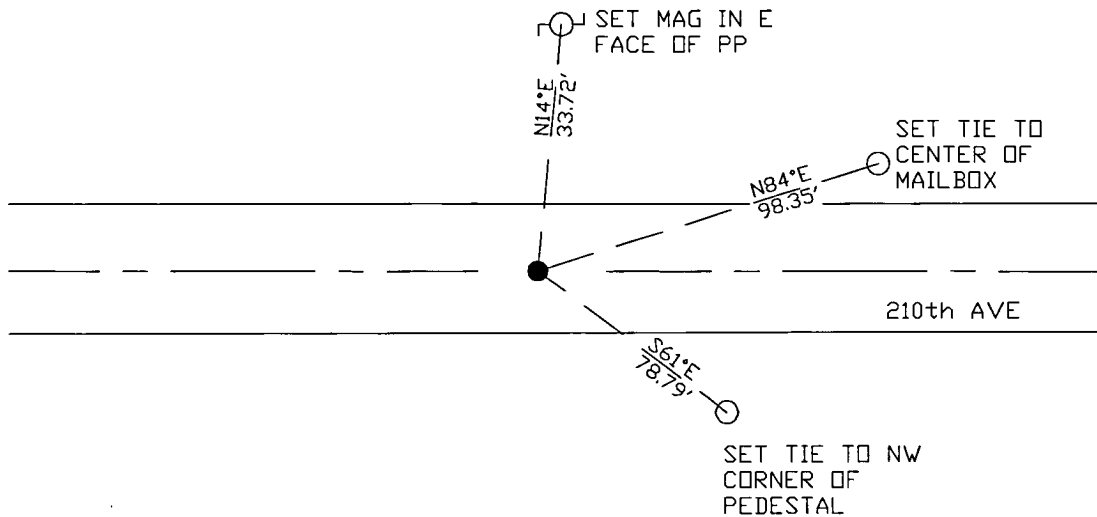
At the corner location shown on the sketch:

On 10/27/17 found a 6X7X11 stone with bar, smaller stones and wood fragments.
DATE

left monument as found lowered monument removed monument (explain)

On 12/09/17 placed a Set a 1/2" rebar with cap LS45874 above found stone.
DATE

SKETCH OF REFERENCE TIES



N.T.S.

Statement of evidence for this corner location is on back of this page.

I hereby certify that this document was researched and prepared by me or under my direct supervision and that I am a licensed Land Surveyor under the laws of the State of Minnesota.

Signature *[Handwritten Signature]*

Date 3/26/18 License No. 45874

Title:

- Land Surveyor Professional Engineer
 County Surveyor County Engineer

Doc# 268198 Fee: \$0.00 2 Pages

Property & Public Services
 Property Records Division
 Yellow Medicine County, Minnesota
 I hereby certify that the within instrument was filed on April 5, 2018 at 11:30 AM

Janel Timm, Yellow Medicine County Recorder

By *[Handwritten Signature]* Deputy

STATEMENT OF EVIDENCE:

NORTH QUARTER OF SECTION 11, T114N, R46W, 5TH PM

1871 Corner was originally established by the U.S. General Land Office as a post set in raised mound.

1918 Surveyors Record Book Page 411 surveyed Section 2 and found stake in mound and set Stone 6"x7"x18"

2017-12-09 Westwood PS excavated for the corner and found a stone 6x7x11 with bar, smaller stones and wood fragments around it. Accepting as corner location and set 1/2" rebar with cap LS45874 over found stone. Set 3 reference ties.