

CERTIFICATE OF LOCATION OF GOVERNMENT CORNER

EAST QUARTER Corner of Section 9, Township 114 N, Range 46 W
 5th Principal Meridian, State of Minnesota, County of Yellow Medicine.

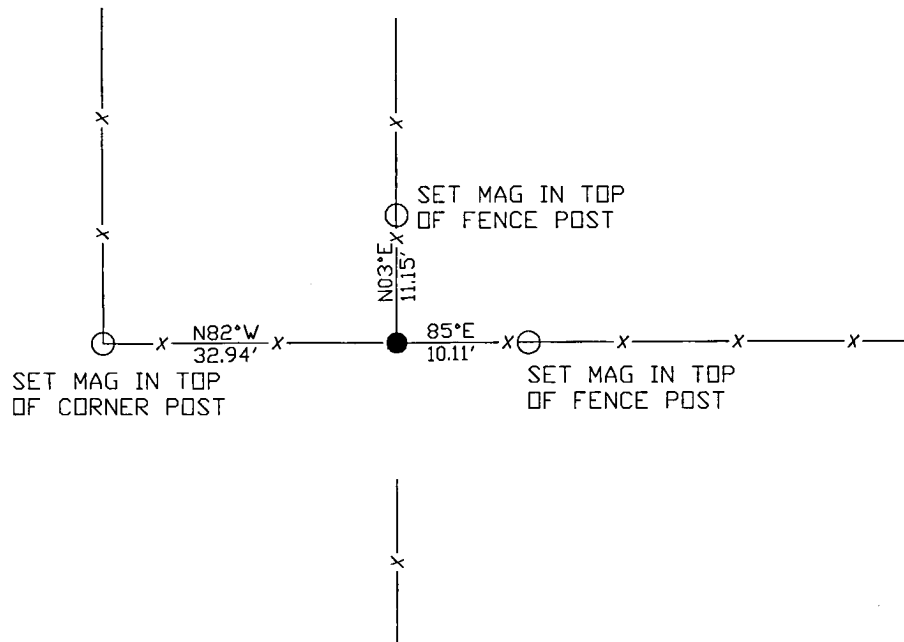
At the corner location shown on the sketch:

On 11/02/17 found a rebar with cap LS19092
DATE

left monument as found lowered monument removed monument (explain)

On _____ placed a _____
DATE

SKETCH OF REFERENCE TIES



N.T.S.

Statement of evidence for this corner location is on back of this page.

I hereby certify that this document was researched and prepared by me or under my direct supervision and that I am a licensed Land Surveyor under the laws of the State of Minnesota.

Signature *[Signature]*

Date 3/26/18 License No. 45874

Title:

- Land Surveyor Professional Engineer
 County Surveyor County Engineer

Doc# 268200 Fee: \$0.00 2 Pages

Property & Public Services
 Property Records Division
 Yellow Medicine County, Minnesota
 I hereby certify that the within instrument was filed on April 5, 2018 at 12:05 PM

Janel Timm, Yellow Medicine County Recorder

By *[Signature]* Deputy

STATEMENT OF EVIDENCE:

EAST QUARTER OF SECTION 9, T114N, R46W, 5TH PM

1871 Corner was originally established by the U.S. General Land Office as a post set in raised mound.

undated township resurvey – distance to NE section corner shown as 2640' and distance to SE section corner 2620'.

2017-11-02 Westwood PS searched the area and found a rebar with cap LS19092 at fence corner running north-south-east. Distances to section corners north and south fit within 5 ft to the township resurvey. Accepting as corner location and set 3 reference ties.