

CERTIFICATE OF LOCATION OF GOVERNMENT CORNER

EAST QUARTER Corner of Section 35, Township 114 N, Range 46 W

5th Principal Meridian, State of Minnesota, County of Yellow Medicine.

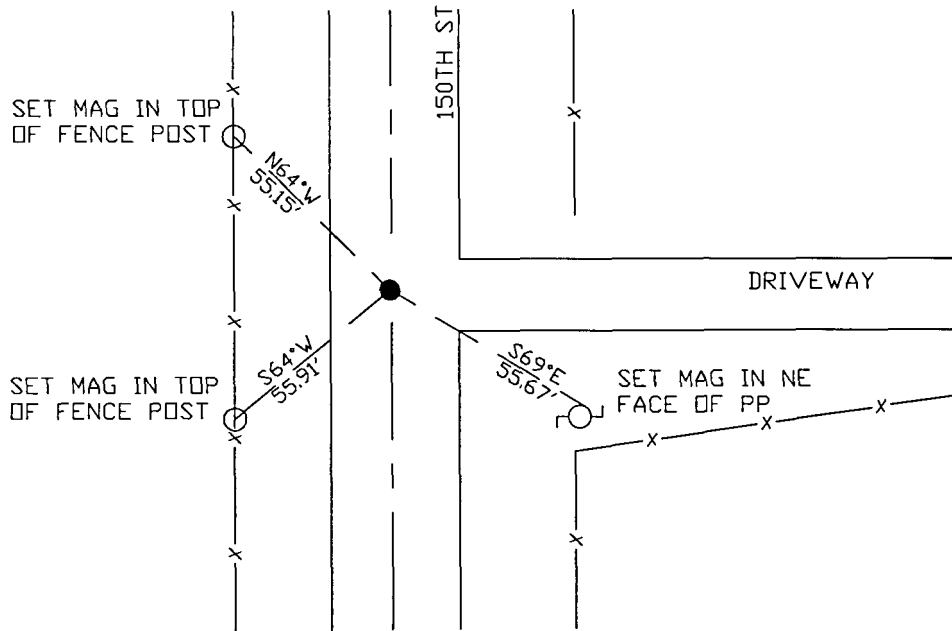
At the corner location shown on the sketch:

On 10/25/17 found a 1/2" open pipe.
DATE

left monument as found lowered monument removed monument (explain)

On _____ placed a _____
DATE

SKETCH OF REFERENCE TIES



N.T.S.

Statement of evidence for this corner location is on back of this page.

I hereby certify that this document was researched and prepared by me or under my direct supervision and that I am a licensed Land Surveyor under the laws of the State of Minnesota.

Signature *Janel Timm*

Date 3/26/18 License No. 45874

Title:

- Land Surveyor Professional Engineer
 County Surveyor County Engineer

Doc# 268207 Fee: \$0.00 2 Pages

Property & Public Services
 Property Records Division
 Yellow Medicine County, Minnesota
 I hereby certify that the within instrument was filed on April 5, 2018 at 12:40 PM

Janel Timm, Yellow Medicine County Recorder

By *Kelly Kueger* Deputy

STATEMENT OF EVIDENCE:

EAST QUARTER OF SECTION 35, T114N, R46W, 5TH PM

1871 Corner was originally established by the U.S. General Land Office as a post set in raised mound.

1909 John Norgaard, County Surveyor, completed a survey in Section 35, Surveyors Record Book page 196, in which he located on line and at equal distances between section corners.

2014 Roy Marihart completed a survey in Section 36 in which he found the West Quarter corner. Measured 2623.33' to the NW corner and 2623.56' to the SW corner of said section.

2017-10-25 Westwood PS searched the area and found a 1/2" pipe which agrees with the 2014 survey by Roy Marihart. Accepting as corner location and set 3 reference ties.