

# CERTIFICATE OF LOCATION OF GOVERNMENT CORNER

WITNESS CORNER TO EAST QUARTER Corner of Section 33, Township 114 N, Range 46 W  
 5th Principal Meridian, State of Minnesota, County of Yellow Medicine.

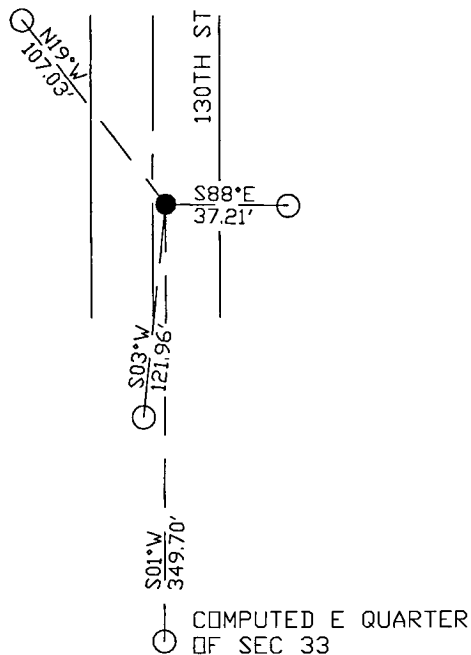
At the corner location shown on the sketch:

On 10/25/17 found a rebar with cap LS 17003 at 349.70 ft north of true corner  
DATE location. The true corner location is under water

left monument as found       lowered monument       removed monument (explain)

On \_\_\_\_\_ placed a \_\_\_\_\_  
DATE

SKETCH OF REFERENCE TIES



N.T.S.

Statement of evidence for this corner location is on back of this page.

I hereby certify that this document was researched and prepared by me or under my direct supervision and that I am a licensed Land Surveyor under the laws of the State of Minnesota.

Signature *Janel Timm*

Date 3/26/18 License No. 45874

Title:

- Land Surveyor       Professional Engineer  
 County Surveyor       County Engineer

**Doc# 268208 Fee: \$0.00 2 Pages**

Property & Public Services  
 Property Records Division  
 Yellow Medicine County, Minnesota  
 I hereby certify that the within instrument was filed on April 5, 2018 at 12:45 PM

Janel Timm, Yellow Medicine County Recorder

By *Kelly Kauger* Deputy

STATEMENT OF EVIDENCE:

EAST QUARTER OF SECTION 33, T114N, R46W, 5TH PM

*1871 Corner was originally established by the U.S. General Land Office as a post set in raised mound.*

*1913 Surveyor Record Book contains a survey by John Norgaard, County Surveyor, in which the monument is in place and measures 2643 to the NE corner Section 33 and 2637 to the SE corner Section 33.*

*2001 MN DNR completed a survey for Sections 33 and 34 in which they found stone monument at the corner location, and filed a corner record dated 06/04/01.*

*N: 135637.472*

*E: 370101.012*

*2017-10-25 - section corner location is under water. Located property corner monument (rebar capped LS 17003) from 2001 DNR survey to use as a witness corner to the true corner position, and established reference ties.*