

CERTIFICATE OF LOCATION OF GOVERNMENT CORNER

EAST QUARTER Corner of Section 30, Township 114 N, Range 46 W

5th Principal Meridian, State of Minnesota, County of Yellow Medicine.

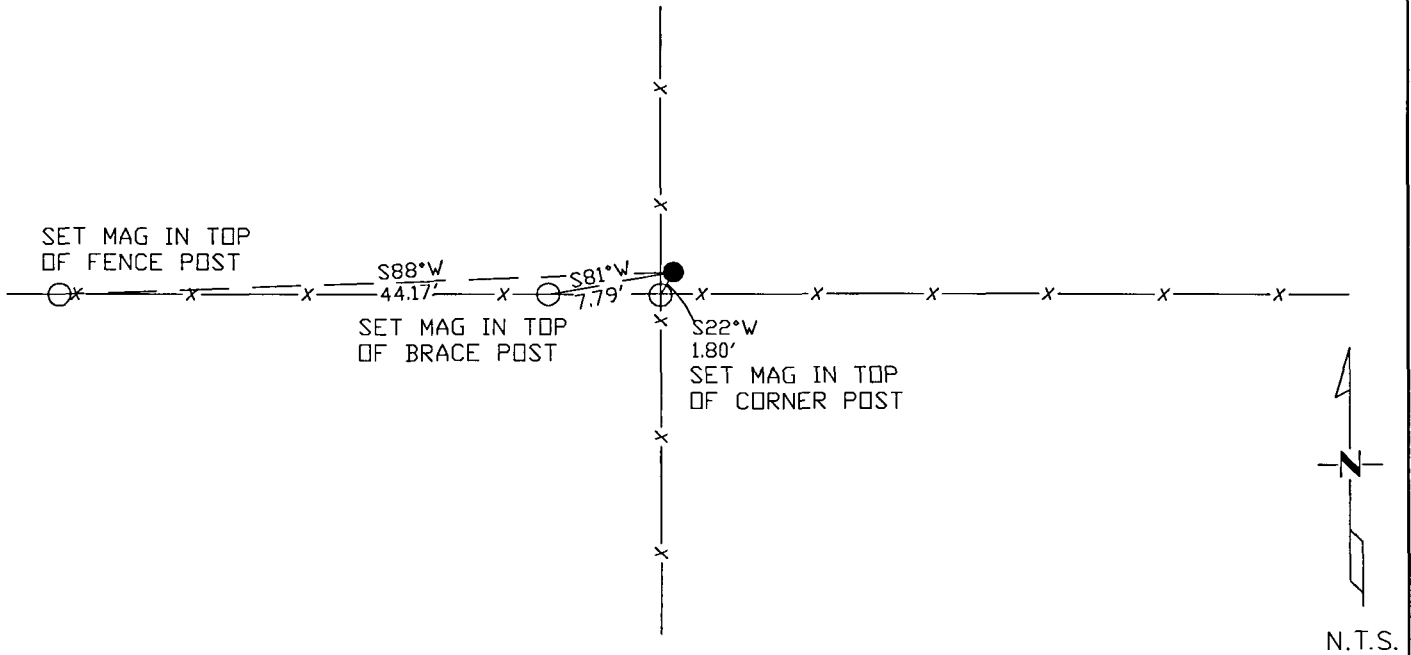
At the corner location shown on the sketch:

On _____ found a _____
DATE

left monument as found lowered monument removed monument (explain)

On 12/09/17 placed a 1/2" rebar with cap LS45874.
DATE

SKETCH OF REFERENCE TIES



Statement of evidence for this corner location is on back of this page.

I hereby certify that this document was researched and prepared by me or under my direct supervision and that I am a licensed Land Surveyor under the laws of the State of Minnesota.

Signature *Jim [unclear]*
Date 3/26/18 License No. 45874

Title:

- Land Surveyor Professional Engineer
 County Surveyor County Engineer

Doc# 268209 Fee: \$0.00 2 Pages

Property & Public Services
 Property Records Division
 Yellow Medicine County, Minnesota
 I hereby certify that the within instrument was filed on April 5, 2018 at 12:50 PM

Janel Timm, Yellow Medicine County Recorder

By *Kelly Kauger* Deputy

STATEMENT OF EVIDENCE:

EAST QUARTER OF SECTION 30, T114N, R46W, 5TH PM

1871 Corner was originally established by the U.S. General Land Office as a post set in raised mound.

1920 Surveyors Record Book page 436, set online and equal distance between Section Corners (2626').

2017-12-09 Westwood PS searched the area and found nothing. Set 1/2" rebar with cap LS45874 at lost position which fits within 1 ft of distances reported on 1920 survey of Section 29.