

# CERTIFICATE OF LOCATION OF GOVERNMENT CORNER

EAST QUARTER Corner of Section 18, Township 114 N, Range 46 W

5th Principal Meridian, State of Minnesota, County of Yellow Medicine.

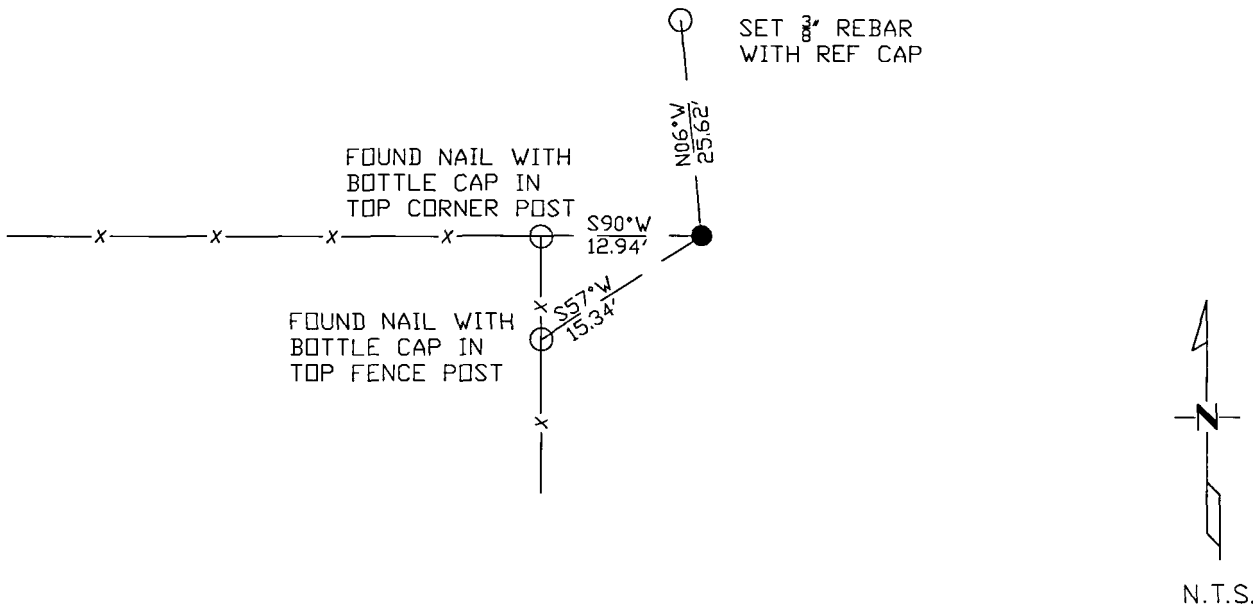
At the corner location shown on the sketch:

On 10/27/17 found a rebar with cap LS11943.  
DATE

left monument as found       lowered monument       removed monument (explain)

On \_\_\_\_\_ placed a \_\_\_\_\_  
DATE

### SKETCH OF REFERENCE TIES



N.T.S.

Statement of evidence for this corner location is on back of this page.

I hereby certify that this document was researched and prepared by me or under my direct supervision and that I am a licensed Land Surveyor under the laws of the State of Minnesota.

Signature *[Handwritten Signature]*  
 Date 3/26/18 License No. 45874

Title:

- Land Surveyor       Professional Engineer  
 County Surveyor       County Engineer

**Doc# 268221 Fee: \$0.00 2 Pages**

Property & Public Services  
 Property Records Division  
 Yellow Medicine County, Minnesota  
 I hereby certify that the within instrument was filed on April 5, 2018 at 1:50 PM

Janel Timm, Yellow Medicine County Recorder

By *[Handwritten Signature]* Deputy

STATEMENT OF EVIDENCE:

EAST QUARTER OF SECTION 18, T114N, R46W, 5TH PM

*1871 Corner was originally established by the U.S. General Land Office as a post set in raised mound.*

*1977 Lyle Moseng filed a corner record dated 03/08/1977 in which he set a #4 rebar with seal 7' south of a direct split and in line with section corners and in line with fence to the west.*

*2017-10-27 Westwood PS searched the area and found a rebar with cap LS11943 and 2 ties from 1977 corner record by Lyle Moseng. Accepting as corner location and set 1 additional tie.*