

CERTIFICATE OF LOCATION OF GOVERNMENT CORNER

EAST QUARTER Corner of Section 13, Township 114 N, Range 46 W

5th Principal Meridian, State of Minnesota, County of Yellow Medicine.

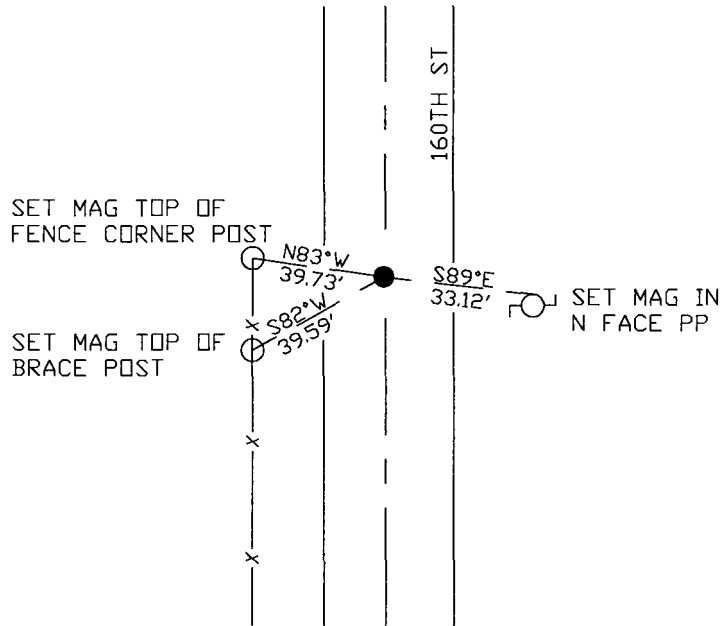
At the corner location shown on the sketch:

On 10/25/17 found a 1/2" rebar with illegible cap, 0.2' down.
DATE

left monument as found lowered monument removed monument (explain)

On _____ placed a _____
DATE

SKETCH OF REFERENCE TIES



N.T.S.

Statement of evidence for this corner location is on back of this page.

I hereby certify that this document was researched and prepared by me or under my direct supervision and that I am a licensed Land Surveyor under the laws of the State of Minnesota.

Signature *[Handwritten Signature]*
 Date 3/26/18 License No. 45874

Title:

- Land Surveyor Professional Engineer
 County Surveyor County Engineer

Doc# 268224 Fee: \$0.00 2 Pages

Property & Public Services
 Property Records Division
 Yellow Medicine County, Minnesota
 I hereby certify that the within instrument was filed on April 5, 2018 at 2:05 PM

Janel Timm, Yellow Medicine County Recorder

By *[Handwritten Signature]* Deputy

STATEMENT OF EVIDENCE:

EAST QUARTER OF SECTION 13, T114N, R46W, 5TH PM

1858 Corner was originally established by the U.S. General Land Office as a post set in raised mound.

Undated Resurvey in Record Book page 41 shows a distance of 2645 between SE cor and E1/4 cor Section 13, and a distance of 2640 between E1/4 cor and NE corner Section 13.

2017-10-25 Westwood PS searched the area and found rebar with illegible cap at the midpoint distance between NE and SE section corners. Accepting as corner location and set 3 reference ties.