

CERTIFICATE OF LOCATION OF GOVERNMENT CORNER

CENTER _____ Corner of Section 24, Township 114 N, Range 46 W
 5th Principal Meridian, State of Minnesota, County of Yellow Medicine.

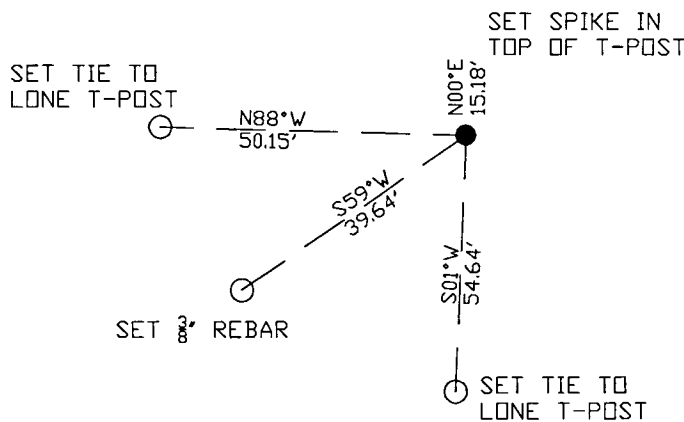
At the corner location shown on the sketch:

On 12/07/17 found a 20x11x11 stone lying over with smaller stones around it.
DATE

left monument as found lowered monument removed monument (explain)

On 12/07/17 placed a 1/2" rebar with cap LS45874.
DATE

SKETCH OF REFERENCE TIES



N.T.S.

Statement of evidence for this corner location is on back of this page.

I hereby certify that this document was researched and prepared by me or under my direct supervision and that I am a licensed Land Surveyor under the laws of the State of Minnesota.

Signature *Jim Lee*
 Date 3/26/18 License No. 45874

Title:

- Land Surveyor Professional Engineer
 County Surveyor County Engineer

Doc# 268227 Fee: \$0.00 2 Pages

Property & Public Services
 Property Records Division
 Yellow Medicine County, Minnesota
 I hereby certify that the within instrument was filed on April 5, 2018 at 2:20 PM

Janel Timm, Yellow Medicine County Recorder

By *Kelly Kruger* Deputy

STATEMENT OF EVIDENCE:

CENTER OF SECTION 24, T114N, R46W, 5TH PM

1896 Surveyors Record Book page 126 survey completed for Section 24 in which shows a Stone with small around it at corner location.

2017-12-07 Westwood PS searched the area and found 20x11x11 stone lying over with smaller stones around it. Accepting stone as corner location and set a 1/2" rebar with cap LS45874 at stone location. Set 3 reference ties.