

CERTIFICATE OF LOCATION OF GOVERNMENT CORNER

WEST QUARTER _____ Corner of Section 30, Township 114 N, Range 46 W

5th Principal Meridian, State of Minnesota, County of Yellow Medicine.

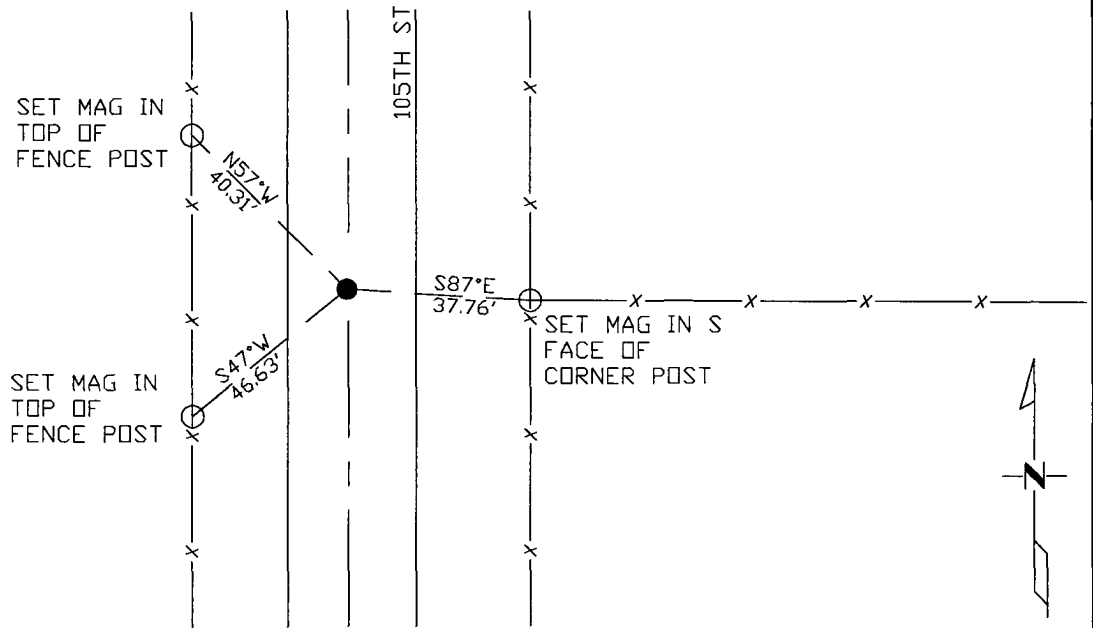
At the corner location shown on the sketch:

On 10/25/17 found a rebar with cap LS19092.
DATE

left monument as found lowered monument removed monument (explain)

On _____ placed a _____
DATE

SKETCH OF REFERENCE TIES



N.T.S.

Statement of evidence for this corner location is on back of this page.

I hereby certify that this document was researched and prepared by me or under my direct supervision and that I am a licensed Land Surveyor under the laws of the State of Minnesota.

Signature *Janel Timm*
 Date 3/26/18 License No. 45874

Title:

- Land Surveyor Professional Engineer
 County Surveyor County Engineer

Doc# 268229 Fee: \$0.00 2 Pages

**Property & Public Services
 Property Records Division
 Yellow Medicine County, Minnesota**
 I hereby certify that the within instrument was filed on April 5, 2018 at 2:30 PM

Janel Timm, Yellow Medicine County Recorder

By *Kelly Kauger* Deputy

STATEMENT OF EVIDENCE:

WEST QUARTER OF SECTION 30, T114N, R46W, 5TH PM

Corner was not set during original government survey

2008 Roy Marihart completed a survey for Sections 19+20 in which he found a monument at the W1/4 corner Section 30 and used it to set the SW corner of Section 19, measured 2643.12' between said corners.

2017-10-25 Westwood PS searched the area and found rebar with cap LS19092 which fits the location indicated by 2008 survey. Accepting monument as the corner location and set 3 reference ties.