

CERTIFICATE OF LOCATION OF GOVERNMENT CORNER

NORTHWEST Corner of Section 7, Township 114 N, Range 46 W
 5th Principal Meridian, State of Minnesota, County of Yellow Medicine.

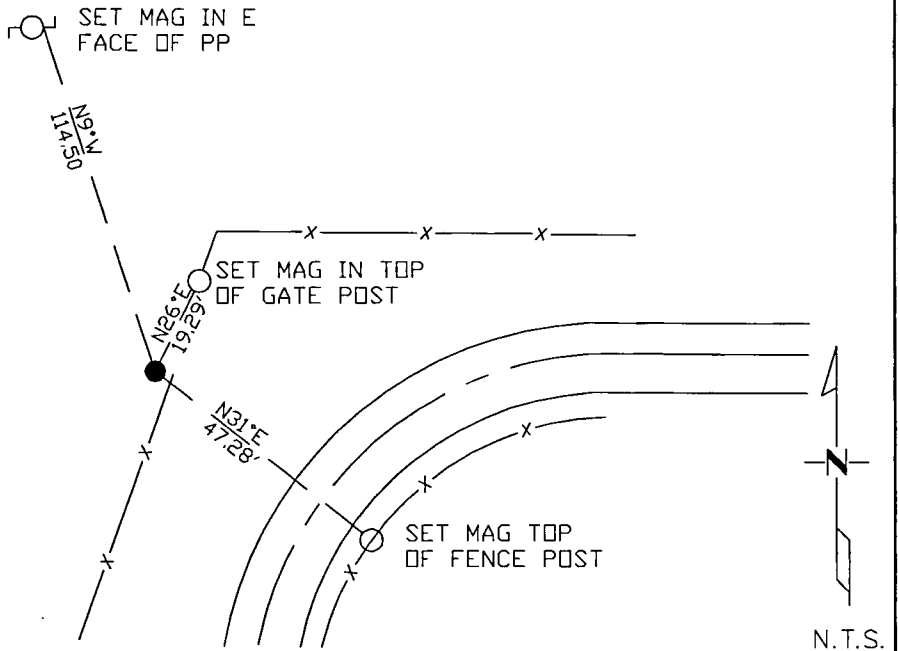
At the corner location shown on the sketch:

On _____ found a _____
DATE

left monument as found lowered monument removed monument (explain)

On 12/09/17 placed a 1/2" rebar with cap LS45874.
DATE

SKETCH OF REFERENCE TIES



Statement of evidence for this corner location is on back of this page.

I hereby certify that this document was researched and prepared by me or under my direct supervision and that I am a licensed Land Surveyor under the laws of the State of Minnesota.

Signature *[Handwritten Signature]*
 Date 3/26/18 License No. 45874

Title:

- Land Surveyor Professional Engineer
 County Surveyor County Engineer

Doc# 268230 Fee: \$0.00 2 Pages

Property & Public Services
 Property Records Division
 Yellow Medicine County, Minnesota
 I hereby certify that the within instrument was filed on April 5, 2018 at 2:35 PM

Janel Timm, Yellow Medicine County Recorder

By *[Handwritten Signature]* Deputy

STATEMENT OF EVIDENCE:

NORTHWEST OF SECTION 7, T114N, R46W, 5TH PM

1902 Re-Survey of State-Line calls out a monument in place at the corner location.

Undated township resurvey – A jasper monument 2 ft long and 6"x6" was set. A distance of 5265' to the SW section corner is noted.

2017-12-09 Westwood PS searched the area and found nothing. Set 1/2" rebar with cap LS45874 at extension of north line of Section 7 and on line with centerline road running south (measured distance of approx. 5275' to SW section corner). Set 3 reference ties.