

# CERTIFICATE OF LOCATION OF GOVERNMENT CORNER

NORTHEAST Corner of Section 6, Township 114 N, Range 46 W

5th Principal Meridian, State of Minnesota, County of Yellow Medicine.

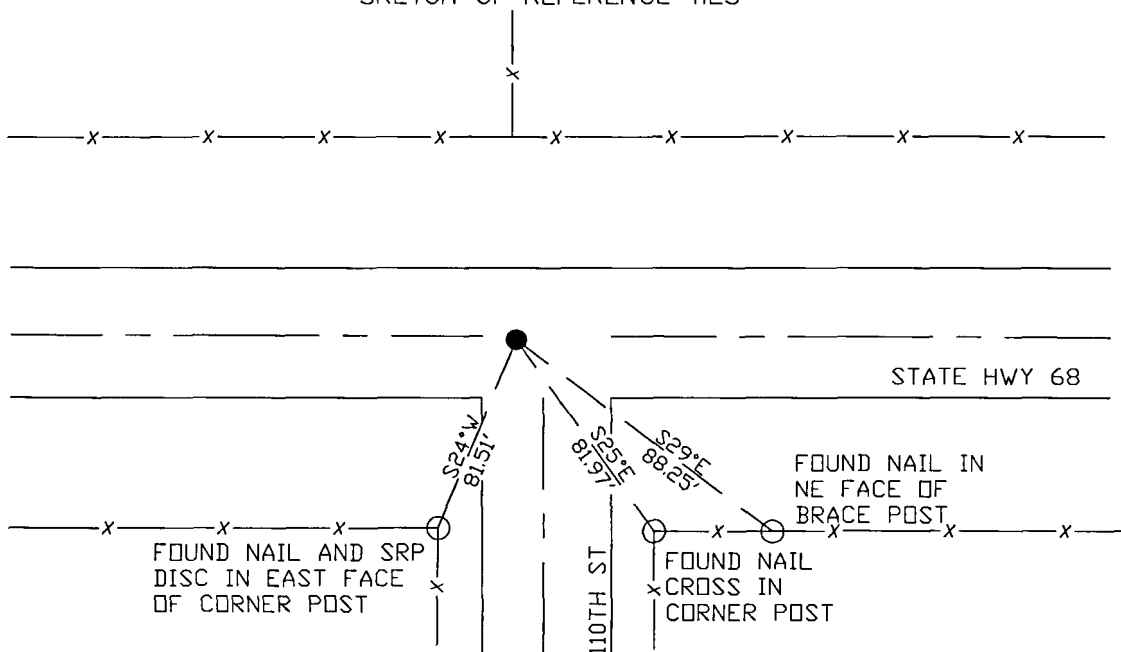
At the corner location shown on the sketch:

On 10/27/17 found a PK nail with 3/4" pin below on east west centerline and on fence  
DATE line north.

left monument as found       lowered monument       removed monument (explain)

On \_\_\_\_\_ placed a \_\_\_\_\_  
DATE

SKETCH OF REFERENCE TIES



Statement of evidence for this corner location is on back of this page.

I hereby certify that this document was researched and prepared by me or under my direct supervision and that I am a licensed Land Surveyor under the laws of the State of Minnesota.

Signature *Jim [unclear]*

Date 3/26/18 License No. 45874

Title:

- Land Surveyor       Professional Engineer  
 County Surveyor       County Engineer

**Doc# 268238 Fee: \$0.00 2 Pages**

Property & Public Services  
 Property Records Division  
 Yellow Medicine County, Minnesota  
 I hereby certify that the within instrument was filed on April 5, 2018 at 3:15 PM

Janel Timm, Yellow Medicine County Recorder

By *Kelly Kauger* Deputy

STATEMENT OF EVIDENCE:

NORTHEAST OF SECTION 6, T114N, R46W, 5TH PM

*1871 Corner was originally established by the U.S. General Land Office as a post set in raised mound.*

*Undated Resurvey completed in which the Government was found and set top of monument 3" above ground.*

*1947 MNDT Highway Plans show the corner in place at centerline intersection E. W. & S. & on fence line north on P.l. 128+29.8 with the following ties:*

*G. Rail N 12.2*

*FP SW 50.4*

*Cor FP SE 48.4*

*2009 Roy Marihart completed a survey in section 5 which shows a found monument at the NW corner Section 5*

*2017-10-17 Westwood PS got coordinates from the County Highway Dept which show a PK nail in place at this corner location.*

*2017-10-27 Westwood PS found a PK nail with 3/4" pin below on east west centerline and on fence line north and found 3 reference ties from unknown source. Monument fit Highway Plans stationing and coordinate from County Highway Department. Accepting location as the corner.*