

CERTIFICATE OF LOCATION OF GOVERNMENT CORNER

NORTHEAST Corner of Section 5, Township 114 N, Range 46 W

5th Principal Meridian, State of Minnesota, County of Yellow Medicine.

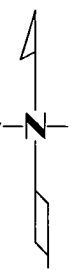
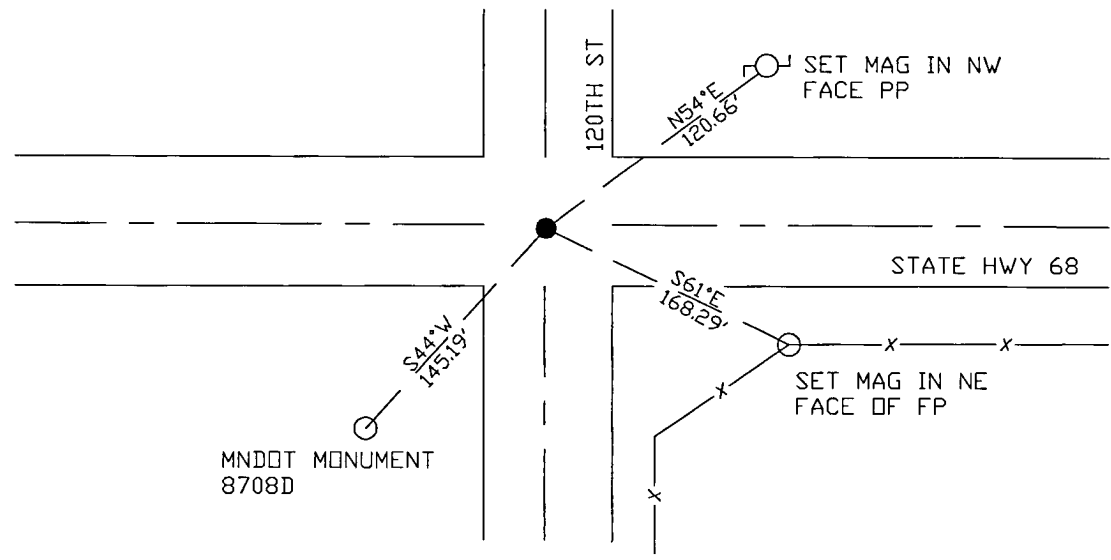
At the corner location shown on the sketch:

On 10/27/17 found a mag nail.
DATE

left monument as found lowered monument removed monument (explain)

On _____ placed a _____
DATE

SKETCH OF REFERENCE TIES



N.T.S.

Statement of evidence for this corner location is on back of this page.

I hereby certify that this document was researched and prepared by me or under my direct supervision and that I am a licensed Land Surveyor under the laws of the State of Minnesota.

Signature *Janel Timm*

Date 3/26/18 License No. 45874

Title:

- Land Surveyor Professional Engineer
- County Surveyor County Engineer

Doc# 268239 Fee: \$0.00 2 Pages

Property & Public Services
Property Records Division
Yellow Medicine County, Minnesota
I hereby certify that the within instrument was filed on April 5, 2018 at 3:20 PM

Janel Timm, Yellow Medicine County Recorder

By *Kelly Kueger* Deputy

STATEMENT OF EVIDENCE:

NORTHEAST OF SECTION 5, T114N, R46W, 5TH PM

1871 Corner was originally established by the U.S. General Land Office as a post set in raised mound.

Undated Resurvey completed in which a Stake in Government Mound was found and set top of monument level with ground.

1947 MNDT Highway Plans show a 6"x6" granite monument in place at intersection roads N/S/E/W and P.I. station 181+44.4 with the following reference ties:

Cor FP NW 59.45'

Cor FP SW 46.75'

PP SE 90.15'

2009 Roy Marihart completed a survey in section 5 which shows a found monument at the NE corner Section 5

2017-10-17 Westwood PS received coordinates for this corner from the County Highway Department in which shows a PK nail in place.

2017-10-27 Westwood PS found a Mag nail which fits highway stationing and coordinates from County Highway Dept. Accepting corner location and set 3 reference ties.