

CERTIFICATE OF LOCATION OF GOVERNMENT CORNER

NORTHEAST Corner of Section 33, Township 115N, Range 46W
 5th Principal Meridian, State of Minnesota, County of Yellow Medicine.

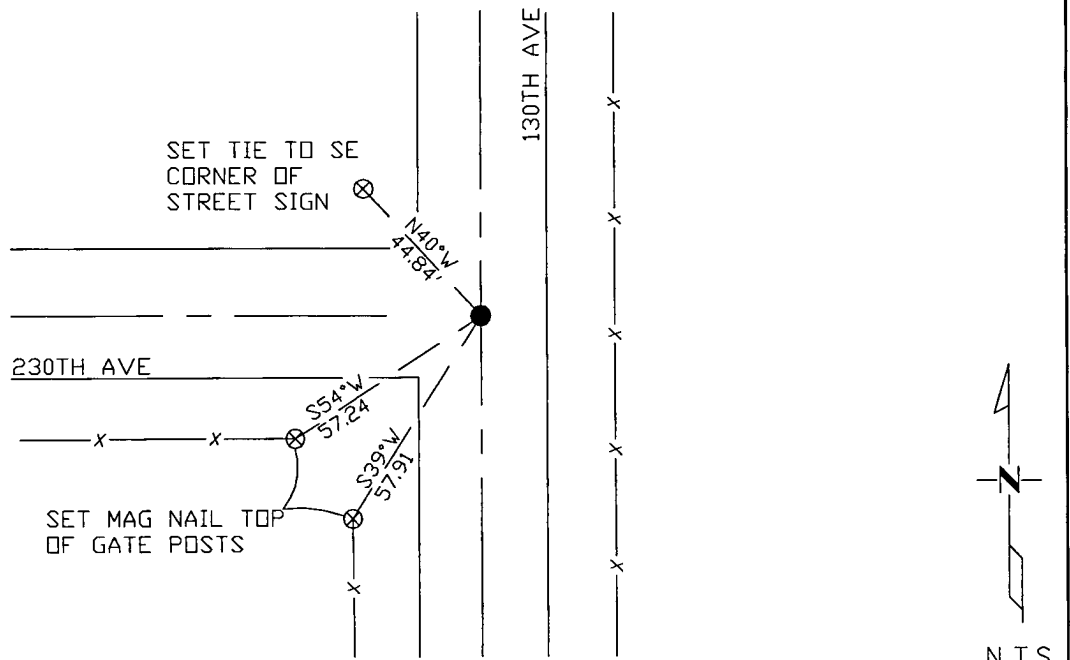
At the corner location shown on the sketch:

On 10/27/17 found a 1/2" rebar.
DATE

left monument as found lowered monument removed monument (explain)

On _____ placed a _____
DATE

SKETCH OF REFERENCE TIES



Statement of evidence for this corner location is on back of this page.

I hereby certify that this document was researched and prepared by me or under my direct supervision and that I am a licensed Land Surveyor under the laws of the State of Minnesota.

Signature *[Signature]*
 Date 3/26/18 License No. 45874

Title:

- Land Surveyor Professional Engineer
 County Surveyor County Engineer

Doc# 268247 Fee: \$0.00 2 Pages

Property & Public Services
 Property Records Division
 Yellow Medicine County, Minnesota
 I hereby certify that the within instrument was filed on April 6, 2018 at 9:45 AM

Janel Timm, Yellow Medicine County Recorder

By *[Signature]* Deputy

STATEMENT OF EVIDENCE:

NORTHEAST OF SECTION 33, T115N, R46W, 5TH PM

1871 Corner was originally established by the U.S. General Land Office as a post set in raised mound.

Undated Resurvey completed in which a Government stake and mound were found and set top of monument 3" above ground.

2017-10-17 Westwood PS received coordinates for this corner location from the County Highway Department.

2017-10-27 Westwood PS searched the area and found a 1/2" rebar near the road centerline intersection, which matches coordinates from the County Highway Department. Accepting as corner location and set 3 reference ties.