

# CERTIFICATE OF LOCATION OF GOVERNMENT CORNER

       NORTHEAST        Corner of Section        29       , Township        115N       , Range        46W         
 5th Principal Meridian, State of Minnesota, County of Yellow Medicine.

At the corner location shown on the sketch:

- On 10/27/17 found a 1/2" REBAR WITH CAP MARKED LS 19092  
DATE

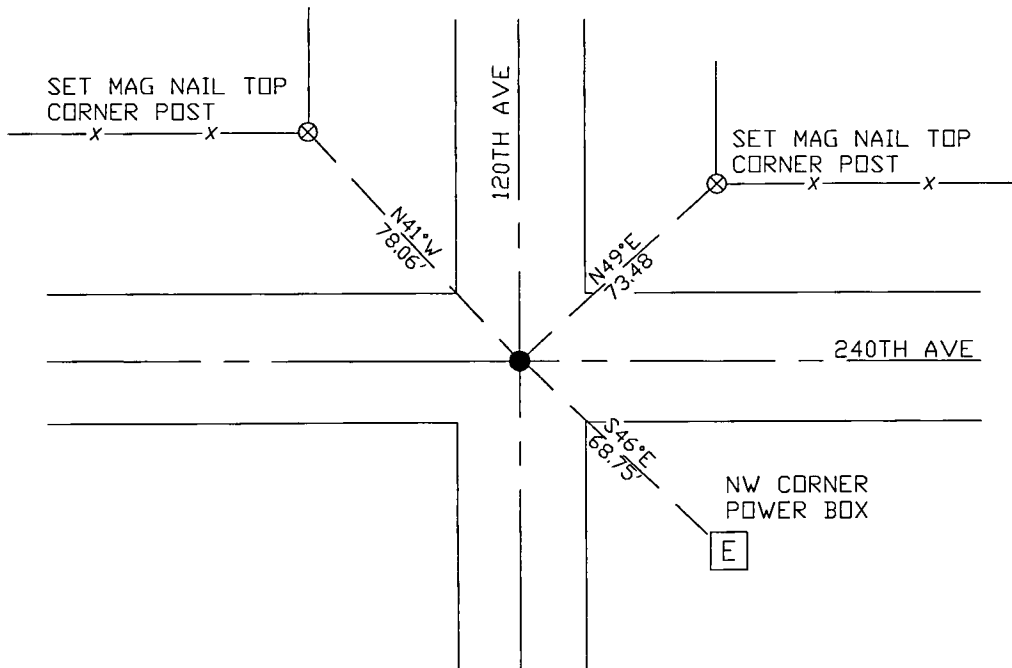
---

- left monument as found       lowered monument       removed monument (explain)

---

- On                      placed a                       
DATE

SKETCH OF REFERENCE TIES



Statement of evidence for this corner location is on back of this page.

I hereby certify that this document was researched and prepared by me or under my direct supervision and that I am a licensed Land Surveyor under the laws of the State of Minnesota.

Signature *[Handwritten Signature]*  
 Date 3/26/18 License No. 45874

Title:

- Land Surveyor       Professional Engineer
- County Surveyor       County Engineer

**Doc# 268248 Fee: \$0.00 2 Pages**

Property & Public Services  
 Property Records Division  
 Yellow Medicine County, Minnesota  
 I hereby certify that the within instrument was filed on April 6, 2018 at 9:50 AM

Janel Timm, Yellow Medicine County Recorder

By *[Handwritten Signature]* Deputy

STATEMENT OF EVIDENCE:

NORTHEAST OF SECTION 29, T115N, R46W, 5TH PM

*1871 Corner was originally established by the U.S. General Land Office as a post set in raised mound.*

*Undated Resurvey completed in which a Government stake in pile of stones was found and set top of monument 3" above ground.*

*2014 Bueltel-Moseng Land Surveying completed a survey in Section 29 in which they found a RLS #19092 in place at the corner location.*

*2017-10-17 Westwood PS received coordinates for this corner location from the County Highway Department.*

*2017-10-27 Westwood PS searched the area and found a 1/2" rebar with cap LS19092 which fits the 2014 Bueltel-Moseng survey in Section 29, and the coordinates from the County Highway Department. Accepting as corner location and set 3 reference ties.*