

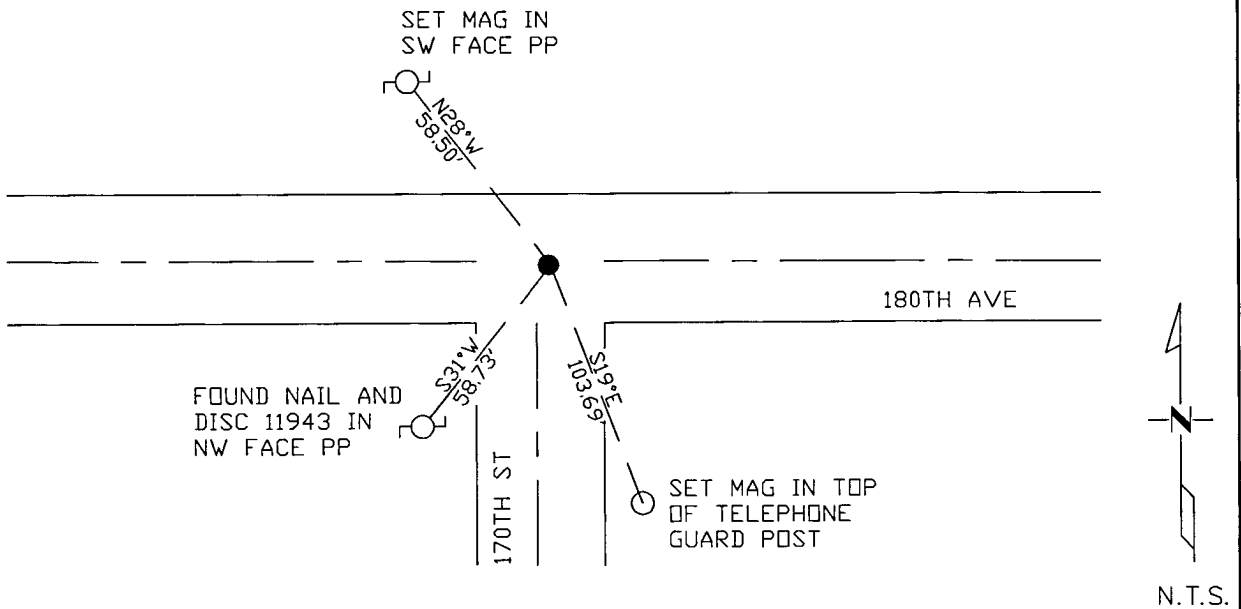
# CERTIFICATE OF LOCATION OF GOVERNMENT CORNER

       NORTHEAST Corner of Section        30 , Township        114 N , Range        45 W  
 5th Principal Meridian, State of Minnesota, County of Yellow Medicine.

At the corner location shown on the sketch:

- On 10/25/17 found a Survey Marker Spike per 2006 corner record.  
DATE
- left monument as found       lowered monument       removed monument (explain)
- On                      placed a                       
DATE

### SKETCH OF REFERENCE TIES



Statement of evidence for this corner location is on back of this page.

I hereby certify that this document was researched and prepared by me or under my direct supervision and that I am a licensed Land Surveyor under the laws of the State of Minnesota.

Signature *Jim Ross*  
 Date 3/26/18 License No. 45874

Title:

- Land Surveyor       Professional Engineer
- County Surveyor       County Engineer

**Doc# 268254 Fee: \$0.00 2 Pages**

Property & Public Services  
 Property Records Division  
 Yellow Medicine County, Minnesota  
 I hereby certify that the within instrument was filed on April 6, 2018 at 10:20 AM

Janel Timm, Yellow Medicine County Recorder

By *Kelly Kueger* Deputy

STATEMENT OF EVIDENCE:

NORTHEAST OF SECTION 30, T114N, R45W, 5TH PM

*1871 Corner was originally established by the U.S. General Land Office as a post set in raised mound.*

*1902 Surveyors Record Book show a distance of 2639' to the E1/4 corner Section 30.*

*Undated Survey Record Book page 196 show corner located in centerline and on line with improvements north and south per testimony of adjacent landowners. Set Monument 2" above ground.*

*2006 Lyle Moseng filed a corner record, dated 1/16/2006, in with they set a 5/8" rerod with seal #11943 over found spikes and 1/2" square rerod.*

*2017-10-17 Westwood PS received coordinates from the County Highway Department which shows a RLS marker in place.*

*2017-10-25 Westwood PS found a Survey Marker Spike per 2006 corner record and found 1 tie. Monument agrees with coordinate from County Highway Department, accepting as corner location and set 2 reference ties.*