

CERTIFICATE OF LOCATION OF GOVERNMENT CORNER

NORTHEAST Corner of Section 4, Township 114 N, Range 46 W
 5th Principal Meridian, State of Minnesota, County of Yellow Medicine.

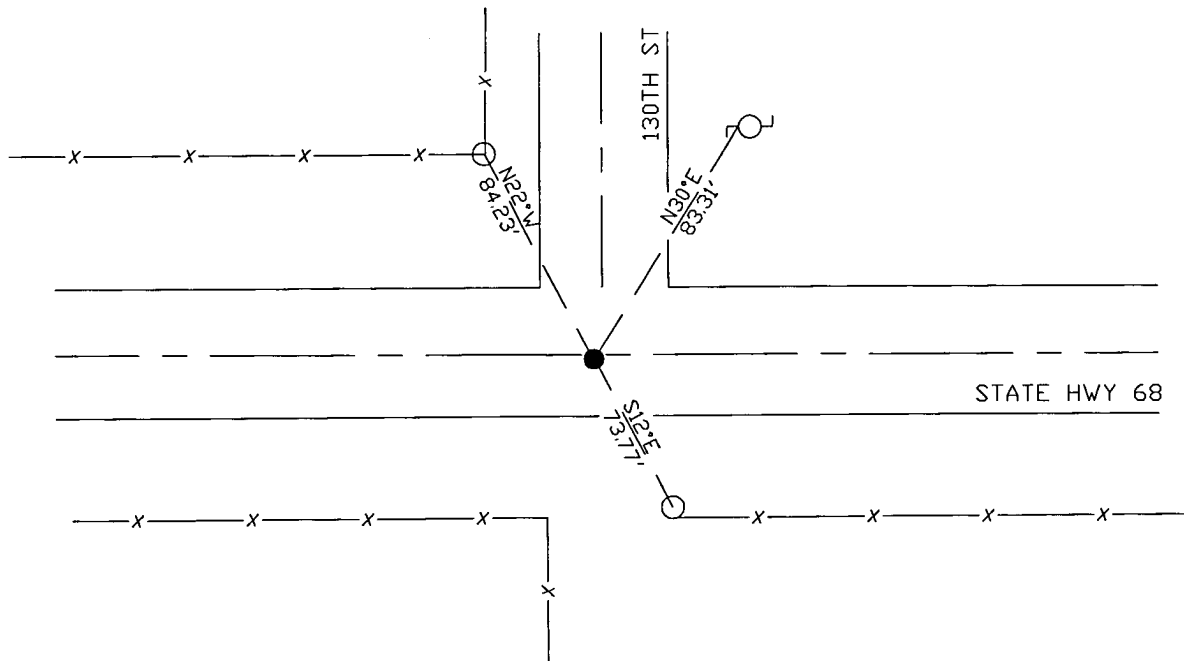
At the corner location shown on the sketch:

On 10/27/17 found a Survey Nail with wash LS 43844
DATE

left monument as found lowered monument removed monument (explain)

On _____ placed a _____
DATE

SKETCH OF REFERENCE TIES



Statement of evidence for this corner location is on back of this page.

I hereby certify that this document was researched and prepared by me or under my direct supervision and that I am a licensed Land Surveyor under the laws of the State of Minnesota.

Signature *Jessie J...*
 Date 3/26/18 License No. 45874

Title:

- Land Surveyor Professional Engineer
 County Surveyor County Engineer

Doc# 268258 Fee: \$0.00 2 Pages

Property & Public Services
 Property Records Division
 Yellow Medicine County, Minnesota
 I hereby certify that the within instrument was filed on April 6, 2018 at 10:45 AM

Janel Timm, Yellow Medicine County Recorder

By *Kelly K...* Deputy

STATEMENT OF EVIDENCE:

NORTHEAST OF SECTION 4, T114N, R46W, 5TH PM

1871 Corner was originally established by the U.S. General Land Office as a post set in raised mound.

Undated Resurvey completed in which a Government mound and pits were found and set top of monument level with ground.

1947 MNDT Highway Plans show a Granite Mon in place at intersection roads E/W/N at P.I. station 234+37.2 with the following ties:

PP WSW 41.5'

Cor FP NW 51.25'

Cor FP SW 41.5'

2017-10-17 Westwood PS received coordinates from the County Highway Department in which shows a nail in place 3" deep.

2017-10-27 Westwood PS found a Survey Nail with washer LS 43844 and 2 ties. Monument fits Highway Plans and coordinate from County Highway Dept, accepting as corner location and set 3 reference ties.