

# CERTIFICATE OF LOCATION OF GOVERNMENT CORNER

NORTHEAST Corner of Section 36, Township 114 N, Range 46 W

5th Principal Meridian, State of Minnesota, County of Yellow Medicine.

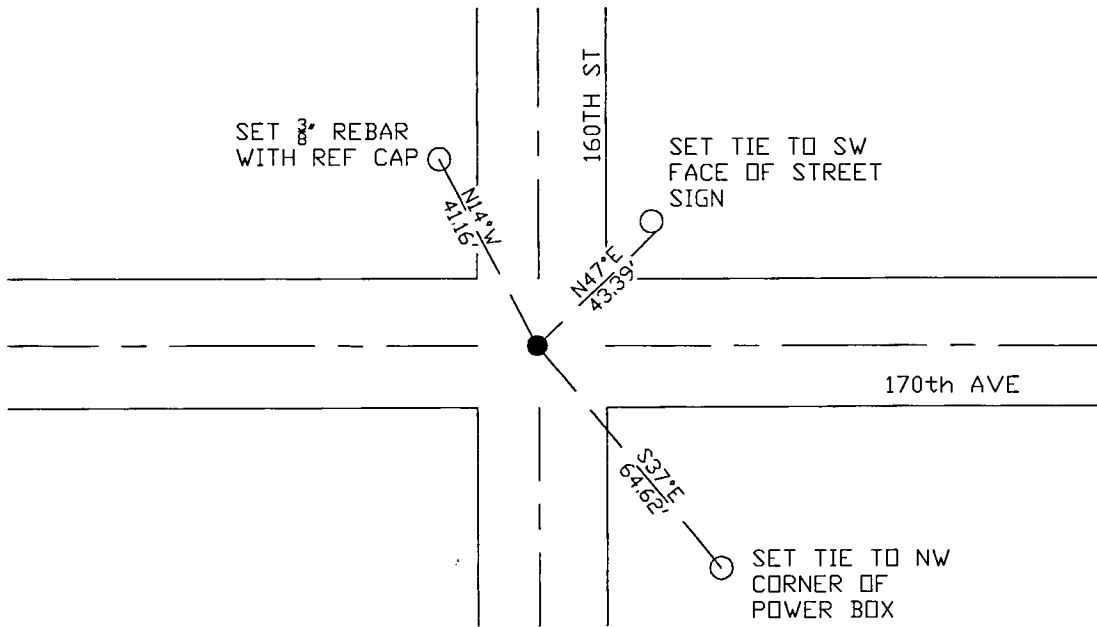
At the corner location shown on the sketch:

On 10/25/17 found a 1/2" rebar.  
DATE

left monument as found       lowered monument       removed monument (explain)

On \_\_\_\_\_ placed a \_\_\_\_\_  
DATE

SKETCH OF REFERENCE TIES



N  
 ↑  
 N  
 ↓  
 N.T.S.

Statement of evidence for this corner location is on back of this page.

I hereby certify that this document was researched and prepared by me or under my direct supervision and that I am a licensed Land Surveyor under the laws of the State of Minnesota.

Signature *Janel Timm*  
 Date 3/26/18 License No. 45874

Title:

- Land Surveyor       Professional Engineer  
 County Surveyor       County Engineer

**Doc# 268260 Fee: \$0.00 2 Pages**

Property & Public Services  
 Property Records Division  
 Yellow Medicine County, Minnesota  
 I hereby certify that the within instrument was filed on April 6, 2018 at 10:55 AM

Janel Timm, Yellow Medicine County Recorder

By *Kelly Kueger* Deputy

STATEMENT OF EVIDENCE:

NORTHEAST OF SECTION 36, T114N, R46W, 5TH PM

*1858 Corner was originally established by the U.S. General Land Office as a post set in raised mound.*

*Undated Resurvey in Record Book page 43 shows a distance of 5288' feet along east line of Section 36, and a distance of 5288' along the east line of Section 25. Record Book page 199 shows corner located on line and at equal distances between the Northeast corner Section 25 and Southeast corner Section 36. Set Monument 2" above ground.*

*2014 Roy Marihart, LS 19092, completed a survey for Section 36 in which shows a found monument at this location. Measured 2639.26 to the East Quarter and 2713.44 to the North Quarter of said Section.*

*2017-10-17 Westwood PS received coordinates from the County Highway Department for this corner location.*

*2017-10-25 Westwood Professional Services found a 1/2" rebar which fits the 2014 Marihart Survey for Section 36, and matches the coordinates from the County Highway Department. Measured 5278.3 to the SE-36 and 5291.4 to NE-25. Accepting location and set 3 reference ties.*