

CERTIFICATE OF LOCATION OF GOVERNMENT CORNER

NORTHEAST Corner of Section 35, Township 114 N, Range 46 W

5th Principal Meridian, State of Minnesota, County of Yellow Medicine.

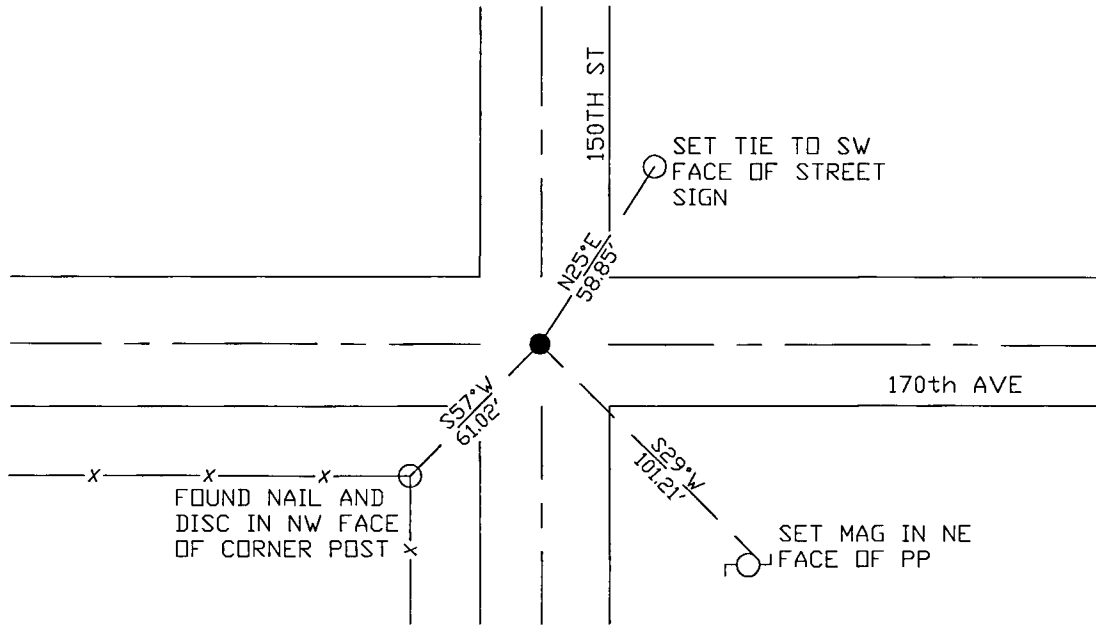
At the corner location shown on the sketch:

On 10/25/17 found a 1/2" open pipe.
DATE

left monument as found lowered monument removed monument (explain)

On _____ placed a _____
DATE

SKETCH OF REFERENCE TIES



N.T.S.

Statement of evidence for this corner location is on back of this page.

I hereby certify that this document was researched and prepared by me or under my direct supervision and that I am a licensed Land Surveyor under the laws of the State of Minnesota.

Signature *Janel Timm*

Date 3/26/18 License No. 45874

Title:

- Land Surveyor Professional Engineer
 County Surveyor County Engineer

Doc# 268261 Fee: \$0.00 2 Pages

Property & Public Services
 Property Records Division
 Yellow Medicine County, Minnesota
 I hereby certify that the within instrument was filed on April 6, 2018 at 11:00 AM

Janel Timm, Yellow Medicine County Recorder

By *Kelly Kauger* Deputy

STATEMENT OF EVIDENCE:

NORTHEAST OF SECTION 35, T114N, R46W, 5TH PM

1871 Corner was originally established by the U.S. General Land Office as a post set in raised mound.

1909 John Norgaard, County Surveyor, completed a survey in Section 35, Surveyors Record Book page 196, in which he found the stone monument (shows a measurement of 5262' for the north line of the section).

2014 Roy Marihart completed a survey in Section 36 in which he found the NW corner. Measured 2623.33' to the West Quarter and 2617.41' to the North Quarter of said section.

2017-10-17 Westwood PS received coordinates from the County Highway Department for this corner location.

2017-10-25 Westwood PS searched the area and found a 1/2" open pipe and 1 reference tie which fits the distance from the 1909 survey of Section 35, and also fits the position indicated by the 2014 survey. Monument matches the coordinates from the County Highway Department. Accepting monument as the corner location and set 2 reference ties.