

CERTIFICATE OF LOCATION OF GOVERNMENT CORNER

NORTHEAST Corner of Section 34, Township 114 N, Range 46 W

5th Principal Meridian, State of Minnesota, County of Yellow Medicine.

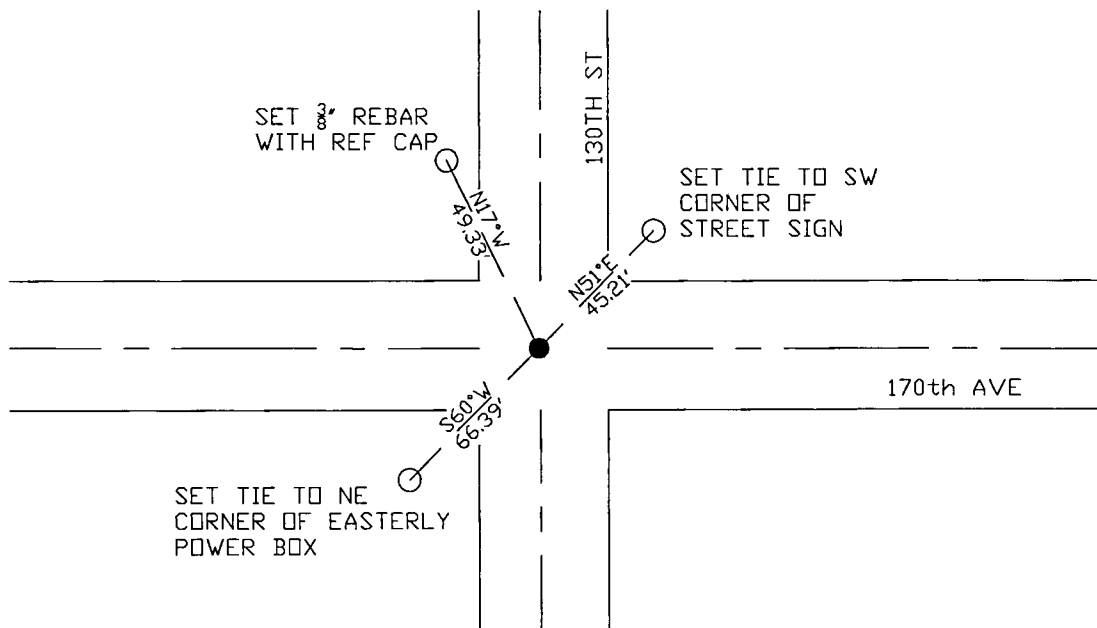
At the corner location shown on the sketch:

On 10/25/17 found a DNR SURVEY MARKER Aluminum cap.
DATE

left monument as found lowered monument removed monument (explain)

On _____ placed a _____
DATE

SKETCH OF REFERENCE TIES



N.T.S.

Statement of evidence for this corner location is on back of this page.

I hereby certify that this document was researched and prepared by me or under my direct supervision and that I am a licensed Land Surveyor under the laws of the State of Minnesota.

Signature *[Handwritten Signature]*

Date 3/26/18 License No. 45874

Title:

- Land Surveyor Professional Engineer
 County Surveyor County Engineer

Doc# 268262 Fee: \$0.00 2 Pages

Property & Public Services
 Property Records Division
 Yellow Medicine County, Minnesota
 I hereby certify that the within instrument was filed on April 6, 2018 at 11:05 AM

Janel Timm, Yellow Medicine County Recorder

By *[Handwritten Signature]* Deputy

STATEMENT OF EVIDENCE:

NORTHEAST OF SECTION 34, T114N, R46W, 5TH PM

1871 Corner was originally established by the U.S. General Land Office as a post set in raised mound.

1901 John Norgaard, County Surveyor, completed a survey, Surveyors Record Book B, in which a stone was found in the government mound and a 6x6 jasper granite monument was set to mark the corner.

1909 John Norgaard, County Surveyor, completed a survey in Section 34, Surveyors Record Book page 198, in which he found the stone monument, also mentioned on page 196.

Undated Section Corner Tie Book page 4 shows monument at corner location with ties as follows:

third fence post SE 76.5'

first fence post NE 80.5'

hub, NW 84.4'

2001 MN DNR completed a survey for Sections 33 and 34 in which they set a DNR SURVEY MARKER over a found stone monument at the corner location, and filed a corner record dated 06/04/01.

N: 138222.444

E: 375386.325

2017-10-17 Westwood PS received coordinates from the County Highway Department for this corner location.

2017-10-25 Westwood PS searched the area and found a DNR SURVEY MARKER Aluminum cap which agrees with 2001 DNR corner record. Monument matches coordinates from the County Highway Department. Accepting monument as the corner location and set 3 reference ties.