

CERTIFICATE OF LOCATION OF GOVERNMENT CORNER

NORTHEAST Corner of Section 31, Township 114 N, Range 46 W

5th Principal Meridian, State of Minnesota, County of Yellow Medicine.

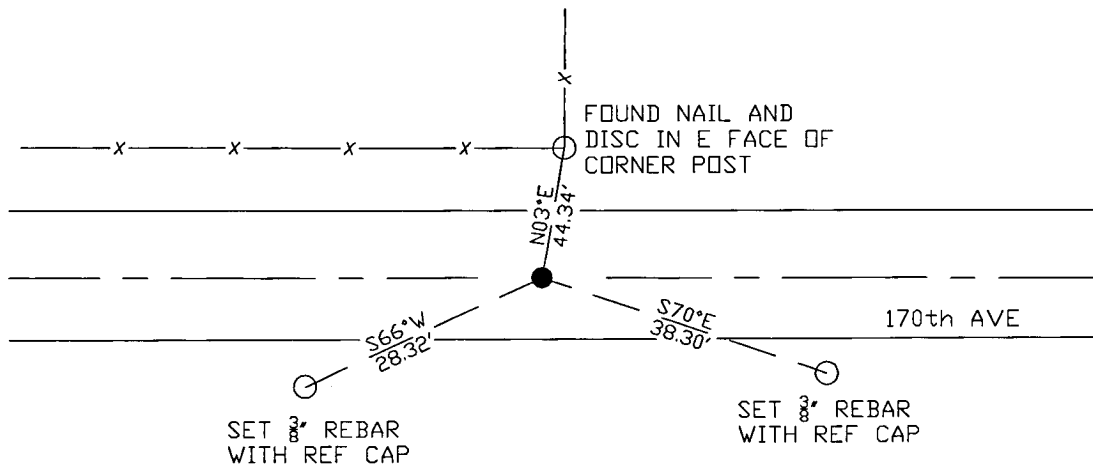
At the corner location shown on the sketch:

On 10/25/17 found a 3/4" iron rod.
DATE

left monument as found lowered monument removed monument (explain)

On _____ placed a _____
DATE

SKETCH OF REFERENCE TIES



N.T.S.

Statement of evidence for this corner location is on back of this page.

I hereby certify that this document was researched and prepared by me or under my direct supervision and that I am a licensed Land Surveyor under the laws of the State of Minnesota.

Signature *Janel Timm*
 Date 3/26/18 License No. 45874

Title:

- Land Surveyor Professional Engineer
 County Surveyor County Engineer

Doc# 268265 Fee: \$0.00 2 Pages

Property & Public Services
 Property Records Division
 Yellow Medicine County, Minnesota
 I hereby certify that the within instrument was filed on April 6, 2018 at 12:05 PM

Janel Timm, Yellow Medicine County Recorder

By *Kelly Kauger* Deputy

STATEMENT OF EVIDENCE:

NORTHEAST OF SECTION 31, T114N, R46W, 5TH PM

1871 Corner was originally established by the U.S. General Land Office as a post set in raised mound.

1978 Gary Stevenson filed a corner record dated 10/20/1978 in which a 7"x7" granite block was found down 4.5 feet and placed a 3/4" iron rod on east side of granite block and also set 3/4" iron rod over center of found granite block.

2017-10-17 Westwood PS received coordinates for this corner from the County Highway Department.

2017-10-25 Westwood PS searched the area and found a 3/4" iron rod per 1978 corner record by Gary Stevenson, and 1 reference tie. Monument fits coordinates from County Highway Department, accepting as corner location and set 2 additional reference.