

CERTIFICATE OF LOCATION OF GOVERNMENT CORNER

 NORTHEAST Corner of Section 30 , Township 114 N , Range 46 W

5th Principal Meridian, State of Minnesota, County of Yellow Medicine.

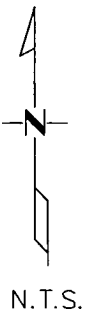
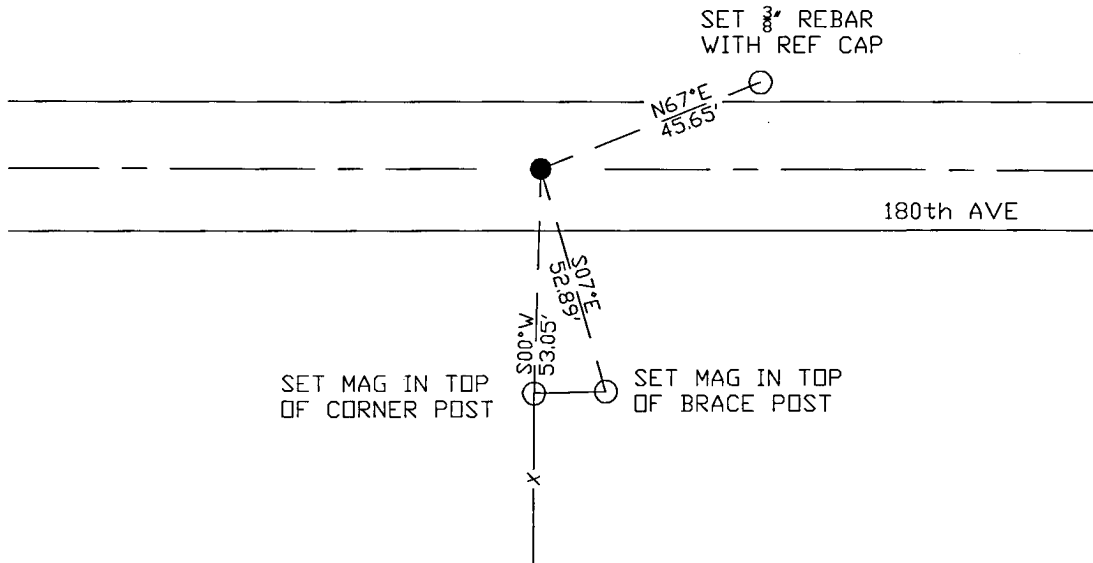
At the corner location shown on the sketch:

On 10/25/17 found a Survey marker nail.
DATE

left monument as found lowered monument removed monument (explain)

On placed a
DATE

SKETCH OF REFERENCE TIES



Statement of evidence for this corner location is on back of this page.

I hereby certify that this document was researched and prepared by me or under my direct supervision and that I am a licensed Land Surveyor under the laws of the State of Minnesota.

Signature *[Handwritten Signature]*

Date 3/26/18 License No. 45874

Title:

- Land Surveyor Professional Engineer
 County Surveyor County Engineer

Doc# 268266 Fee: \$0.00 2 Pages

Property & Public Services
 Property Records Division
 Yellow Medicine County, Minnesota

I hereby certify that the within instrument was filed on April 6, 2018 at 12:10 PM

Janel Timm, Yellow Medicine County Recorder

By *[Handwritten Signature]* Deputy

STATEMENT OF EVIDENCE:

NORTHEAST OF SECTION 30, T114N, R46W, 5TH PM

1871 Corner was originally established by the U.S. General Land Office as a post set in raised mound.

2008 Roy Marihart completed a survey for Sections 19+20 in which he found a monument at the SW corner Section 20.

2017-10-17 Westwood PS received coordinates for this corner location from the County Highway Department.

2017-10-25 Westwood PS searched the area and found SURVEY MARKER NAIL which fits the 2008 survey by Roy Marihart, and agrees with coordinates from the County Highway Department. Accepting as the corner location and set 3 reference ties.