

# CERTIFICATE OF LOCATION OF GOVERNMENT CORNER

NORTHEAST Corner of Section 28, Township 114 N, Range 46 W

5th Principal Meridian, State of Minnesota, County of Yellow Medicine.

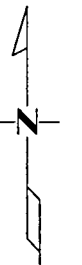
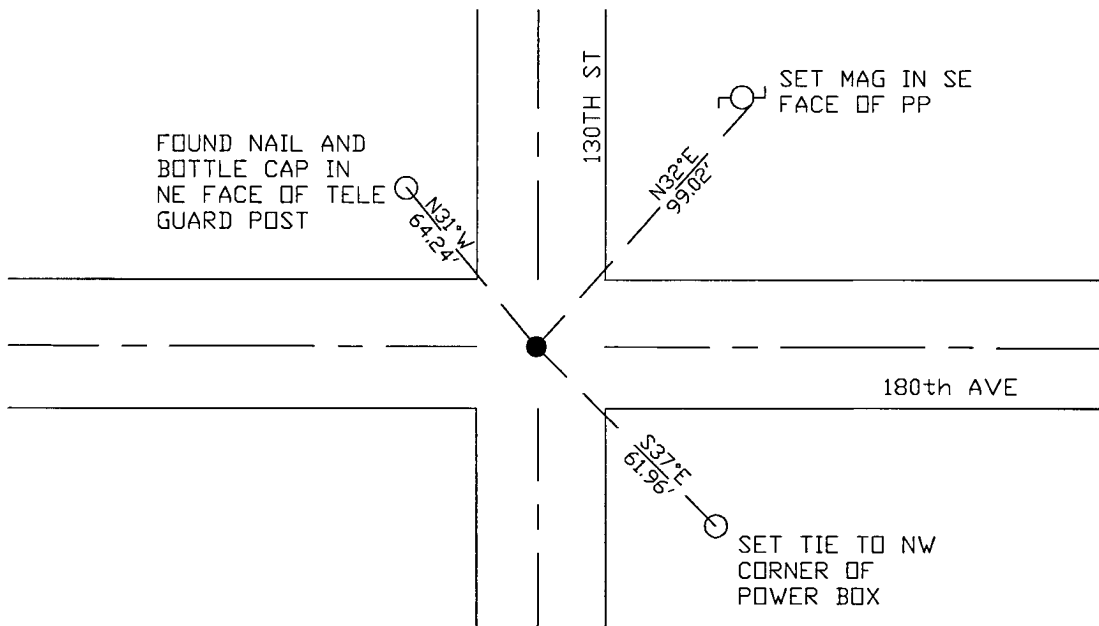
At the corner location shown on the sketch:

On 10/25/17 found a Survey Marker Nail.  
DATE

left monument as found       lowered monument       removed monument (explain)

On            placed a             
DATE

### SKETCH OF REFERENCE TIES



N.T.S.

Statement of evidence for this corner location is on back of this page.

I hereby certify that this document was researched and prepared by me or under my direct supervision and that I am a licensed Land Surveyor under the laws of the State of Minnesota.

Signature *Jane Timm*

Date 3/26/18 License No. 45874

Title:

- Land Surveyor       Professional Engineer  
 County Surveyor       County Engineer

**Doc# 268268 Fee: \$0.00 2 Pages**

Property & Public Services  
 Property Records Division  
 Yellow Medicine County, Minnesota  
 I hereby certify that the within instrument was filed on April 6, 2018 at 12:20 PM

Janel Timm, Yellow Medicine County Recorder

By *Kelly Kauger* Deputy

STATEMENT OF EVIDENCE:

NORTHEAST OF SECTION 28, T114N, R46W, 5TH PM

*1871 Corner was originally established by the U.S. General Land Office as a post set in raised mound.*

*Undated Surveyors Record Book page 457 has ties as follows:*

*2nd FP SSE 74'*

*2nd FP SSW 75'*

*Undated township resurvey – found stone in government mound*

*2017–10–17 Westwood PS received coordinates for this corner location from the County Highway Department.*

*2017–10–25 Westwood PS searched the area and found a SURVEY MARKER NAIL at centerline intersection of bituminous road and found 1 reference tie. Monument agrees with coordinates from the County Highway Department. Accepting monument as the corner location and set 2 reference ties.*