

CERTIFICATE OF LOCATION OF GOVERNMENT CORNER

NORTHEAST Corner of Section 27, Township 114 N, Range 46 W

5th Principal Meridian, State of Minnesota, County of Yellow Medicine.

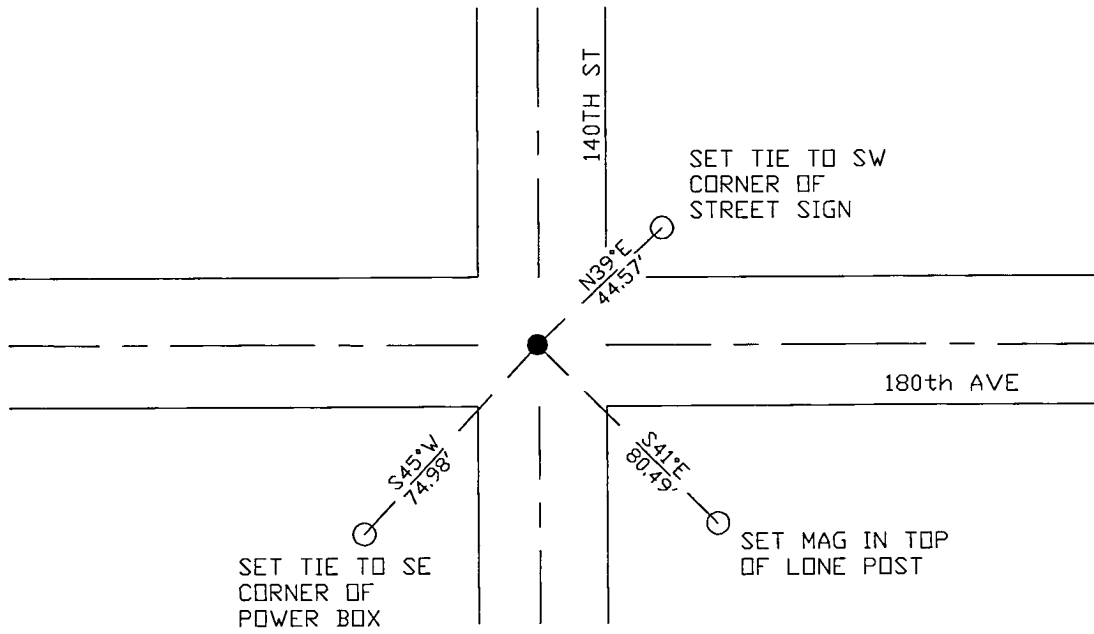
At the corner location shown on the sketch:

On 10/25/17 found a Survey Marker Nail
DATE

left monument as found lowered monument removed monument (explain)

On placed a
DATE

SKETCH OF REFERENCE TIES



N.T.S.

Statement of evidence for this corner location is on back of this page.

I hereby certify that this document was researched and prepared by me or under my direct supervision and that I am a licensed Land Surveyor under the laws of the State of Minnesota.

Signature *Jm [unclear]*
 Date 3/26/18 License No. 45874

Title:

- Land Surveyor Professional Engineer
 County Surveyor County Engineer

Doc# 268269 Fee: \$0.00 2 Pages

Property & Public Services
 Property Records Division
 Yellow Medicine County, Minnesota
 I hereby certify that the within instrument was filed on April 6, 2018 at 12:25 PM

Janel Timm, Yellow Medicine County Recorder

By *Kelly Kauger* Deputy

STATEMENT OF EVIDENCE:

NORTHEAST OF SECTION 27, T114N, R46W, 5TH PM

1871 Corner was originally established by the U.S. General Land Office as a post set in raised mound.

*Undated Surveyors Record Book page 457 has ties as follows:
Cottonwood 15" NNW 51.2'
Te Pole SE 44.9'*

Undated township resurvey – found stone in government mound

2017-10-17 Westwood PS received coordinates for this corner location from the County Highway Department.

2017-10-25 Westwood PS searched the area and found a SURVEY MARKER NAIL at centerline intersection of bituminous road, which agrees with coordinates from the County Highway Department. Accepting as corner location as set 3 reference ties.