

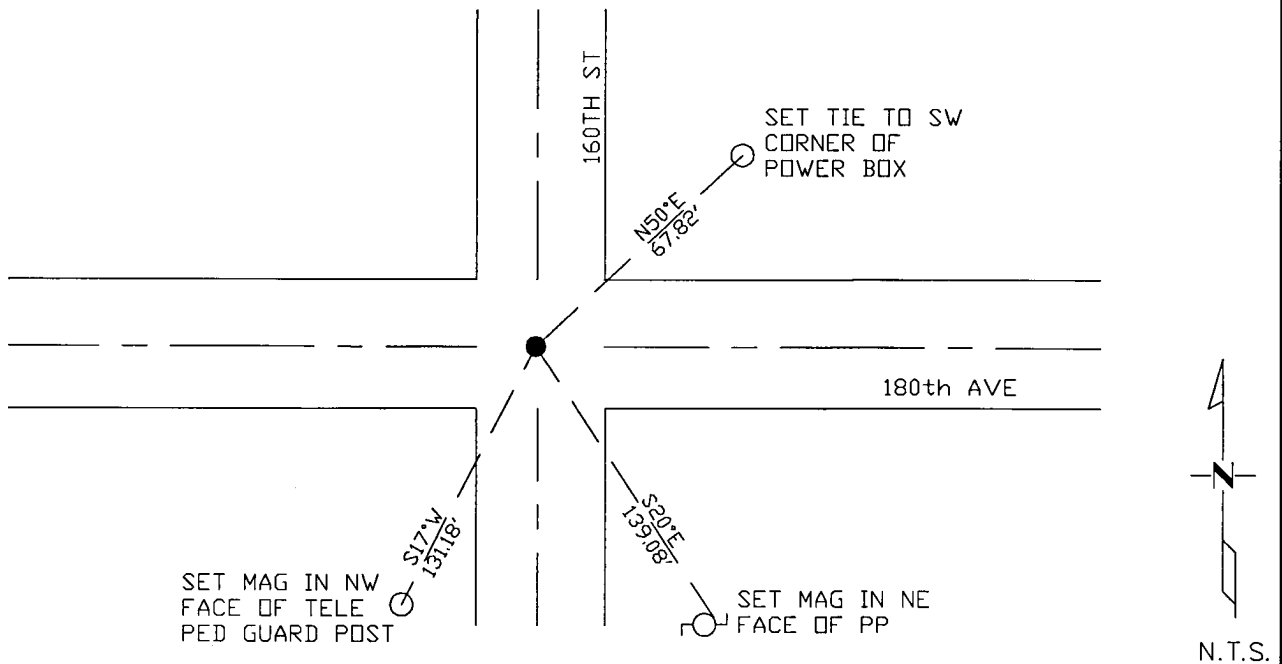
CERTIFICATE OF LOCATION OF GOVERNMENT CORNER

 NORTHEAST Corner of Section 25 , Township 114 N , Range 46 W
 5th Principal Meridian, State of Minnesota, County of Yellow Medicine.

At the corner location shown on the sketch:

- On 10/25/17 found a Survey Marker Spike
DATE
- left monument as found lowered monument removed monument (explain)
- On placed a
DATE

SKETCH OF REFERENCE TIES



Statement of evidence for this corner location is on back of this page.

I hereby certify that this document was researched and prepared by me or under my direct supervision and that I am a licensed Land Surveyor under the laws of the State of Minnesota.

Signature *[Signature]*
 Date 3/26/18 License No. 45874

Title:

- Land Surveyor Professional Engineer
- County Surveyor County Engineer

Doc# 268271 Fee: \$0.00 2 Pages

Property & Public Services
 Property Records Division
 Yellow Medicine County, Minnesota
 I hereby certify that the within instrument
 was filed on April 6, 2018 at 12:35 PM

Janel Timm, Yellow Medicine County Recorder

By *[Signature]* Deputy

STATEMENT OF EVIDENCE:

NORTHEAST OF SECTION 25, T114N, R46W, 5TH PM

1858 Corner was originally established by the U.S. General Land Office as a post set in raised mound.

1896 Surveyors Record Book page 126 survey completed for Section 24 in which shows a Stone at corner location.

Undated township resurvey in Record Book page 43 shows a distance of 5288' feet along east line of Section 25, and 5290' along the east line of section 24. Record Book Page 191 shows a Found Stake in the Government Mound, Set top of Monument 4" above ground.

2006 Lyle Moseng filed a corner record dated, 1/16/2006 in which they set a 5/8" rebar with cap #11943 over a found pointed field stone and set 2 ties.

2017-10-17 Westwood PS received coordinates from the County Highway Department which shows a RLS monument in place.

2017-10-25 Westwood PS found a SURVEY MARKER SPIKE in bituminous road centerline which fits coordinate from County Highway Department. No reference ties were recovered from 2006 corner record, but it appears fit the location indicated. Measurements to section corners 1 mile north and south fit township resurvey within 3 ft. Accepting as corner location and set 3 ties.