

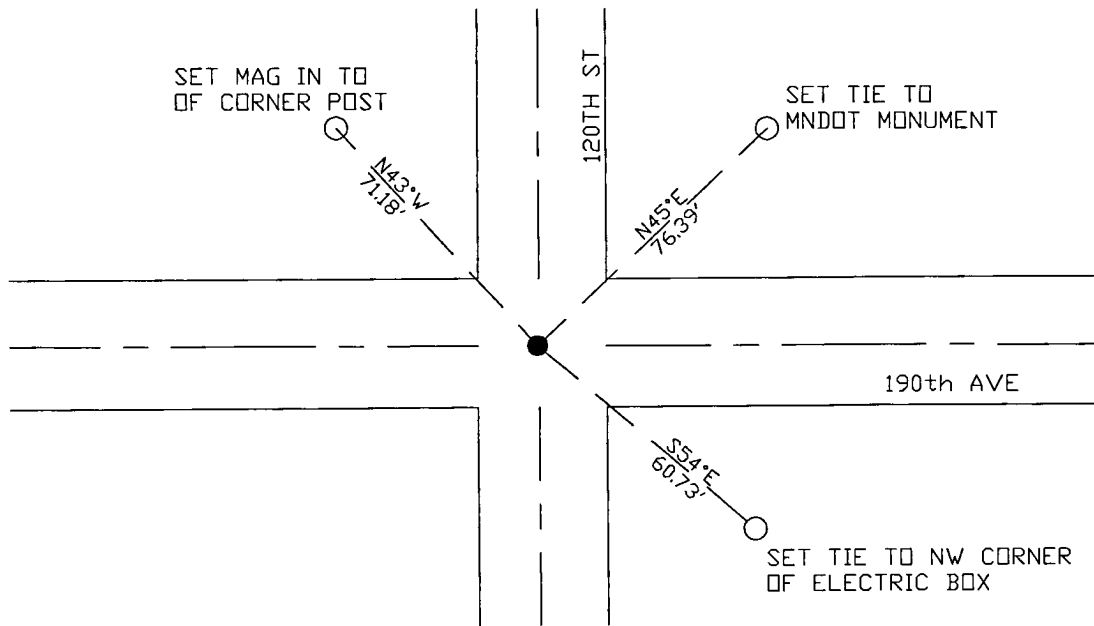
CERTIFICATE OF LOCATION OF GOVERNMENT CORNER

NORTHEAST Corner of Section 20, Township 114 N, Range 46 W
 5th Principal Meridian, State of Minnesota, County of Yellow Medicine.

At the corner location shown on the sketch:

- On 10/25/17 found a iron pipe with illegible cap.
DATE
- left monument as found lowered monument removed monument (explain)
- On _____ placed a _____
DATE

SKETCH OF REFERENCE TIES



N.T.S.

Statement of evidence for this corner location is on back of this page.

I hereby certify that this document was researched and prepared by me or under my direct supervision and that I am a licensed Land Surveyor under the laws of the State of Minnesota.

Signature *[Handwritten Signature]*
 Date 3/26/18 License No. 45874

Title:

- Land Surveyor Professional Engineer
- County Surveyor County Engineer

Doc# 268273 Fee: \$0.00 2 Pages

Property & Public Services
 Property Records Division
 Yellow Medicine County, Minnesota
 I hereby certify that the within instrument was filed on April 6, 2018 at 12:45 PM

Janel Timm, Yellow Medicine County Recorder

By *[Handwritten Signature]* Deputy

STATEMENT OF EVIDENCE:

NORTHEAST OF SECTION 20, T114N, R46W, 5TH PM

1871 Corner was originally established by the U.S. General Land Office as a post set in raised mound.

1930 Surveyors Record Book page 533, completed a survey for section 16 in which ties were set for the SW corner as follows:

Te-pole NW 42'

Te-line W 28'

Fence Cor NE 39'

Big Stone NE 44.5' and 41.5'

1965 MN Conservation Department completed a survey in which they set a RR spike at the SE corner Section 17.

2003 DNR completed a survey in which they set a mag nail over strong magnetic reading.

2008 Roy Marihart completed a survey for Sections 19+20 in which he found a monument at the NE corner Section 20.

2017-10-17 Westwood PS received coordinates for this corner location from the County Highway Department.

2017-10-25 Westwood PS searched the area and found a iron pipe with illegible cap, which fits with the coordinate from the County Highway Department and also fits position shown from 2008 survey. Accepting as the corner location and set reference ties.