

CERTIFICATE OF LOCATION OF GOVERNMENT CORNER

NORTHEAST Corner of Section 17, Township 114 N, Range 46 W

5th Principal Meridian, State of Minnesota, County of Yellow Medicine.

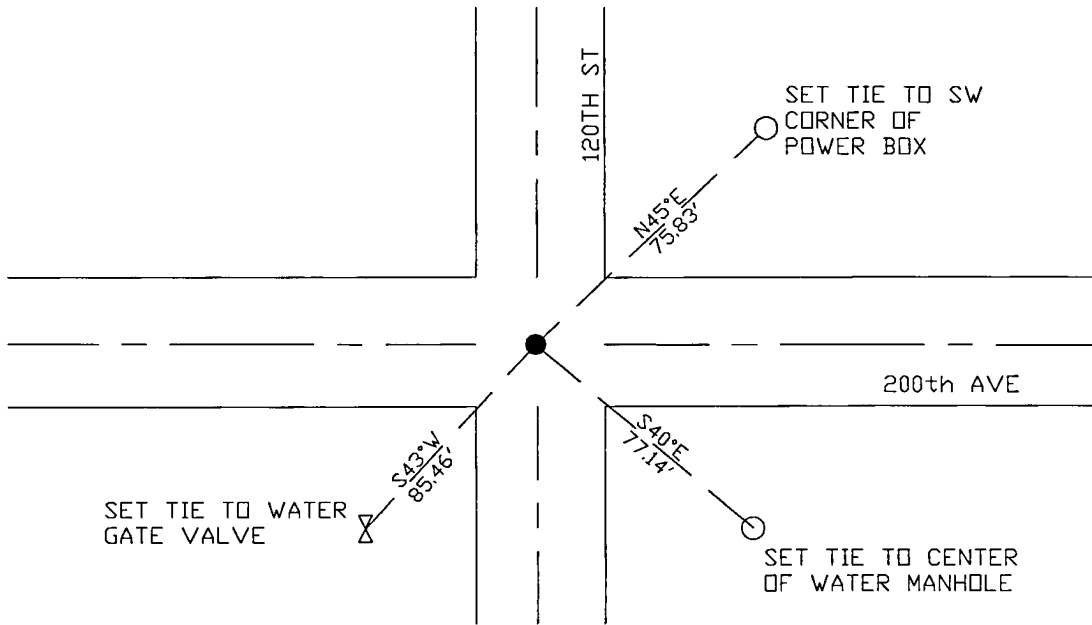
At the corner location shown on the sketch:

On 10/27/17 found a 1/2" rebar with illegible cap.
DATE

left monument as found lowered monument removed monument (explain)

On _____ placed a _____
DATE

SKETCH OF REFERENCE TIES



Statement of evidence for this corner location is on back of this page.

I hereby certify that this document was researched and prepared by me or under my direct supervision and that I am a licensed Land Surveyor under the laws of the State of Minnesota.

Signature *[Handwritten Signature]*

Date 3/26/18 License No. 45874

Title:

- Land Surveyor Professional Engineer
 County Surveyor County Engineer

Doc# 268275 Fee: \$0.00 2 Pages

Property & Public Services
 Property Records Division
 Yellow Medicine County, Minnesota
 I hereby certify that the within instrument was filed on April 6, 2018 at 12:55 PM

Janel Timm, Yellow Medicine County Recorder

By *[Handwritten Signature]* Deputy

STATEMENT OF EVIDENCE:

NORTHEAST OF SECTION 17, T114N, R46W, 5TH PM

1871 Corner was originally established by the U.S. General Land Office as a post set in raised mound.

1930 Surveyors Record Book page 533, completed a survey for section 16, noted a distance of 2640' to the N1/4 corner of sec 16 and 2645' to the W1/4 corner of sec 16. They set ties as follows:

Fence NE 47'

Tel pole SE 53'

1965 MN Conservation Department completed a survey in which they set a RR spike at the NE corner Section 17 and measured 5283.4' to the NW corner Section 17.

2017-10-17 Westwood PS received coordinates for this corner from the County Highway Department.

2017-10-27 Westwood PS searched the area and found a 1/2" rebar with illegible cap and 1.5 feet west of centerline intersection. Distances to adjacent section corners fit closely to 1930 survey and matches coordinates from the County Highway Department. Accepting as corner location and set 3 reference ties.