

# CERTIFICATE OF LOCATION OF GOVERNMENT CORNER

NORTHEAST Corner of Section 16, Township 114 N, Range 46 W  
 5th Principal Meridian, State of Minnesota, County of Yellow Medicine.

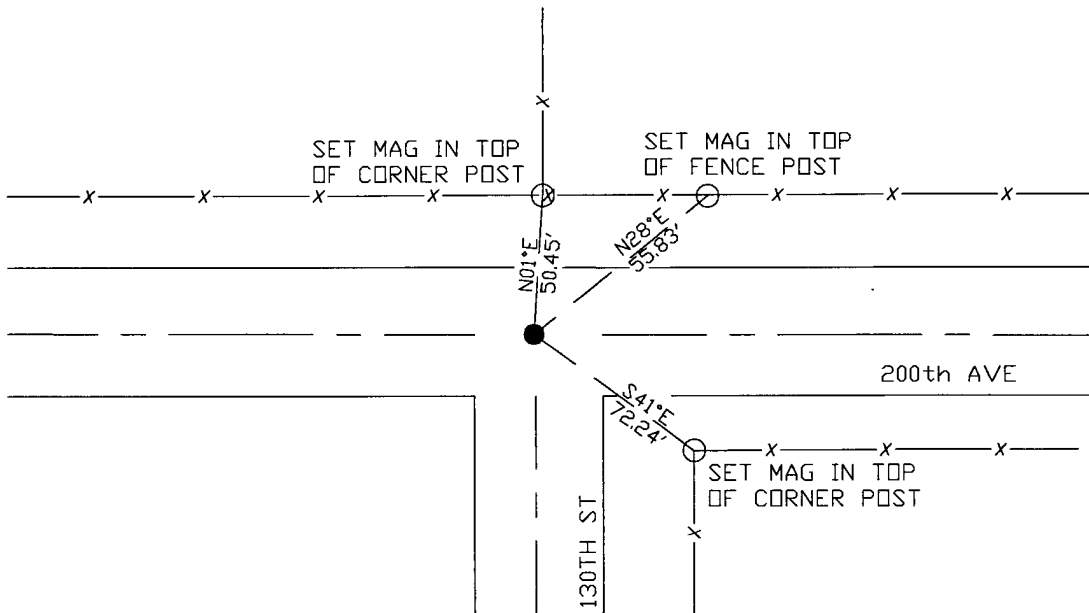
At the corner location shown on the sketch:

On 11/02/17 found a 12" spike that matches coordinates from County Highway  
DATE Department.

left monument as found       lowered monument       removed monument (explain)

On 11/02/17 placed a replaced spike with a 1/2" rebar with cap LS45874.  
DATE

SKETCH OF REFERENCE TIES



N  
 N.T.S.

Statement of evidence for this corner location is on back of this page.

I hereby certify that this document was researched and prepared by me or under my direct supervision and that I am a licensed Land Surveyor under the laws of the State of Minnesota.

Signature *[Handwritten Signature]*  
 Date 3/26/18 License No. 45874

Title:

- Land Surveyor       Professional Engineer  
 County Surveyor       County Engineer

**Doc# 268276 Fee: \$0.00 2 Pages**

Property & Public Services  
 Property Records Division  
 Yellow Medicine County, Minnesota  
 I hereby certify that the within instrument was filed on April 6, 2018 at 1:00 PM

Janel Timm, Yellow Medicine County Recorder

By *[Handwritten Signature]* Deputy

STATEMENT OF EVIDENCE:

NORTHEAST OF SECTION 16, T114N, R46W, 5TH PM

*1871 Corner was originally established by the U.S. General Land Office as a post set in raised mound.*

*1930 Surveyors Record Book page 533, completed a survey for section 16, notes a distance of 2640 to the N1/4 corner and 2641 to the E1/4 corner. They set ties as follows:*

*Fence Cor SE 47'*

*Te Line South 30'*

*2017-10-17 Westwood PS received coordinates for this corner location from the County Highway Department.*

*2017-11-02 Westwood PS searched the area and found a 12" spike that matches coordinates from the County Highway Department and falls near centerline intersection. Distances to the N1/4 corner and E1/4 corner fit closely to the 1930 survey. Accepting as corner location and replaced spike with 1/2" rebar with cap LS45874 and set 3 reference ties.*