

CERTIFICATE OF LOCATION OF GOVERNMENT CORNER

NORTHEAST Corner of Section 15, Township 114 N, Range 46 W

5th Principal Meridian, State of Minnesota, County of Yellow Medicine.

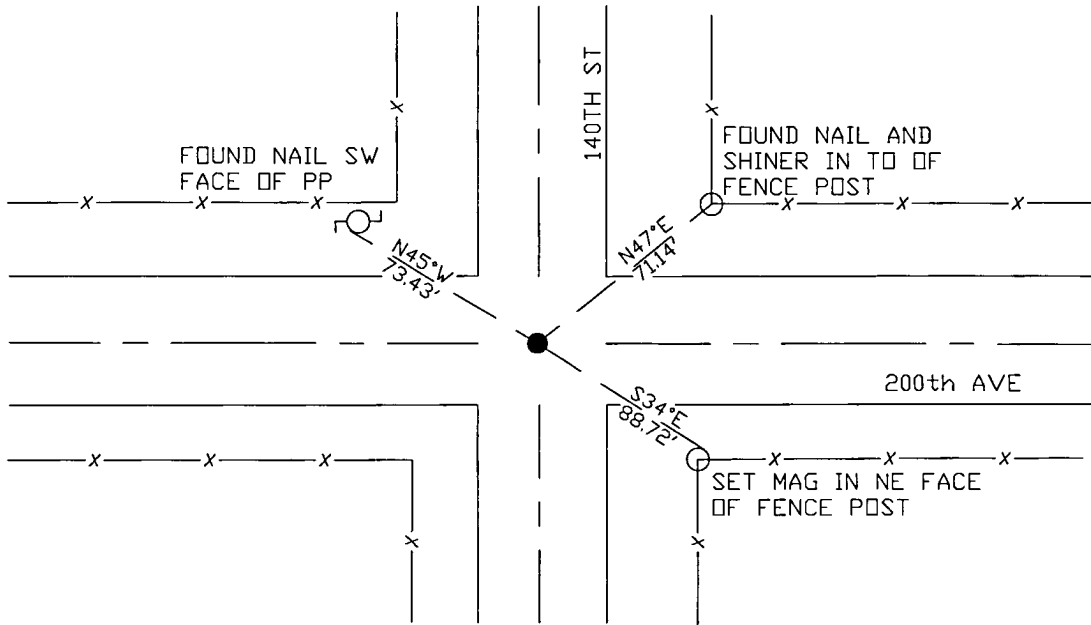
At the corner location shown on the sketch:

On 11/02/17 found a 12" spike and 2 reference ties of unknown origin, that matches
DATE coordinates from County Highway Department.

left monument as found lowered monument removed monument (explain)

On 11/02/17 placed a replaced spike with a 1/2" rebar with cap LS45874.
DATE

SKETCH OF REFERENCE TIES



N.T.S.

Statement of evidence for this corner location is on back of this page.

I hereby certify that this document was researched and prepared by me or under my direct supervision and that I am a licensed Land Surveyor under the laws of the State of Minnesota.

Signature *Janel Timm*
 Date 3/26/18 License No. 45874

Title:

- Land Surveyor Professional Engineer
 County Surveyor County Engineer

Doc# 268277 Fee: \$0.00 2 Pages

Property & Public Services
 Property Records Division
 Yellow Medicine County, Minnesota
 I hereby certify that the within instrument was filed on April 6, 2018 at 1:05 PM

Janel Timm, Yellow Medicine County Recorder

By *Kelly Kueger* Deputy

STATEMENT OF EVIDENCE:

NORTHEAST OF SECTION 15, T114N, R46W, 5TH PM

1871 Corner was originally established by the U.S. General Land Office as a post set in raised mound.

Undated township resurvey – found stone in government mound

2017-10-17 Westwood PS received coordinates for this corner location from the County Highway Department.

2017-11-02 Westwood PS searched the area and found a 12" spike and 2 reference ties of unknown origin. Spike matches coordinates from County Highway Department.

Accepting as corner location and replaced spike with a 1/2" rebar with cap LS45874 and set 1 additional reference tie.