

# CERTIFICATE OF LOCATION OF GOVERNMENT CORNER

NORTH QUARTER Corner of Section 4, Township 114 N, Range 46 W

5th Principal Meridian, State of Minnesota, County of Yellow Medicine.

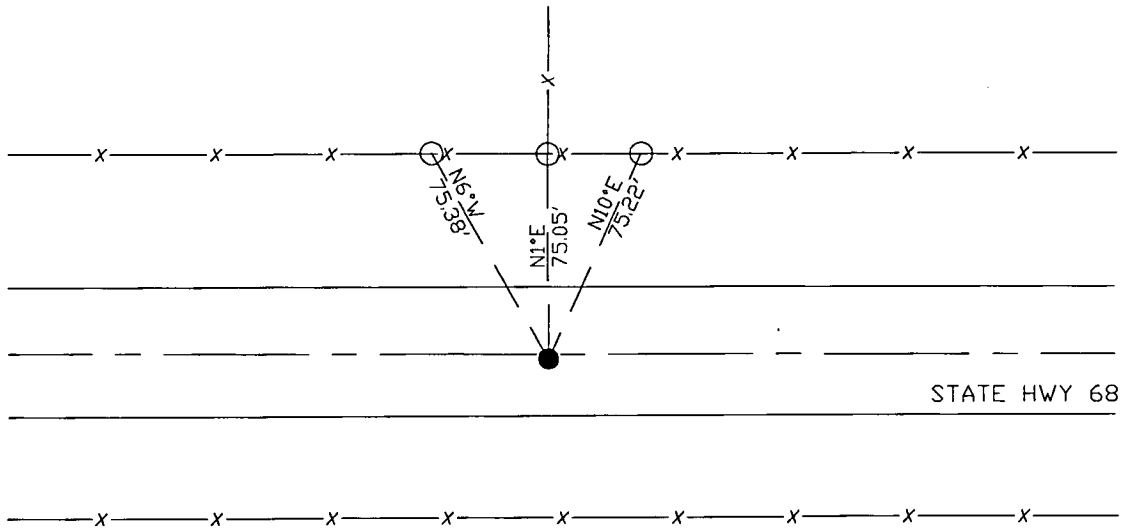
At the corner location shown on the sketch:

On 10/27/17 found a 1/2" rebar.  
DATE

left monument as found       lowered monument       removed monument (explain)

On \_\_\_\_\_ placed a \_\_\_\_\_  
DATE

### SKETCH OF REFERENCE TIES



N.T.S.

Statement of evidence for this corner location is on back of this page.

I hereby certify that this document was researched and prepared by me or under my direct supervision and that I am a licensed Land Surveyor under the laws of the State of Minnesota.

Signature *Jim [unclear]*

Date 3/26/18 License No. 45874

Title:

- Land Surveyor       Professional Engineer  
 County Surveyor       County Engineer

**Doc# 268285 Fee: \$0.00 2 Pages**

Property & Public Services  
 Property Records Division  
 Yellow Medicine County, Minnesota  
 I hereby certify that the within instrument was filed on April 6, 2018 at 1:45 PM

Janel Timm, Yellow Medicine County Recorder

By *Kelly Kauger* Deputy

STATEMENT OF EVIDENCE:

NORTH QUARTER OF SECTION 4, T114N, R46W, 5TH PM

*1871 Corner was originally established by the U.S. General Land Office as a post set in raised mound.*

*1947 MNDT Highway Plans show corner location at intersection E/W road and fence line N at POT staion 207+64.6 with the following reference ties:*

*FP SW 50.2'*

*FP S 38.2'*

*FP SE 52.8'*

*2017-10-27 Westwood PS found a 1/2" rebar. Found Rebar fits Highway Plans, accepting as corner location and set 3 reference ties.*