

CERTIFICATE OF LOCATION OF GOVERNMENT CORNER

NORTH QUARTER Corner of Section 3, Township 114 N, Range 46 W

5th Principal Meridian, State of Minnesota, County of Yellow Medicine.

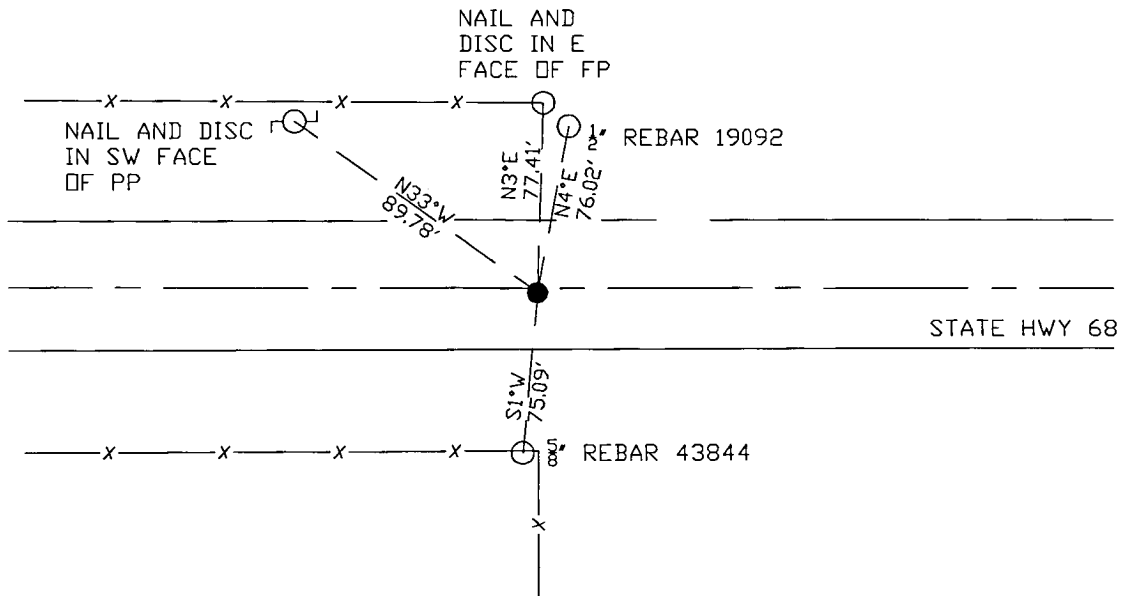
At the corner location shown on the sketch:

On 10/27/17 found a Mag nail.
DATE

left monument as found lowered monument removed monument (explain)

On _____ placed a _____
DATE

SKETCH OF REFERENCE TIES



N.T.S.

Statement of evidence for this corner location is on back of this page.

I hereby certify that this document was researched and prepared by me or under my direct supervision and that I am a licensed Land Surveyor under the laws of the State of Minnesota.

Signature *Jim Jue*

Date 3/26/18 License No. 45874

Title:

- Land Surveyor Professional Engineer
- County Surveyor County Engineer

Doc# 268286 Fee: \$0.00 2 Pages

Property & Public Services
Property Records Division
Yellow Medicine County, Minnesota
I hereby certify that the within instrument was filed on April 6, 2018 at 1:50 PM

Janel Timm, Yellow Medicine County Recorder

By *Kelly Kruger* Deputy

STATEMENT OF EVIDENCE:

NORTH QUARTER OF SECTION 3, T114N, R46W, 5TH PM

1871 Corner was originally established by the U.S. General Land Office as a post set in raised mound.

1947 MNDT Highway Plans show corner at intersection E/W road and fence N/S with reference ties as follows:

Cor FP S 33.0'

PP SW 69.3'

FP SE 49.7'

2016 Roy Marihart completed a survey in section 34 in which he found a monument in place at the corner location.

2017-10-27 Westwood PS found a Mag nail on centerline and fence line, and found 4 reference ties of unknown source. Monument fits Highway Plans stationing within 4', accepting as corner location.