

CERTIFICATE OF LOCATION OF GOVERNMENT CORNER

 NORTHEAST Corner of Section 30 , Township 115N , Range 46W

5th Principal Meridian, State of Minnesota, County of Yellow Medicine.

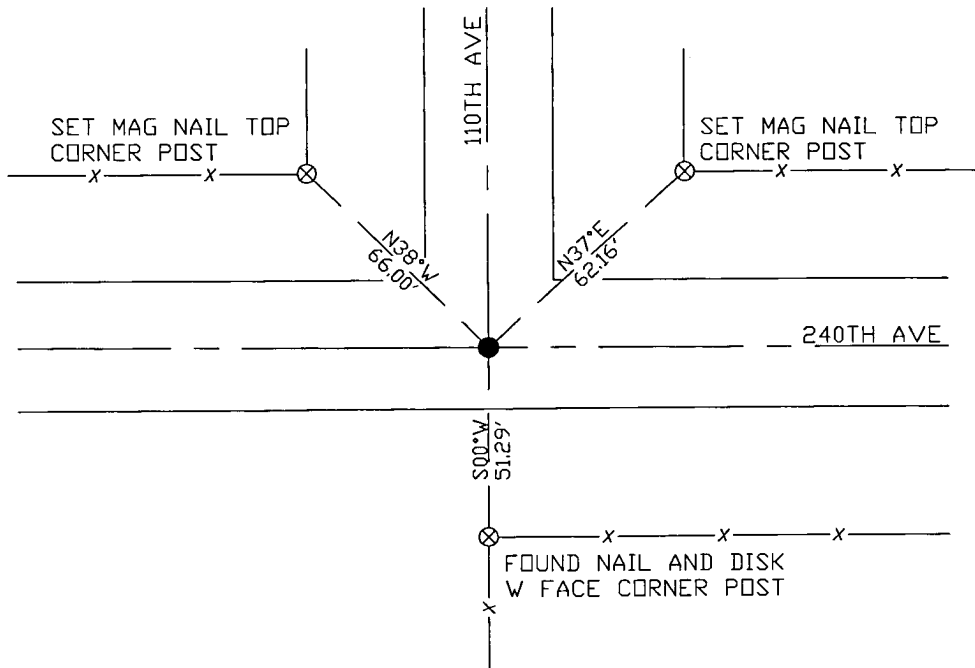
At the corner location shown on the sketch:

On 10/27/17 found a 3/4" REBAR WITH ALUMINUM CAP MARKED DNR SURVEY MARKER.
DATE

left monument as found lowered monument removed monument (explain)

On placed a
DATE

SKETCH OF REFERENCE TIES



N.T.S.

Statement of evidence for this corner location is on back of this page.

I hereby certify that this document was researched and prepared by me or under my direct supervision and that I am a licensed Land Surveyor under the laws of the State of Minnesota.

Signature
 Date 3/26/18 License No. 45874

Title:

- Land Surveyor Professional Engineer
 County Surveyor County Engineer

Doc# 268300 Fee: \$0.00 2 Pages

Property & Public Services
 Property Records Division
 Yellow Medicine County, Minnesota
 I hereby certify that the within instrument was filed on April 6, 2018 at 3:00 PM

Janel Timm, Yellow Medicine County Recorder

By Kelly Kauger Deputy

STATEMENT OF EVIDENCE:

NORTHEAST OF SECTION 30, T115N, R46W, 5TH PM

1871 Corner was originally established by the U.S. General Land Office as a post set in raised mound.

1901 Surveyors Record Book B contains a survey by John Norgaard, County Surveyor, in which shows a found stake in government mound and set a 6"x6" jasper granite monument.

1903 Surveyors Record Book contains a survey by John Norgaard, County Surveyor, in which shows a jasper granite monument in place at the corner location.

Undated Resurvey completed in which a stake and government mound were found and set top of monument level with ground.

1997 County Engineers field book for County Rd E-3 shows a field stone in place over a found stone with the following ties:

power pole SE 60.5'

power pole NE 60.6'

Station 39+37.09

2000 DNR excavated for the corner and found a bridge spike over a 12"x6"x6" field stone which was over a 6"x6" cut granite stone. A 3/4" rebar with DNR SURVEY MARKER aluminum cap was set over found monuments and a corner record was filed dated 10/30/00.

2014 Bueltel-Moseng Land Surveying completed a survey in Section 29 in which they found a DNR monument in place at the corner location.

2017-10-27 Westwood PS searched the area and found a 3/4" rebar with aluminum cap DNR SURVEY MARKER per 2000 corner record. Accepting as corner location and set 3 reference ties.