

Doc# 268921 Fee: \$0.00 4 Pages

Property & Public Services  
Property Records Division  
Yellow Medicine County, Minnesota  
I hereby certify that the within instrument  
was filed on July 9, 2018 at 10:00 AM

Janel Timm, Yellow Medicine County Recorder

By Kelly Kauger Deputy

Index No. A-25

# CERTIFICATE OF LOCATION OF GOVERNMENT CORNER

NORTHEAST Corner of Section 1, Township 115 N, Range 44 W

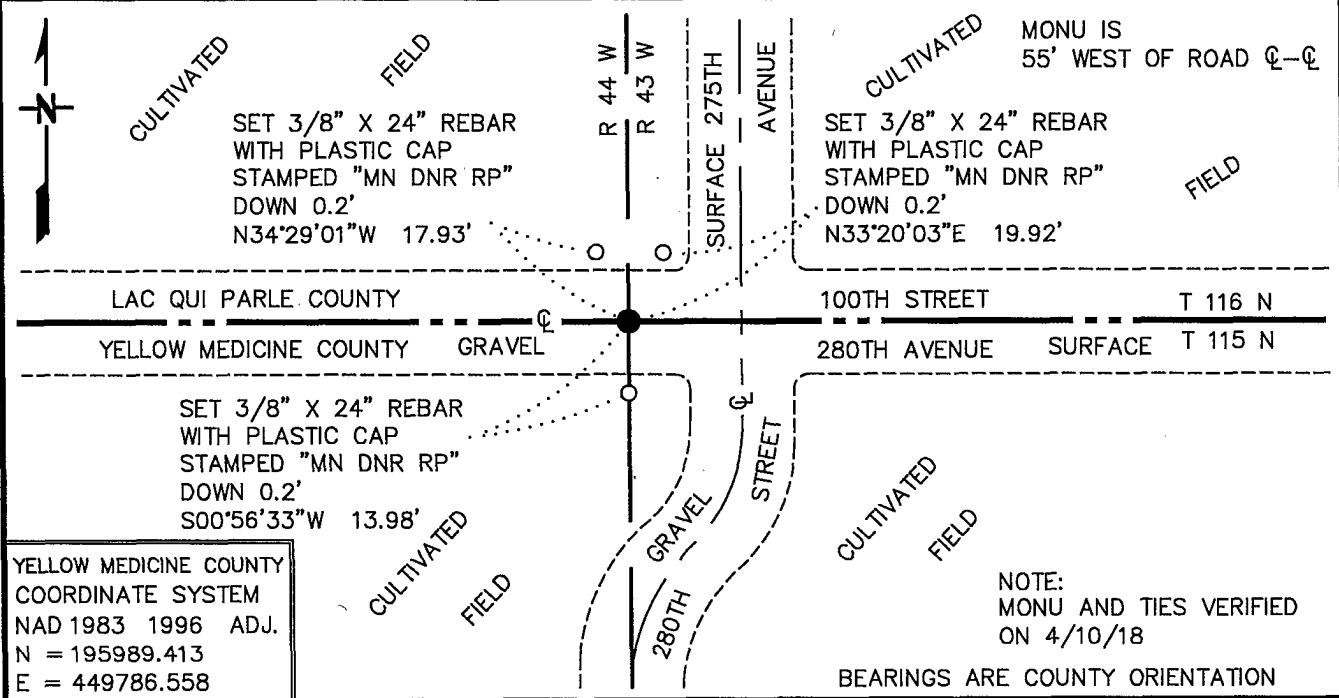
5TH Principal Meridian, State of Minnesota, County of YELLOW MEDICINE

At the corner location shown on the sketch:

■ On 9/14/10 found a 1 FOOT SQUARE SCRIBED CUT STONE, DOWN 5.0'  
DATE

■ left monument as found,  lowered monument,  removed monument (explain)

■ On 9/14/10 Placed a 3/4" X 24" REBAR WITH PLASTIC CAP STAMPED  
DATE "MN DNR LS 17003", DOWN 0.3', OVER FOUND STONE



Statement of evidence for this corner location is on back of this page.

MAY 2018  
WMA00109

I hereby certify that this plan, specification, or report was prepared by me or under my direct supervision and that I am a duly Licensed Land Surveyor under the laws of the State of Minnesota.

SIGNATURE Bruce W. Shepperd  
BRUCE W. SHEPPERD

DATE 6/13/18

License Number 17003

The DNR Division of Lands and Minerals contacted the following for survey information:

Minnesota History Center in St. Paul  
Lac Qui Parle County Recorder's Office  
Yellow Medicine County Recorder's Office  
Rodeberg and Berryman Consulting Engineer's Office of Montevideo  
MNDOT Office in St. Paul  
Yellow Medicine County Highway Engineer's Office  
Bonnema Surveys, Inc. of Willmar  
Buettel-Moseng Land Surveying of Marshall  
Marihart Surveying, P.A. of Dawson  
Zieske Land Surveying, Inc. of Windom

- 1858 U.S. General Land Office notes, obtained from the Minnesota History Center, show the corner marked with a wood post in a mound, made a pit 8 links (5.28 feet) South and a pit 8 links (5.28 feet) North. The corner is shown in a cultivable marsh:  
3.50 chains (231.00 feet) north of the south edge  
1.50 chains (99.00 feet) south of the north edge
- 1889 September 2, a red colored Surveyors Record Book, Page 35, obtained from the Yellow Medicine County Recorder's Office, contains a survey of Sections 6 and 7 T115N R43W and Section 12 T115N R44W, by Jonah Peterson, County Surveyor. Survey states that a marked stone was set in the resemblance of a large mound.  
40.53 chains (2474.98 feet) from the north quarter corner of Section 6  
80.55 chains (5316.30 feet) from the southeast corner of Section 1
- 1897 November 15, Page 1 and 34 of copies of field notes, by John Norgaard, County Surveyor, for the re-survey and establishment of the Town Corners and Town Meanders for Yellow Medicine County, obtained from the Yellow Medicine County Recorder's Office, state the following about the corner:  
"Located with equal proportional distance according to Govt field notes from the N1/4 post Sec 6 T115 R43, NW cor Sec 2 T115 R44, NE cor Sec 36 T116 R44 and SE Cor Sec 1 T115 R44"  
"Set I.M. on east side of said stone, even with the ground – marked NE S 1 T115 R44"  
The corner is shown:  
2645 feet from the north quarter corner of Section 6  
10732 feet from the northwest corner of Section 2  
5280 feet from the northeast corner of Section 36  
5280 feet from the southeast corner of Section 1
- 1901 September 27, County Surveyors Record Book B, Page 19, obtained from the Yellow Medicine County Recorder's Office, contains a survey of T115N, R43W, by John Norgaard, County Surveyor. Survey shows corner but does not indicate what kind of monument was found or set. The corner is shown:  
2645 feet from the north quarter corner of Section 6

Northeast Corner of Section 1, Township 115 North, Range 44 West  
Page 2 of 3

- 1901 September 27, County Surveyors Record Book B, Page 21, obtained from the Yellow Medicine County Recorder's Office, contains a survey of T115N, R44W, by John Norgaard, County Surveyor. Survey shows corner but does not indicate what kind of monument was found or set. The corner is shown:  
2683 feet from the north quarter corner of Section 1
- 1901 October 17, Surveyor Record Book 1, Page 371, obtained from Lac Qui Parle County Recorder's Office, contains a survey of Section 36, T116N, R44W, by George Michel, Surveyor. Survey states that a stone was found at the corner.
- 1916 September 25-28, Surveyors Record Book 1, Page 252, obtained from the Lac Qui Parle County Recorder's Office, contains a survey of Section 31, T116N, R43W, by Berner Loftfield, Civil Engineer. Survey states that the corner was established 24.5 feet north and 109 feet east of the Township Corner for Omro and Maxwell Townships, Yellow Medicine County. A marked stone with several small stones underneath it were set to mark the location of the corner. The corner is shown:  
5400 feet from the southeast corner of Section 31/northeast corner of Section 6
- 1926 April 30, a red colored Surveyors Record Book, Page 500, obtained from Yellow Medicine County Recorder's Office, contains a survey in Section 1, by John Norgaard, County Surveyor. Survey shows that a stone was found at the corner, in a road grade. The corner is shown:  
2661 feet from the east quarter corner of Section 1
- 1962 February, the Minnesota Department of Conservation assumed the location of the corner. A description of the assumed location is not given and likewise a description of what kind of monument was set to mark the location of the corner is not given. The corner is shown:  
2781.7 feet from the north quarter corner of Section 6  
5512.1 feet from the northeast corner of Section 6  
2660.2 feet from the east quarter corner of Section 1  
5350.9 feet from the southeast corner of Section 1
- 1962 July, the Minnesota Department of Conservation found the original stone at the corner, down 1.0 feet. The following ties are shown to the corner:  
on the centerline of an east-west road  
fence post, northwest, 48.60 feet  
fence post, northeast, 44.0 feet  
5512.1 feet from the northeast corner of Section 6  
2660.2 feet from the east quarter corner of Section 1
- 1968 July, the Minnesota Department of Conservation found a stone and a railroad spike at the corner. The corner was found to be:  
2781.7 feet from the north quarter corner of Section 6  
2660.2 feet from the east quarter corner of Section 1
- 1970 July 16, the Minnesota Department of Natural Resources found a railroad spike at the corner.

Northeast Corner of Section 1, Township 115 North, Range 44 West  
Page 3 of 3

- 1970 August 18, the Minnesota Department of Natural Resources found a railroad spike at the corner and took the following ties:  
5512.26 feet from the northeast corner of Section 6  
west edge of Wildlife Area Sign (north sign), east-southeast, 89.57 feet  
west edge of Wildlife Area Sign (south sign), southeast, 95.16 feet  
½ inch iron pipe, flush, north, 14.88 feet
- 1973 July 10, the Minnesota Department of Natural Resources found a railroad spike at the corner.
- 1975 May 13, the Minnesota Department of Natural Resources found a railroad spike at the corner. The railroad spike was found to be:  
2668.20 feet from the north quarter corner of Section 1  
2660.24 feet from the east quarter corner of Section 1
- 1976 May 22, the Minnesota Department of Natural Resources found a railroad spike over a 1 inch diameter iron pipe with a 60d spike beside it, at the corner. The area below the iron pipe was probed and a stone was hit below it a deep of 1 foot.
- No Date An unsigned Certificate of Survey in the North Half of Section 1, obtained from and prepared by Marihart Surveying, P.A. shows that a monument was found at the corner, but a detailed description of it is not given. The corner is shown:  
2668.29 feet from the northeast corner of Section 1  
2661.62 feet from the east quarter corner of Section 1
- 2010 September 14, the DNR Division of Lands and Minerals dug with a backhoe to dig for evidence of the corner. A spike was found at the surface and old road grades were found at depths of 3 and 4 feet and a 1 inch outside diameter by 12 inch long iron pipe was found down 4.0 feet. At a depth of 5.0 feet a 1 foot square scribed cut stone was found with section, township, and range numbers carved in it. Reset the found iron pipe horizontally on the east edge of the stone and set a ¾ inch by 24 inch rebar with plastic cap stamped "MN DNR LS 17003", down 0.3 of a foot over the scribed cut stone.
- Searched for but found no evidence of the record ties.
- Analysis of the above information led the DNR Division of Lands and Minerals to conclude that the found 1 foot square scribed cut stone marks the location of the corner.
- 2018 April 10, the DNR Division of Lands and Minerals visited the area of the corner and found the ¾ inch by 24 inch rebar with a plastic cap stamped "MN DNR LS 17003" set in 2010 and ties as shown on the sketch of reference ties.