

Property & Public Services
Property Records Division
Yellow Medicine County, Minnesota
I hereby certify that the within instrument
was filed on July 9, 2018 at 10:05 AM

Janel Timm, Yellow Medicine County Recorder

By Kelly Kuger Deputy

Index No. C-25

CERTIFICATE OF LOCATION OF GOVERNMENT CORNER

EAST QUARTER Corner of Section 1, Township 115 N, Range 44 W

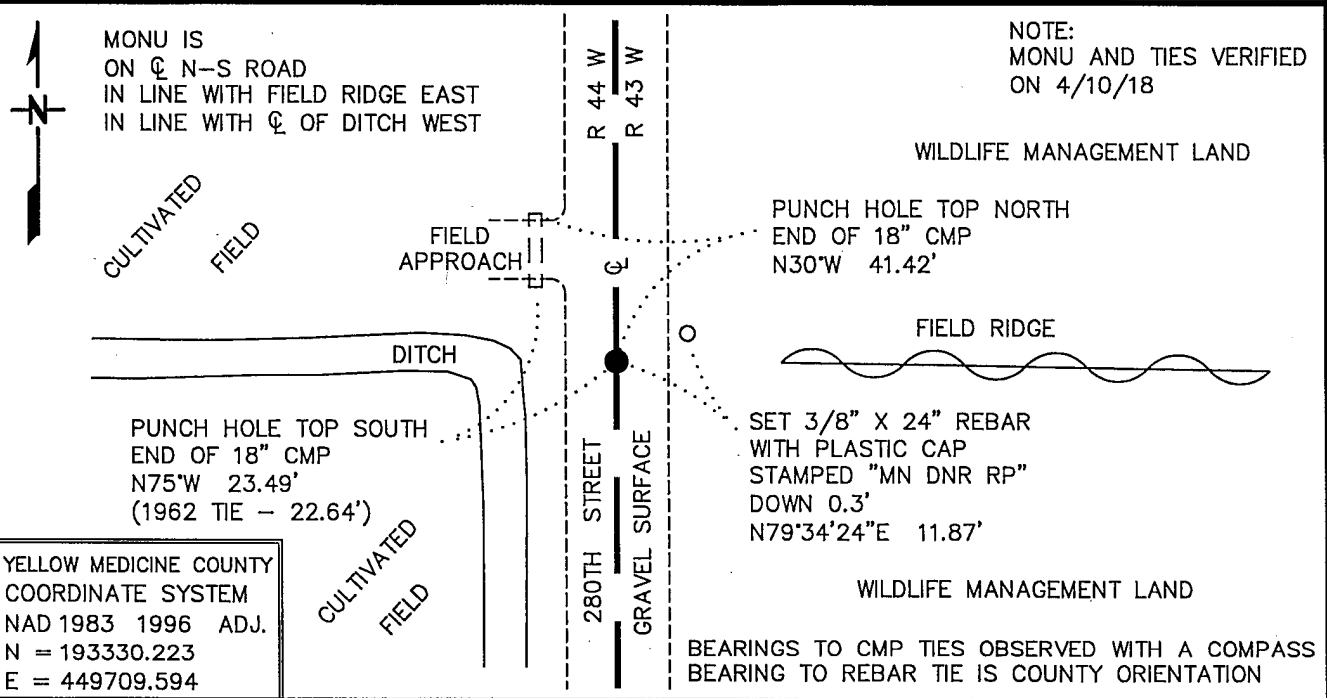
5TH Principal Meridian, State of Minnesota, County of YELLOW MEDICINE

At the corner location shown on the sketch:

■ On 10/18/10 found a 3/8" INSIDE DIAMETER IRON PIPE, DOWN 0.2'
DATE

left monument as found, lowered monument, removed monument (explain)

■ On 10/18/10 Placed a 3/4" X 24" REBAR WITH PLASTIC CAP STAMPED
DATE
"MN DNR LS 17003", IN PLACE OF FOUND IRON PIPE



Statement of evidence for this corner location is on back of this page.

MAY 2018
WMA00109

I hereby certify that this plan, specification, or report was prepared by me or under my direct supervision and that I am a duly Licensed Land Surveyor under the laws of the State of Minnesota.

SIGNATURE Bruce W. Shepperd
BRUCE W. SHEPPERD

DATE 6/13/18

License Number 17003

The DNR Division of Lands and Minerals contacted the following for survey information:

Minnesota History Center in St. Paul
Yellow Medicine County Recorder's Office
Rodeberg and Berryman Consulting Engineer's Office of Montevideo
MNDOT Office in St. Paul
Yellow Medicine County Highway Engineer's Office
Bonnema Surveys, Inc. of Willmar
Buetel-Moseng Land Surveying of Marshall
Marihart Surveying, P.A. of Dawson
Zieske Land Surveying, Inc. of Windom

1858 U.S. General Land Office notes, obtained from the Minnesota History Center, show the corner marked with a wood post in a mound and deposited coal, made trench and pits as per instructions.

The corner is shown:

40.00 chains (2640.00 feet) from the northeast corner of Section 1

40.00 chains (2640.00 feet) from the southeast corner of Section 1

1889 September 2, a red colored Surveyors Record Book, Page 35, obtained from the Yellow Medicine County Recorder's Office, contains a survey of Sections 6 and 7 T115N R43W and Section 12 T115N R44W, by Jonah Peterson, County Surveyor. Survey shows a distance of 80.55 chains (5316.30 feet) along the east line of Section 1, but no information is given about the east quarter corner of Section 1.

1914 November, a red Surveyors Record Book, Page 339, obtained from the Yellow Medicine County Recorder's Office, contains a survey of Section 6, T115N, R43W, by John Norgaard. Survey states the following about the corner:

"Located on line and equal distance between section corners"

A description of what kind of monument was set for the corner is not given and no distances are shown to the corner.

1926 April 30, a red colored Surveyor's Record Book, Page 500, obtained from Yellow Medicine County Recorder's Office, contains a survey in Section 1, by John Norgaard, County Surveyor. Survey states the following:

"E1/4 post located on line and equal distance"

The corner is shown:

2661 feet from adjoining section corners

1962 June, the Minnesota Department of Conservation established the corner on line between adjoining section corners. An iron pipe was set to mark the location of the corner and the following ties were taken to it:

on the centerline of a north-south Township Road

2660.2 feet from the northeast corner of Section 1

2690.7 feet from the southeast corner of Section 1

south end of 18 inch CMC, northwest, 22.64 feet

corner fence post, east, 36.35 feet

fence post, southeast, 61.2 feet

- 1968 July, the Minnesota Department of Conservation found an iron pipe at the corner. The corner was found to be:
2660.2 feet from the northeast corner of Section 1
- 1970 July, the Minnesota Department of Natural Resources found a red head spike at the corner. The corner is shown:
2690.78 feet from the southeast corner of Section 1
- 1972 March and April, the Minnesota Department of Natural Resources took the following ties to the corner:
nail and bottle cap in corner fence post, east, 48.32 feet
nail and bottle cap in corner fence post, west, 27.72 feet
nail and bottle cap in fence post, southeast 61.00 feet
top of steel fence post, southwest, 43.36 feet
A description of what kind of monument was found at the corner is not given.
- 1975 July 21, the Minnesota Department of Natural Resources found an iron rod at the corner. The iron rod was found to be:
2660.24 feet from the northeast corner of Section 1
2658.69 feet from the southeast corner of Section 1
- No Date An unsigned Certificate of Survey in the North Half of Section 1, obtained from and prepared by Marihart Surveying, P.A. shows that a monument was found at the corner, but a detailed description of it is not given. The corner is shown:
2661.62 feet from the northeast corner of Section 1
- 2010 October 18, the DNR Division of Lands and Minerals found a 3/8 inch inside diameter iron pipe, down 0.2 of a foot, in area of the corner. The iron pipe was found to be:
on the center line of a north-south road
in line with a field ridge east
in line with the centerline of a drainage ditch west
2660.30 feet from the northeast corner of Section 1
2658.00 feet from the southeast corner of Section 1
1.04 feet north and 3.92 feet west of the lost position

Searched for and found one record tie as shown on the sketch of reference ties.

An 8 foot north-south by 8 foot east-west by 3-foot deep hole was dug with a backhoe, the center being 1 foot south of the found iron pipe. During the excavation natural ground was found down 1.5 feet and the bottom of the hole was scanned with an electronic metal detector but no metal attraction was obtained. No old road grades were encountered in the excavation and no evidence of a monument was found.

Analysis of the above information led the DNR Division of Lands and Minerals to conclude that the found 3/8 inch inside diameter iron pipe marks the obliterated location of the corner. The iron pipe was replaced with a 3/4 inch by 24 inch rebar with a plastic cap stamped "MN DNR LS 17003" as shown on the sketch of reference ties.

East Quarter Corner of Section 1, Township 115 North, Range 44 West
Page 3 of 3

2018 April 10, the DNR Division of Lands and Minerals visited the area of the corner and found the $\frac{3}{4}$ inch by 24 inch rebar with a plastic cap stamped "MN DNR LS 17003" set in 2010 and ties as shown on the sketch of reference ties.