

Doc# 268923 Fee: \$0.00 4 Pages  
 Property & Public Services  
 Property Records Division  
 Yellow Medicine County, Minnesota  
 I hereby certify that the within instrument  
 was filed on July 9, 2018 at 10:10 AM

Janel Timm, Yellow Medicine County Recorder

By Kelly Kauger Deputy

Index No. E-25

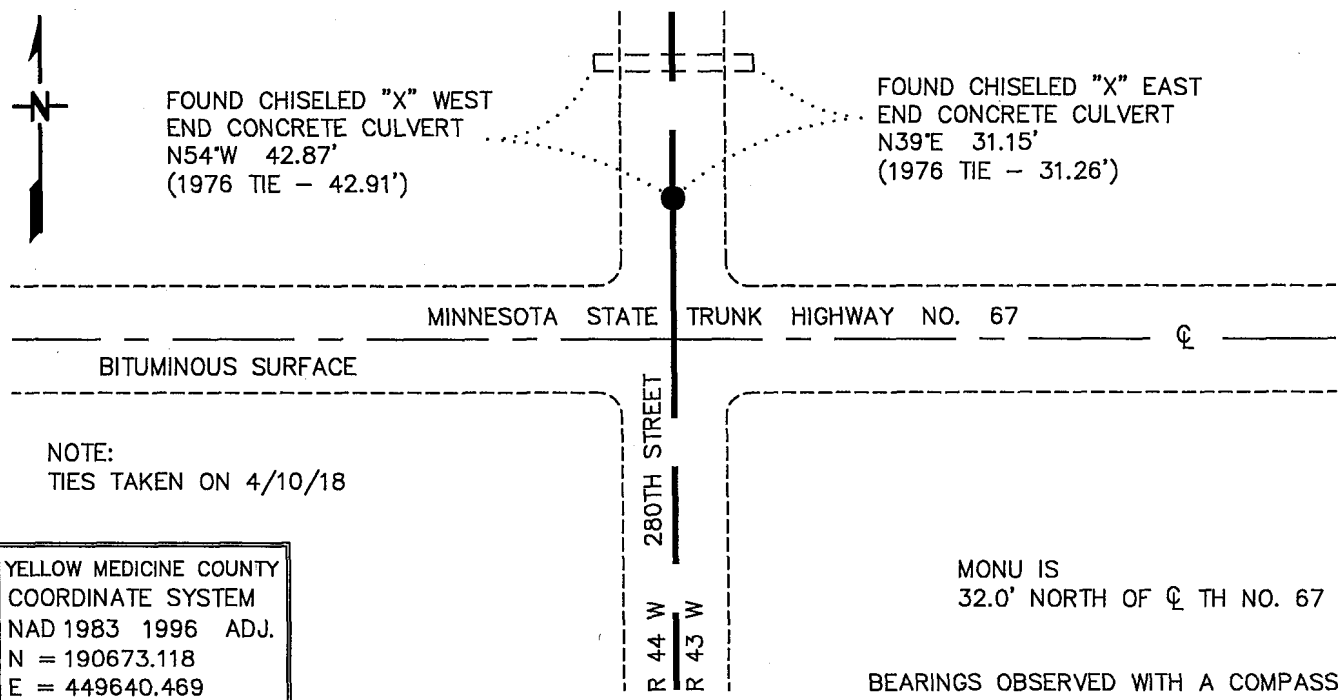
# CERTIFICATE OF LOCATION OF GOVERNMENT CORNER

NORTHEAST Corner of Section 12, Township 115 N, Range 44 W

5TH Principal Meridian, State of Minnesota, County of YELLOW MEDICINE

At the corner location shown on the sketch:

- On 8/25/10 found a MINNESOTA HIGHWAY DEPARTMENT CAST IRON MONUMENT,  
DATE DOWN 1.0'
  - left monument as found,  lowered monument,  removed monument (explain)
- On 4/10/18 Found a 3/4" DIAMETER IRON PIN, FLUSH  
DATE



YELLOW MEDICINE COUNTY  
 COORDINATE SYSTEM  
 NAD 1983 1996 ADJ.  
 N = 190673.118  
 E = 449640.469

Statement of evidence for this corner location is on back of this page.

JUNE 2018  
 WMA00109

I hereby certify that this plan, specification, or report was prepared by me or under my direct supervision and that I am a duly Licensed Land Surveyor under the laws of the State of Minnesota.

SIGNATURE Bruce W. Shepperd DATE 6/13/18 License Number 17003  
 BRUCE W. SHEPPERD

**For additional information see:**  
*CERTIFICATE OF LOCATION OF GOVERNMENT CORNER*  
*recorded on March 21, 1977 in the County Recorder's Office*  
*Document No. 168922*

The DNR Division of Lands and Minerals contacted the following for survey information:  
Minnesota History Center in St. Paul

Yellow Medicine County Recorder's Office  
Rodeberg and Berryman Consulting Engineer's Office of Montevideo  
MNDOT Office in St. Paul  
Yellow Medicine County Highway Engineer's Office  
Bonnema Surveys, Inc. of Willmar  
Buetel-Moseng Land Surveying of Marshall  
Marihart Surveying, P.A. of Dawson  
Zieske Land Surveying, Inc. of Windom

- 1926 April 30, a red colored Surveyor's Record Book, Page 500, obtained from Yellow Medicine County Recorder's Office, contains a survey in Section 1, by John Norgaard, County Surveyor. Survey shows corner but does not indicate what kind of monument was found or set. The following ties are shown to the corner:
- telephone pole, northeast, 47.7 feet
  - fence corner, southeast, 46.3 feet
  - 2661 feet from the east quarter corner of Section 1
  - 1607 feet from the south quarter corner of Section 1
- 1960 September and October, the Minnesota Department of Conservation used the intersection of roads as the location of the corner for a survey in Section 7. A description of what kind of monument was found or set at the corner is not given. The following ties are shown to the corner:
- 3128.7 feet from the north quarter corner of Section 7/ south quarter corner of Section 6
  - top center of west end of 24" concrete culvert, northwest, 55.80 feet
  - top center of east end of 24" concrete culvert, northeast, 54.10 feet
- 1962 February, the Minnesota Department of Conservation used the road intersection for the corner. A description of what kind of monument was set to mark the location of the corner is not given. The corner is shown:
- 2690.7 feet from the east quarter corner of Section 1
  - 3128.7 feet from the south quarter corner of Section 6
- 1970 January, the Minnesota Department of Natural Resources found a railroad spike at the corner, flush with the road surface.

- 1970 July, the Minnesota Department of Natural Resources set a red head spike for the corner per previous field notes. The following ties are shown to the corner:  
2690.78 feet from the east quarter corner of Section 1  
3128.69 feet from the north quarter corner of Section 7/south quarter corner of Section 6 on the centerline of Highway 67  
chiseled "X" top of concrete culvert, northeast, 63.20 feet  
chiseled "X" top of concrete culvert, northwest, 63.16 feet  
chiseled "X" top of concrete culvert, southwest, 77.92 feet
- 1971 July 28, a Minnesota Department of Natural Resources memo to the file, signed by R.E. Smith, Principal Engineering Aid, states the following:  
"on recite of the highway right-of-way map it was discovered that the section and quarter corners between Sections 6 and 7 were not in the center line of the highway as previously assumed – These sections will have to be resurveyed and the tracts revised."
- 1971 September, the Minnesota Department of Natural Resources re-established the location of the corner per stationing shown on MnDOT Highway Map for Highway 67. A nail was set to mark the location of the corner and the following ties are shown to it:  
culvert, northwest, 41.86 feet  
culvert, northeast, 32.59 feet  
north to edge of black top apron, 13.50 feet  
east to edge of black top apron, 14.00 feet  
west to edge of black top apron, 24.30 feet  
The following is noted:  
"In order to get this dug out we would have to dig out tar approach to Township Road and an old stream or ravine runs through corner location so we would have to dig down 8'-10' to natural ground."
- 1975 July 21, the Minnesota Department of Natural Resources computed a position for the corner, per previous surveys in the area. A monument was not set to mark the location of the corner. The corner is shown:  
2658.69 feet from the east quarter corner of Section 1  
3121.05 feet from the south quarter corner of Section 6
- 2010 August 25, the DNR Division of Lands and Minerals visited the area of the corner and found a Minnesota Highway Department cast iron monument, down 1.0 foot. The cast iron monument was found to be:  
2658.00 feet from the east quarter corner of Section 1  
3119.88 feet from the south quarter corner of Section 6

Analysis of the above information led the DNR Division of Lands and Minerals to conclude that the found Minnesota Highway Department cast iron monument marks the location of the corner. Searched for and found record ties as shown on the sketch of record ties.

Northeast Corner of Section 12, Township 115 North, Range 44 West  
Page 3 of 3

- 2012 MnDOT office in Willmar did an alignment survey along Minnesota Trunk Highway Number 67 and found a cast iron monument, down 12 inches at the corner. A  $\frac{3}{4}$  inch diameter by 12 inch long iron pin was set over the found cast iron monument.
- 2018 April 10, the DNR Division of Lands and Minerals visited the area of the corner and found the  $\frac{3}{4}$  inch diameter iron pin set by MnDOT in 2012 and took ties as shown on the sketch of reference ties.