

Doc# 268924 Fee: \$0.00 5 Pages

Property & Public Services  
Property Records Division  
Yellow Medicine County, Minnesota  
I hereby certify that the within instrument  
was filed on July 9, 2018 at 10:15 AM

Janel Timm, Yellow Medicine County Recorder

By Kelly Kruger Deputy

Index No. A-3

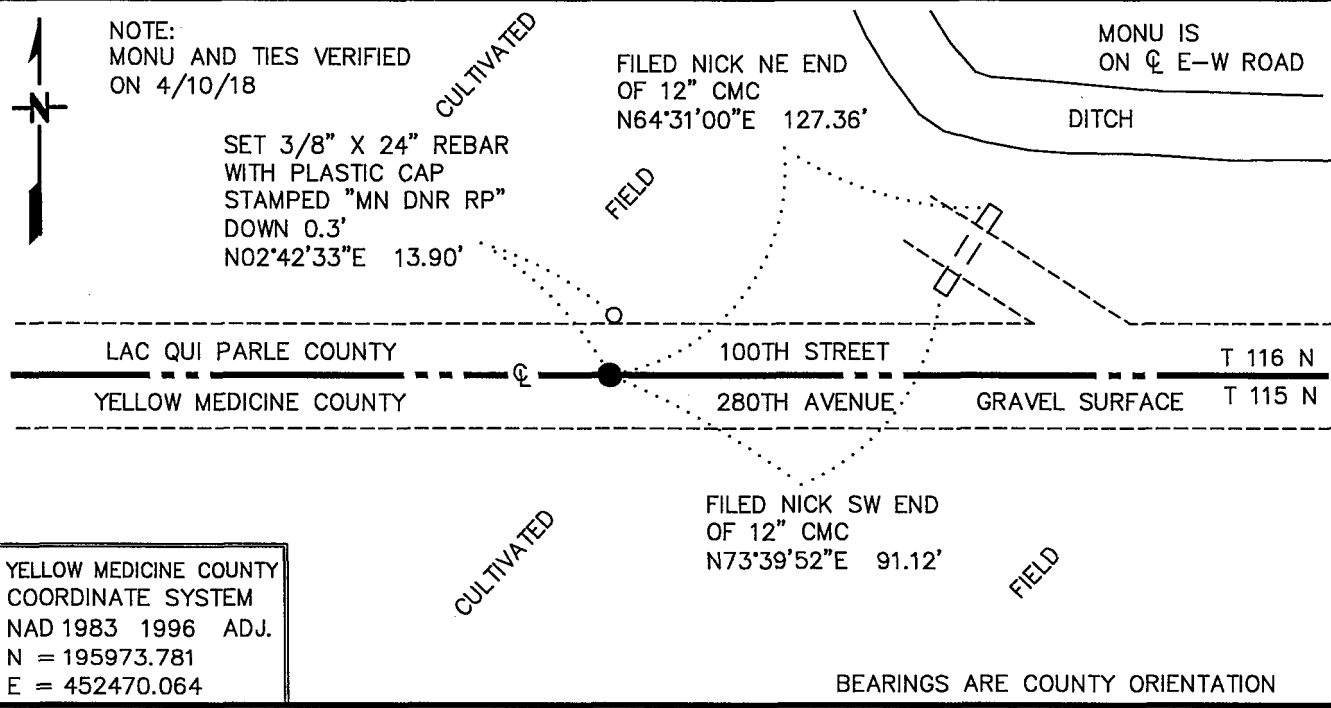
# CERTIFICATE OF LOCATION OF GOVERNMENT CORNER

NORTH QUARTER Corner of Section 6, Township 115 N, Range 43 W

5TH Principal Meridian, State of Minnesota, County of YELLOW MEDICINE

At the corner location shown on the sketch:

- On \_\_\_\_\_ found a \_\_\_\_\_  
DATE
- left monument as found,  lowered monument,  removed monument (explain)
- On 10/18/10 Placed a 3/4" X 24" REBAR WITH PLASTIC CAP STAMPED  
DATE "MN DNR LS 17003", DOWN 0.4'



Statement of evidence for this corner location is on back of this page.

MAY 2018  
WMA00109

I hereby certify that this plan, specification, or report was prepared by me or under my direct supervision and that I am a duly Licensed Land Surveyor under the laws of the State of Minnesota.

SIGNATURE Bruce W. Shepperd DATE 6/13/18 License Number 17003  
BRUCE W. SHEPPERD

The DNR Division of Lands and Minerals contacted the following for survey information:

Minnesota History Center in St. Paul  
Lac Qui Parle County Recorder's Office  
Yellow Medicine County Recorder's Office  
Rodeberg and Berryman Consulting Engineer's Office of Montevideo  
MNDOT Office in St. Paul  
Yellow Medicine County Highway Engineer's Office  
Bonnema Surveys, Inc. of Willmar  
Buetel-Moseng Land Surveying of Marshall  
Marihart Surveying, P.A. of Dawson  
Zieske Land Surveying, Inc. of Windom

1858 U.S. General Land Office notes, obtained from the Minnesota History Center, show the corner marked with a wood post in a mound and deposited coal, made trench and pits as per instructions.

The corner is shown:

40.00 chains (2640.00 feet) from the northeast corner of Section 6

39.43 chains (2602.38 feet) from the northwest corner of Section 6

These dimensions make the north line of Section 6 to be 5242.38 feet long.

1889 September 2, a red colored Surveyors Record Book, Page 35, obtained from the Yellow Medicine County Recorder's Office, contains a survey of Sections 6 and 7 T115N R43W and Section 12 T115N R44W, by Jonah Peterson, County Surveyor. Survey states that the quarter post was found at the north quarter corner of Section 6. The corner is shown:

40.53 chains (2674.98 feet) from the northwest corner of Section 6

1897 November 15, Page 1 and 34 of copies of field notes, by John Norgaard, County Surveyor, for the re-survey and establishment of the Town Corners and Town Meanders for Yellow Medicine County, obtained from the Yellow Medicine County Recorder's Office, state that the  $\frac{1}{4}$  post was found at the corner. The corner is shown:

2645 feet from the northwest corner of Section 6

1901 September 27, County Surveyors Record Book B, Page 19, obtained from the Yellow Medicine County Recorder's Office, contains a survey of T115N, R43W, by John Norgaard, County Surveyor. Survey shows corner but does not indicate what kind of monument was found or set.

The corner is shown:

2826 feet from the northeast corner of Section 6

2645 feet from the northwest corner of Section 6

These dimensions make the north line of Section 6 to be 5471 feet long.

North Quarter Corner of Section 6, Township 115 North, Range 43 West

Page 2 of 4

- 1914 November, a red Surveyors Record Book, Page 339, obtained from the Yellow Medicine County Recorder's Office, contains a survey of Section 6, T115N, R43W, by John Norgaard. Survey shows corner but does not indicate what kind of monument was found or set. The corner is shown:
- a) 2826 feet from the northeast corner of Section 6
  - b) 1413 feet from the "40" corner east of the N1/4 of Section 6 which was - "Located on line and according to distance as I found 18 years ago, when N1/4 cor was plain"
  - c) 1320 feet from a stone west of the N1/4 of Section 6, which is "line agreed on between landowners many years ago".
- 1916 September 25-28, Surveyors Record Book 1, Page 252, obtained from the Lac Qui Parle County Recorder's Office, contains a survey of Section 31, T116N, R43W, by Berner Loftfield, Civil Engineer. Survey states the corner was established midway and on line between adjoining section corners 2700 feet apart. A description of what kind of monument was set at the corner is not given.
- 1962 June, the Minnesota Department of Conservation established the corner on line between adjoining section corners, but did not set a monument to mark its location. The corner is shown:
- 2730.4 feet from the northeast corner of Section 6
  - 2781.7 feet from the northwest corner of Section 6
- These dimensions make the north line of Section 6 to be 5512.1 feet long.
- 1962 September, the Minnesota Department of Conservation conducted a survey in the NE ¼ of Section 6. The field notes of the survey give no information about the N1/4 corner of Section 6. The survey does show the "40" corner east of the N1/4 of Section 6 at a distance of 1456.8 feet from the northeast corner of Section 6. The field notes state that this "40" corner hits an existing crop line which has been accepted for many years.
- 1968 July, the Minnesota Department of Conservation found a spike at the corner and found it to be:
- 2781.7 feet from the northwest corner of Section 6
- 1970 August 18, a Minnesota Department of Natural Resources field Work Report, signed by Erwin S. Benson, field crew chief, states the following:
- "we were unable to definitely locate the N1/4 cor of Sec. 6 by any land lines in Sec 6."
- 1970 August 18, a Minnesota Department of Natural Resources set a railroad spike for the corner. The following ties are shown to the corner:
- on line between adjoining section corners
  - 2714.42 feet from the northeast corner of Section 6
  - 2797.84 feet from the northwest corner of Section 6
  - filed nick in southwest end of 12" CMC, northwest, 38.54 feet
  - filed nick in northeast end of 12" CMC, north, 56.50 feet
- These dimensions make the north line of Section 6 to be 5512.26 feet long.

North Quarter Corner of Section 6, Township 115 North, Range 43 West

Page 3 of 4

2010 October 18, the DNR Division of Lands and Minerals measured a distance of 5509.55 feet between the northeast and the northwest corners of Section 6, which is 267.17 feet longer than what the GLO measured. The lost position for the corner was computed and found to be:

2774.54 feet from the northeast corner of Section 6

2735.01 feet from the northwest corner of Section 6

Scanned a 5 foot diameter area with an electronic metal detector in search of the railroad spike set for the corner in 1970 the location being 2714.42 feet westerly of the northeast corner of Section 6 and on the centerline of an east-west road, but no metal attraction was obtained.

A 12 foot north-south by 10 foot east-west by 4 foot deep hole was dug with a backhoe, the center being 2826 feet (1901/1914 distance) west of the northeast corner of Section 6. No evidence of a monument was found in the excavation.

Then a hole was dug with a backhoe, the center being on the center line of an east-west road and 1413 feet west (1914 distance) of the northeast corner of Section 6. No evidence of a monument was found in the excavation.

Also, dug with a backhoe, the center being on the center line of an east-west road and 4146 feet (1413+1413+1320 --- 1914 distances) west of the northeast corner of Section 6. No evidence of a monument was found in the excavation.

Being that a lost position is the last resort to use in establishing a Government Corner, I did not chose to establish the corner using this method.

If you take:

a) 40.53 chains (2674.98 feet) from the northwest corner of Section 6 from the 1889 survey by Jonah Peterson

b) 2826 feet from the northeast corner of Section 6 from the 1901 and 1904 survey by John Norgaard

and add the two distances you get 5500.98 feet along the north line of Section 6, which is 8.57 feet shorter than the 2010 distance. Then take the 1889 survey and 1901/1914 survey distances and proportion between the northeast and the northwest corners of Section 6 you get a computed location for the north quarter corner of Section 6 which is:

2830.40 feet from the northeast corner of Section 6

2679.15 feet from the northwest corner of Section 6

Analysis of the above information led the DNR Division of Lands and Minerals to conclude that the location of the corner is on the centerline of an east-west road at a distance of 2826 feet per the 1901/1914 survey west of the northeast corner of Section 6. The deciding factors being:

a) the two surveys done 12 years apart by different surveyors were most likely done using different measuring equipment and field staff – so how would a proportional measurement yield an equitable solution

b) that I have more confidence in Norgaard's 1901/1914 measurements than Peterson's.

North Quarter Corner of Section 6, Township 115 North, Range 43 West  
Page 4 of 4

A  $\frac{3}{4}$  inch by 24 inch rebar with a plastic cap stamped "MN DNR LS 17003" was set to mark the location of the corner as shown on the sketch of reference ties and was found to be:

- a) 2683.54 feet from the northwest corner of Section 6
- b) 4.39 feet east of the above computed proportion
- c) 1.81 feet north and 51.45 feet west of the lost position per GLO proportional measurement

2018 April 10, the DNR Division of Lands and Minerals visited the area of the corner and found the  $\frac{3}{4}$  inch by 24 inch rebar with a plastic cap stamped "MN DNR LS 17003" set in 2010 and ties as shown on the sketch of reference ties.