

Doc# 268925 Fee: \$0.00 3 Pages

Property & Public Services
Property Records Division
Yellow Medicine County, Minnesota
I hereby certify that the within instrument
was filed on July 9, 2018 at 10:20 AM

Janel Timm, Yellow Medicine County Recorder

By Kelly Kueger Deputy

Index No. A-5

CERTIFICATE OF LOCATION OF GOVERNMENT CORNER

NORTHEAST Corner of Section 6, Township 115 N, Range 43 W

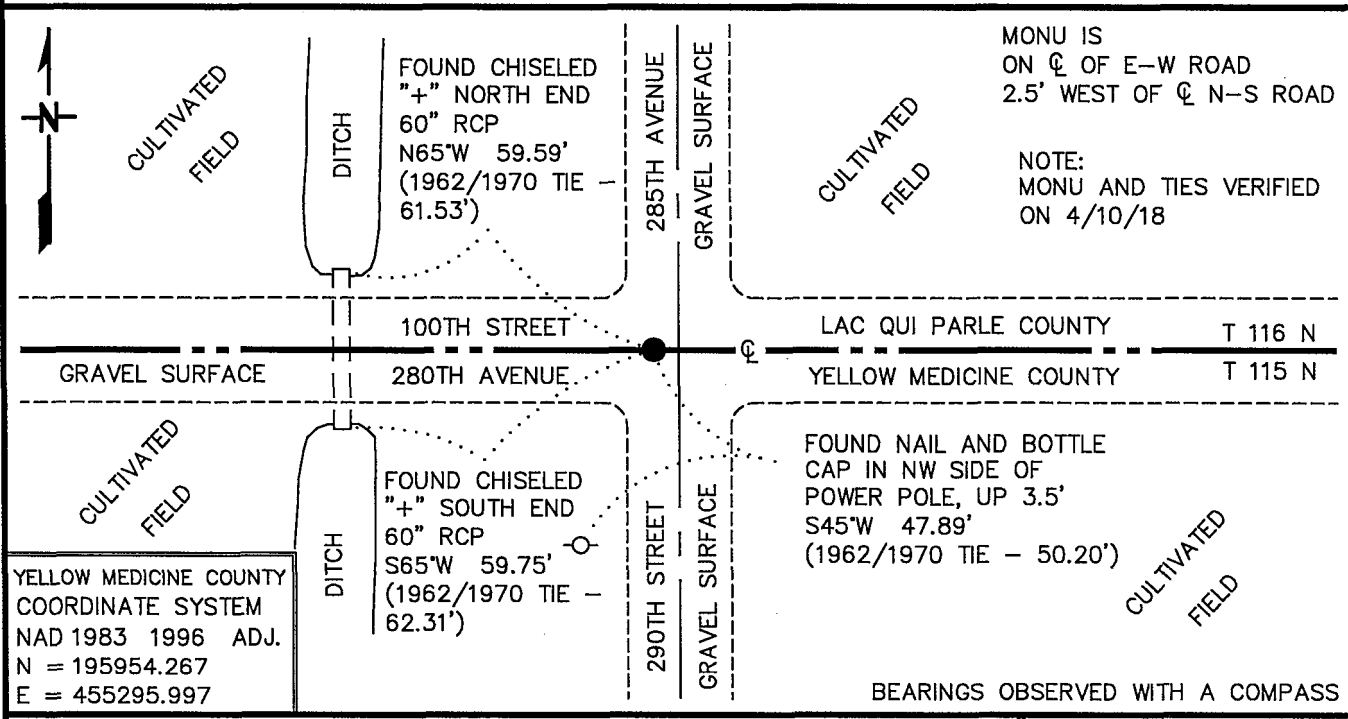
5TH Principal Meridian, State of Minnesota, County of YELLOW MEDICINE

At the corner location shown on the sketch:

■ On 9/14/10 found a 4" X 8" CUT RED JASPER GRANITE MONUMENT, DOWN 2'
DATE

■ left monument as found, lowered monument, removed monument (explain)

■ On 9/14/10 Placed a 3/4" X 12" REBAR WITH PLASTIC CAP STAMPED
DATE
"MN DNR LS 17003", DOWN 0.3', OVER FOUND MONUMENT



Statement of evidence for this corner location is on back of this page.

MAY 2018
WMA00109

I hereby certify that this plan, specification, or report was prepared by me or under my direct supervision and that I am a duly Licensed Land Surveyor under the laws of the State of Minnesota.

SIGNATURE Bruce W. Shepperd DATE 6/13/18 License Number 17003
BRUCE W. SHEPPERD

The DNR Division of Lands and Minerals contacted the following for survey information:

Minnesota History Center in St. Paul
Lac Qui Parle County Recorder's Office
Yellow Medicine County Recorder's Office
Rodeberg and Berryman Consulting Engineer's Office of Montevideo
MNDOT Office in St. Paul
Yellow Medicine County Highway Engineer's Office
Bonnema Surveys, Inc. of Willmar
Buettel-Moseng Land Surveying of Marshall
Marihart Surveying, P.A. of Dawson
Zieske Land Surveying, Inc. of Windom

- 1858 U.S. General Land Office notes, obtained from the Minnesota History Center, show the corner marked with a wood post in a mound and deposited coal, made trench and pits as per instructions.
- 1858 The GLO plat for Township 115 North, Range 43 West, obtained from the Minnesota History
1867 Center, shows the corner:
41.00 chains (2706.00 feet) from the east quarter corner of Section 6
- 1901 September 27, County Surveyors Record Book B, Page 19, obtained from the Yellow Medicine County Recorder's Office, contains a survey of T115N, R43W, by John Norgaard, County Surveyor. Survey shows corner but does not indicate what kind of monument was found or set. The corner is shown:
2826 feet from the north quarter corner of Section 6
5280 feet from the northeast corner of Section 5
- 1901 September 27, County Surveyors Record Book B, Page 103, obtained from the Yellow Medicine County Recorder's Office, contains John Norgaard's, County Surveyor, remonumentation notes for section corners in Yellow Medicine County. A note on page 103 states the following about the corner:
"Found stone as located by me 3 years ago at the intersection of roads running north, south, east and west. Set top of monument level with ground."
Norgaard set 6 inch by 6 inch by 24 inch cut jasper granite stones for monuments.
- 1914 November, a red Surveyors Record Book, Page 339, obtained from the Yellow Medicine County Recorder's Office, contains a survey of Section 6, T115N, R43W, by John Norgaard. Survey shows corner but does not indicate what kind of monument was found or set. The corner is shown:
2826 feet from the north quarter corner of Section 6
1413 feet from a stone at the "40" corner west of the NE of Section 6
- 1916 September 25-28, Surveyors Record Book 1, Page 252, obtained from the Lac Qui Parle County Recorder's Office, contains a survey of Section 31, T116N, R43W, by Berner Loftfield, Civil Engineer. Survey states that a red square stone was found at the corner of which is commonly used in Yellow Medicine County for corner stones.

Northeast Corner of Section 6, Township 115 North, Range 43 West
Page 2 of 2

- 1921 April 1, Surveyors Record Book 1, Page 330, obtained from the Lac Qui Parle County Recorder's Office, contains a survey of Section 32, T116N, R43W, by Berner Loftfield, County Surveyor. Survey states that a red granite stone was found at the corner.
- 1956 February, the Minnesota Department of Conservation used the road intersection for the corner. A description of what kind of monument was set to mark the location of the corner is not given. The corner is shown:
2664.3 feet from the east quarter corner of Section 6
5328.6 feet from the southeast corner of Section 6
- 1962 February, the Minnesota Department of Conservation set a nail for the corner at the intersection of the centerline of roads north-south-east-west. The following ties were taken to the corner:
2739.8 feet from the east quarter corner of Section 6
5402.7 feet from the southeast corner of Section 6
corner fence post, northeast, 42.82 feet
corner fence post, northwest 44.63 feet
power pole, southwest, 50.20 feet
south end of culvert, west-southwest, 62.2 feet
north end of culvert, west-northwest, 61.5 feet
- 1970 August 18, the Minnesota Department of Natural Resources, found a red head spike at the corner. The following ties are shown to the corner:
5512.26 feet from the northwest corner of Section 6
chiseled mark on top south end of 5 foot concrete culvert, southwest, 62.31 feet
chiseled mark on top north end of 5 foot concrete culvert, northwest, 61.53 feet
nail and bottle cap on northwest side of power pole, southwest, 50.19 feet (old tie)
- 2010 September 14, the DNR Division of Lands and Minerals dug with a backhoe to dig for evidence of the corner. Two spikes were found near the intersection of the centerline of roads. At a depth of 2 feet a 4 inch by 8 inch cut red jasper granite monument was found. Searched for and found record ties as shown on the sketch of ties. The cut red jasper granite monument was found to be:
2739.11 feet from the east quarter corner of Section 6
5362.52 feet from the southeast corner of Section 6
5509.55 feet from the northwest corner of Section 6

Analysis of the above information led the DNR Division of Lands and Minerals to conclude that the 4 inch by 8 inch cut red jasper granite monument marks the location of the corner.

A 1 inch diameter by 24 inch long rebar was set along the west side of the found red cut jasper granite monument and a $\frac{3}{4}$ inch by 12 inch rebar with plastic cap stamped "MN DNR LS 17003" was set over the found red cut jasper granite monument and ties were taken to it as shown on the sketch of reference ties.

- 2018 April 10, the DNR Division of Lands and Minerals visited the area of the corner and found the $\frac{3}{4}$ inch by 12 inch rebar with a plastic cap stamped "MN DNR LS 17003" set in 2010 and ties as shown on the sketch of reference ties.