

Property & Public Services  
Property Records Division  
Yellow Medicine County, Minnesota  
I hereby certify that the within instrument  
was filed on July 9, 2018 at 10:25 AM

Janel Timm, Yellow Medicine County Recorder

By Kelly Kruger Deputy

Index No. C-5

# CERTIFICATE OF LOCATION OF GOVERNMENT CORNER

EAST QUARTER Corner of Section 6, Township 115 N, Range 43 W

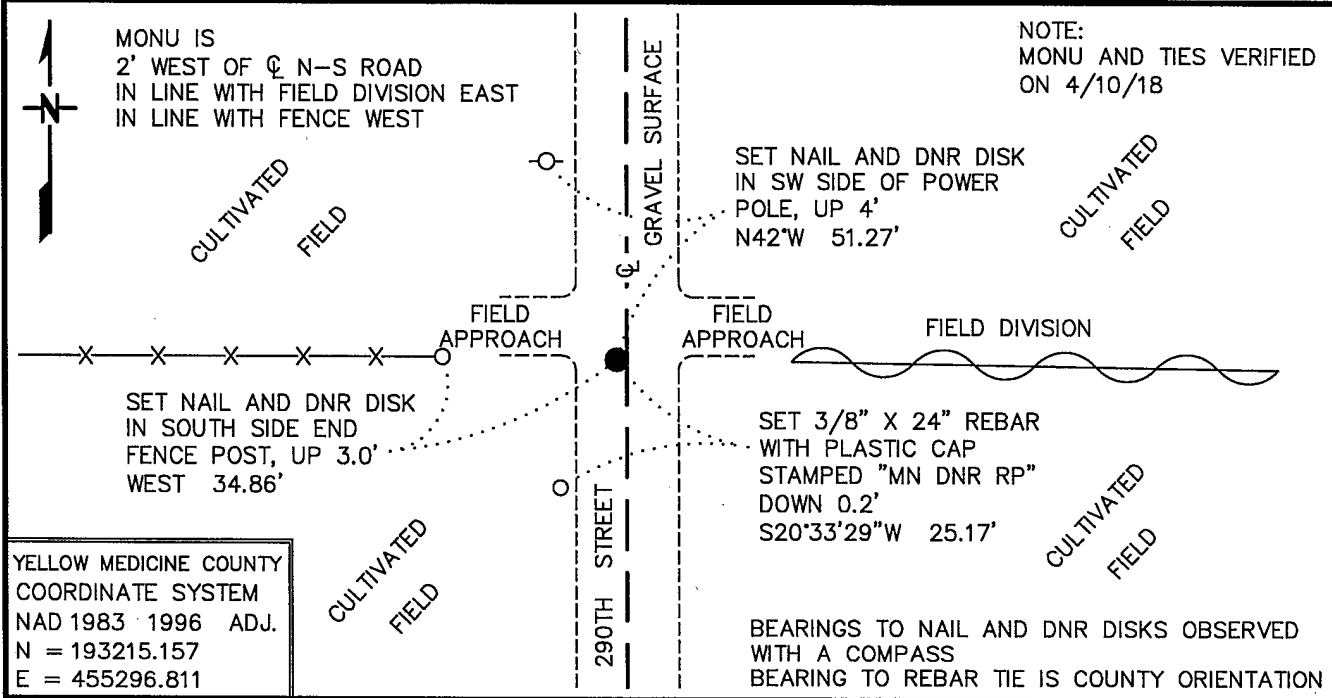
5TH Principal Meridian, State of Minnesota, County of YELLOW MEDICINE

At the corner location shown on the sketch:

■ On 10/18/10 found a 3/8" INSIDE DIAMETER IRON PIPE, DOWN 0.2'  
DATE

left monument as found,  lowered monument,  removed monument (explain)

■ On 10/18/10 Placed a 3/4" X 24" REBAR WITH PLASTIC CAP STAMPED  
DATE  
"MN DNR LS 17003", DOWN 0.4', IN PLACE OF FOUND IRON PIPE



Statement of evidence for this corner location is on back of this page.

MAY 2018  
WMA00109

I hereby certify that this plan, specification, or report was prepared by me or under my direct supervision and that I am a duly Licensed Land Surveyor under the laws of the State of Minnesota.

SIGNATURE Bruce W. Shepperd DATE 6/13/18 License Number 17003  
BRUCE W. SHEPPERD

The DNR Division of Lands and Minerals contacted the following for survey information:

Minnesota History Center in St. Paul  
Yellow Medicine County Recorder's Office  
Rodeberg and Berryman Consulting Engineer's Office of Montevideo  
MNDOT Office in St. Paul  
Yellow Medicine County Highway Engineer's Office  
Bonnema Surveys, Inc. of Willmar  
Buetel-Moseng Land Surveying of Marshall  
Marihart Surveying, P.A. of Dawson  
Zieske Land Surveying, Inc. of Windom

- 1867 U.S. General Land Office notes, obtained from the Minnesota History Center, show the corner marked with a wood post in a mound with a charred stake and pits. The corner is shown:  
41.00 chains (2706.00 feet) from the northeast corner of Section 6  
40.00 chains (2640.00 feet) from the southeast corner of Section 6
- 1914 November, a red Surveyors Record Book, Page 339, obtained from the Yellow Medicine County Recorder's Office, contains a survey of Section 6, T115N, R43W, by John Norgaard. Survey states the following about the corner:  
"Found stone set by me in govt mound 18 years ago"
- 1956 February, the Minnesota Department of Conservation established the corner on line between adjoining section corners and in line with a fence. A description of what kind of monument was set to mark the location of the corner is not given. The corner is shown:  
2664.3 feet from the northeast corner of Section 6  
2664.3 feet from the southeast corner of Section 6
- 1962 June, the Minnesota Department of Conservation established the corner on line between adjoining section corners. An iron pipe was set to mark the location of the corner and the following ties were taken to it:  
on the centerline of a north-south Township Road  
2739.8 feet from the northeast corner of Section 6  
2662.9 feet from the southeast corner of Section 6  
fence post, east-southeast, 30.75 feet  
power pole, west-northwest, 51.08 feet
- 2010 October 18, the DNR Division of Lands and Minerals found 3/8 inch inside diameter iron pipe, down 0.2 of a foot, in area of the corner. The iron pipe was found to be:  
2 feet west of the centerline of a north-south Township Road  
in line with a field division east  
in line with a fence west  
2739.11 feet from the northeast corner of Section 6  
2623.42 feet from the southeast corner of Section 6  
24.75 feet south and 2.98 feet west of the lost position

Searched for but found no evidence of the record ties.

An 8 foot north-south by 12 foot east-west by 4 foot deep hole was dug with a backhoe, the center being 25 feet north and 3 feet east of the found iron pipe - the lost position for the corner. No evidence of a monument was found in the excavation.

Also, dug a 4 foot north-south by 4 foot east-west by 4 foot deep hole with the backhoe, the center being the found iron pipe. No evidence of a monument was found in the excavation.

Analysis of the above information led the DNR Division of Lands and Minerals to conclude that the found 3/8 inch inside diameter iron pipe marks the obliterated position of the corner. The iron pipe was replaced with a 3/4 inch by 24 inch rebar with a plastic cap stamped "MN DNR LS 17003" as shown on the sketch of reference ties.

2018 April 10, the DNR Division of Lands and Minerals visited the area of the corner and found the 3/4 inch by 24 inch rebar with a plastic cap stamped "MN DNR LS 17003" set in 2010 and ties as shown on the sketch of reference ties.