

Property & Public Services
Property Records Division
Yellow Medicine County, Minnesota
I hereby certify that the within instrument
was filed on July 9, 2018 at 10:30 AM

Janel Timm, Yellow Medicine County Recorder

By Kelly Kauger Deputy

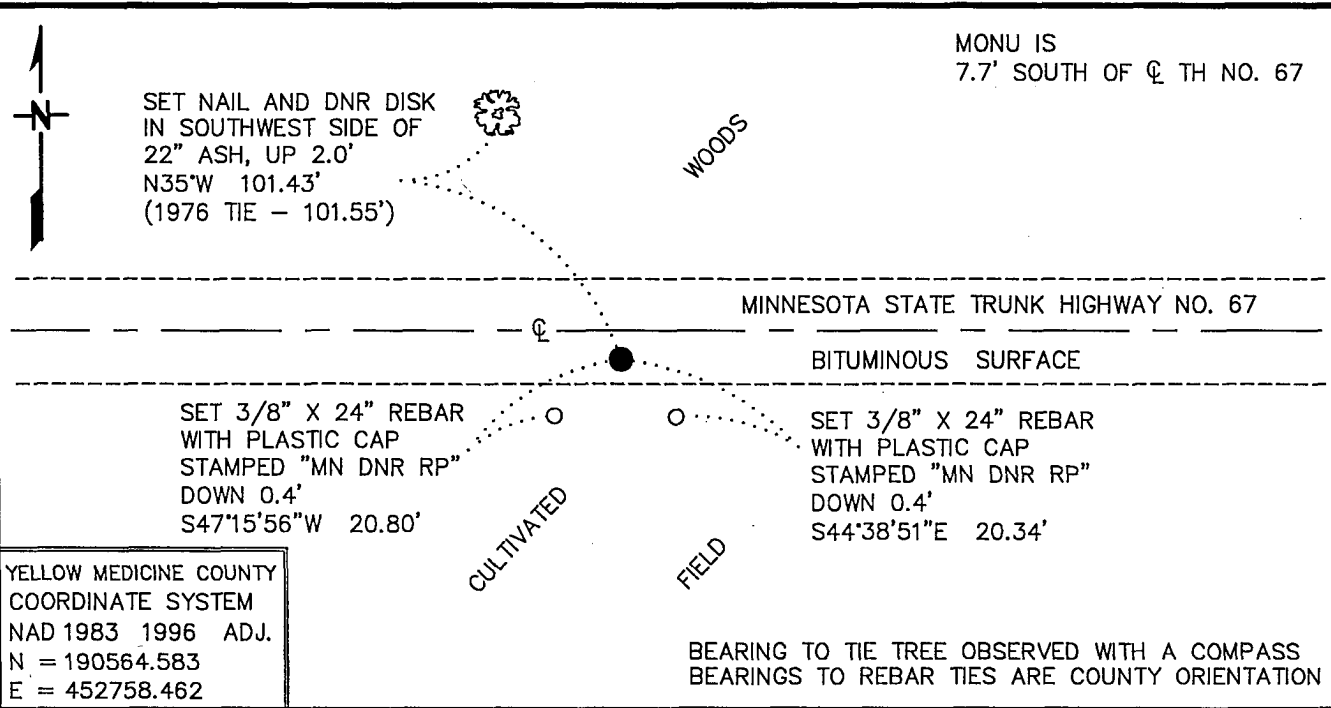
Index No. E-3

CERTIFICATE OF LOCATION OF GOVERNMENT CORNER

NORTH QUARTER Corner of Section 7, Township 115 N, Range 43 W
5TH Principal Meridian, State of Minnesota, County of YELLOW MEDICINE

At the corner location shown on the sketch:

- On 8/25/10 found a MINNESOTA HIGHWAY DEPARTMENT CAST IRON MONUMENT
DATE WITH A STAMPED BRASS PLATE, DOWN 0.2'
 - left monument as found, lowered monument, removed monument (explain)
- On 4/10/18 Found a 3/4" DIAMETER IRON PIN, FLUSH
DATE



Statement of evidence for this corner location is on back of this page. | MAY 2018 WMA00109

I hereby certify that this plan, specification, or report was prepared by me or under my direct supervision and that I am a duly Licensed Land Surveyor under the laws of the State of Minnesota.

SIGNATURE Bruce W. Shepperd DATE 6/13/18 License Number 17003
BRUCE W. SHEPPERD

For additional information see:
CERTIFICATE OF LOCATION OF GOVERNMENT CORNER
recorded on March 21, 1977 in the County Recorder's Office
Document No. 168934

The DNR Division of Lands and Minerals contacted the following for survey information:

Minnesota History Center in St. Paul
Yellow Medicine County Recorder's Office
Rodeberg and Berryman Consulting Engineer's Office of Montevideo
MNDOT Office in St. Paul
Yellow Medicine County Highway Engineer's Office
Bonnema Surveys, Inc. of Willmar
Buetel-Moseng Land Surveying of Marshall
Marihart Surveying, P.A. of Dawson
Zieske Land Surveying, Inc. of Windom

- 1889 September 2, a red colored Surveyors Record Book, Page 35, obtained from the Yellow Medicine County Recorder's Office, contains a survey of Sections 6 and 7 T115N R43W and Section 12 T115N R44W, by Jonah Peterson, County Surveyor. Survey shows a quarter post at the north quarter corner of Section 7.
- 1914 November, a red Surveyors Record Book, Page 339, obtained from the Yellow Medicine County Recorder's Office, contains a survey of Section 6, T115N, R43W, by John Norgaard. Survey states the following about the corner:
"Due south of fence line running north and in center of E.W. road – found the cor 18 years ago when cor were plain"
The corner is shown:
2536 feet from the southeast corner of Section 6
- 1960 September and October, the Minnesota Department of Conservation established the location of the corner on the centerline of an east-west road and in line with fence a fence south. A description of what kind of monument was set at the corner is not given. The corner is shown:
2537.0 feet from the northeast corner of Section 7/southeast corner of Section 6
3128.7 feet from the northwest corner of Section 7/southwest corner of Section 6
- 1962 February, the Minnesota Department of Conservation found a nail at the corner on the centerline of an east-west road. The corner is shown:
2537.0 feet from the southeast corner of Section 6
3128.7 feet from the southwest corner of Section 6
- 1970 July, the Minnesota Department of Natural Resources set a railroad spike for the corner per previous field notes. The following ties are shown to the corner:
3128.69 feet from the southwest corner of Section 6
about 4.0 feet south of centerline of Highway 67
nail and bottle cap on southwest side of 12" Ash, northwest, 98.86 feet
nail and bottle cap on east of a power pole, southwest, 94.00 feet
nail and bottle cap on west side of 14" Ash, south, 84.25 feet

- 1971 July 28, a Minnesota Department of Natural Resources memo to the file, signed by R.E. Smith, Principal Engineering Aid, states the following:
“on recite of the highway right-of-way map it was discovered that the section and quarter corners between Sections 6 and 7 were not in the center line of the highway as previously assumed – These sections will have to be resurveyed and the tracts revised.”
- 1972 March and April, the Minnesota Department of Natural Resources located a new corner 2.3 feet north of original corner. A description of what kind of monument was found at the new corner is not given.
- 2010 August 25, the DNR Division of Lands and Minerals visited the area of the corner and found a Minnesota Highway Department cast iron monument with a stamped brass plate, down 0.2 of a foot. The cast iron monument was found to be:
2545.18 feet from the northeast corner of Section 7
3119.88 feet from the northwest corner of Section 7

Analysis of the above information led the DNR Division of Lands and Minerals to conclude that the found Minnesota Highway Department cast iron monument with a stamped brass plate, which was set in the location of a 6” by 6” stone, marks the location of the corner. Searched for and found record ties as shown on the sketch of record ties.

- 2012 MnDOT office in Willmar did an alignment survey along Minnesota Trunk Highway Number 67 and found a cast iron monument, down 4 inches at the corner. A ¾ inch diameter by 4 inch long iron pin was set over the found cast iron monument.
- 2018 April 10, the DNR Division of Lands and Minerals visited the area of the corner and found the ¾ inch diameter iron pin set by MnDOT in 2012 and took ties as shown on the sketch of reference ties.