

Property & Public Services
Property Records Division
Yellow Medicine County, Minnesota
I hereby certify that the within instrument
was filed on July 9, 2018 at 10:35 AM

Janel Timm, Yellow Medicine County Recorder

By Kelly Kueger Deputy

Index No. E-5

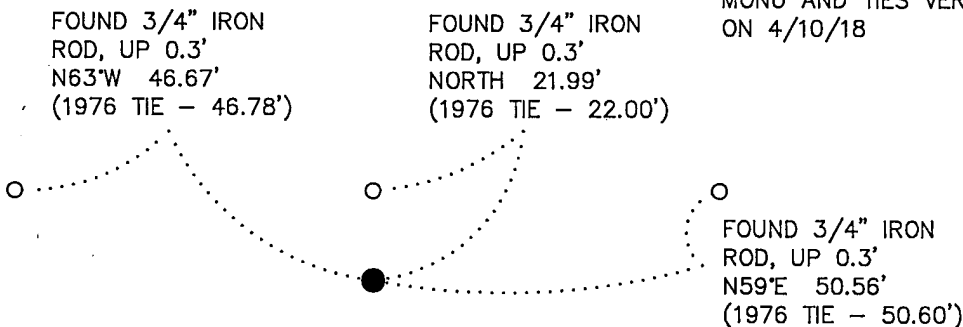
CERTIFICATE OF LOCATION OF GOVERNMENT CORNER

NORTHEAST Corner of Section 7, Township 115 N, Range 43 W

5TH Principal Meridian, State of Minnesota, County of YELLOW MEDICINE

At the corner location shown on the sketch:

- On 8/25/10 found a MINNESOTA HIGHWAY DEPARTMENT CAST IRON MONUMENT
DATE DOWN 0.5'
- left monument as found, lowered monument, removed monument (explain)
- On _____ Placed a _____
DATE



NOTE:
MONU AND TIES VERIFIED
ON 4/10/18

MINNESOTA STATE TRUNK HIGHWAY NO. 67

BITUMINOUS SURFACE



YELLOW MEDICINE COUNTY
COORDINATE SYSTEM
NAD 1983 1996 ADJ.
N = 190591.754
E = 455303.489

290TH STREET
GRAVEL SURFACE

MONU IS
IN LINE WITH \oslash OF ROAD SOUTH
38.5' NORTH OF \oslash TH NO. 67

BEARINGS OBSERVED WITH A COMPASS

Statement of evidence for this corner location is on back of this page.

JUNE 2018
WMA00109

I hereby certify that this plan, specification, or report was prepared by me or under my direct supervision and that I am a duly Licensed Land Surveyor under the laws of the State of Minnesota.

SIGNATURE

Bruce W. Shepperd
BRUCE W. SHEPPERD

DATE

6/13/18

License Number

17003

For additional information see:
CERTIFICATE OF LOCATION OF GOVERNMENT CORNER
recorded on March 21, 1977 in the County Recorder's Office
Document No. 168933

The DNR Division of Lands and Minerals contacted the following for survey information:

Minnesota History Center in St. Paul
Yellow Medicine County Recorder's Office
Rodeberg and Berryman Consulting Engineer's Office of Montevideo
MNDOT Office in St. Paul
Yellow Medicine County Highway Engineer's Office
Bonnema Surveys, Inc. of Willmar
Buetel-Moseng Land Surveying of Marshall
Marihart Surveying, P.A. of Dawson
Zieske Land Surveying, Inc. of Windom

- 1889 September 2, a red colored Surveyors Record Book, Page 35, obtained from the Yellow Medicine County Recorder's Office, contains a survey of Sections 6 and 7 T115N R43W and Section 12 T115N R44W, by Jonah Peterson, County Surveyor. Survey shows that the witness corner to the section corner was found 8 chains east, "a true corner" and the section corner was established from it. A description of what kind of monument was set for the section corner is not given.
- 1914 November, a red Surveyors Record Book, Page 339, obtained from the Yellow Medicine County Recorder's Office, contains a survey of Section 6, T115N, R43W, by John Norgaard. Survey Shows corner but does not indicate what kind of monument was found or set. The corner is shown:
2536 feet from the south quarter corner of Section 6
- 1956 February, the Minnesota Department of Conservation set an iron pin for the corner at the intersection of the centerline of roads east - west - south. The corner is shown:
2664.3 feet from the east quarter corner of Section 6
5328.6 feet from the northeast corner of Section 6
- 1958 January, the Minnesota Department of Conservation used the intersection of roads as the location of the corner for a survey in Section 8. A description of what kind of monument was found or set at the corner is not given.
- 1960 September and October, the Minnesota Department of Conservation used the intersection of roads as the location of the corner for a survey in Section 7. A description of what kind of monument was found or set at the corner is not given. The following ties are shown to the corner:
2537.0 feet from the north quarter corner of Section 7/south quarter corner of Section 6
steel mail box post, southeast, 53.10 feet
top center of west end of culvert, southwest, 50.45 feet

Northeast Corner of Section 7, Township 115 North, Range 43 West

Page 2 of 2

- 1962 February, the Minnesota Department of Conservation found a nail at the corner at the intersection of the centerline of roads east – west –south. The corner is shown:
2537 feet from the south quarter corner of Section 6
2662.9 feet from the east quarter corner of Section 6
5402.7 feet from the northeast corner of Section 6
- 1963 April, the Minnesota Department of Conservation used the location of the corner per a previous survey for a survey in Section 8. A description of what kind of monument was found or set at the corner is not given.
- 1970 November, the Minnesota Department of Natural Resources re-established corner from previous survey. A railroad spike was set to mark the location of the corner and the following ties are shown to it:
2537.0 feet from the north quarter corner of Section 7
top west end of concrete culvert, southwest, 70.20 feet
top east end concrete culvert, southeast, 71.68 feet
- 1971 July 28, a Minnesota Department of Natural Resources memo to the file, signed by R.E. Smith, Principal Engineering Aid, states the following:
“on recite of the highway right-of-way map it was discovered that the section and quarter corners between Sections 6 and 7 were not in the center line of the highway as previously assumed – These sections will have to be resurveyed and the tracts revised.”
- 1971 September, the Minnesota Department of Natural Resources re-established the location of the corner per stationing shown on MnDOT Highway Map for Highway 67. A 1 ½ inch diameter by 14 inch long pipe was set to mark the location of the corner and the following ties are shown to it:
38.5 feet north of centerline
culvert, southeast, 110.50 feet
culvert, southwest, 111.70 feet
- 2010 August 25, the DNR Division of Lands and Minerals visited the area of the corner and found a Minnesota Highway Department cast iron monument, down 0.5 of a foot. The cast iron monument was found to be:
2545.17 feet from the south quarter corner of Section 6
2623.41 feet from the east quarter corner of Section 6
5362.52 feet from the northeast corner of Section 6

Analysis of the above information led the DNR Division of Lands and Minerals to conclude that the found Minnesota Highway Department cast iron monument marks the location of the corner. Searched for and found record ties as shown on the sketch of record ties.

- 2018 April 10, the DNR Division of Lands and Minerals visited the area of the corner and found the Minnesota Highway Department cast iron monument set in 1976 and ties as shown on the sketch of reference ties.