

# CERTIFICATE OF LOCATION OF GOVERNMENT CORNER

NORTH QUARTER Corner of Section 25, Township 114, Range 42, 5TH P.M.

STATE OF MINNESOTA, County of YELLOW MEDICINE

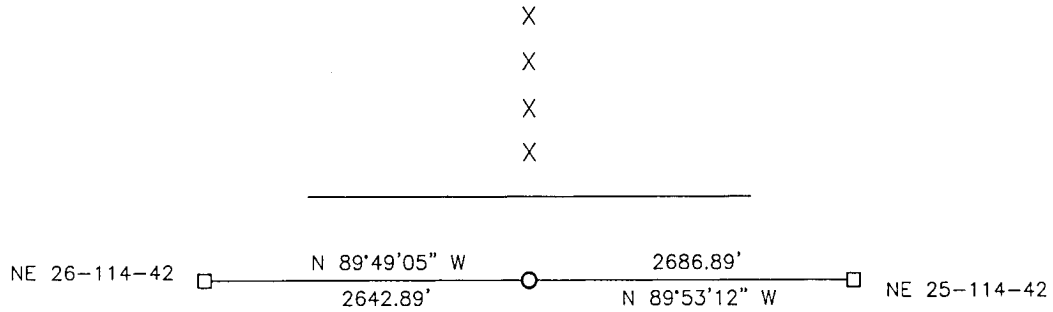
At the corner location shown on the sketch:

On \_\_\_\_\_ found a \_\_\_\_\_  
DATE

left monument as found,  lowered monument,  removed monument (explain)

On 04-09-2018 placed a 5/8" IRON WITH SEAL #50343.  
DATE

### SKETCH OF REFERENCE TIES

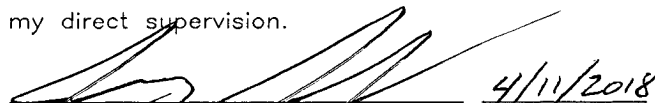


Minnesota State Plane Coordinate  
System Yellow Medicine County Datum  
NAD83 (1996)

N: 143079.072  
E: 510544.695

Statement of evidence relative to this corner location is on back of page.

I hereby certify that this document and the data contained herein was prepared by me or under my direct supervision.

  
SIGNATURE DATE 4/11/2018

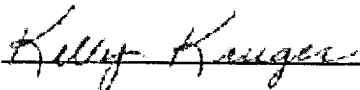
Registration No. 50343

- Land Surveyor,  Professional Engineer
- County Surveyor,  County Engineer

**Doc# 269588 Fee: \$0.00 2 Pages**

Property & Public Services  
Property Records Division  
Yellow Medicine County, Minnesota  
I hereby certify that the within instrument  
was filed on October 26, 2018 at 1:35 PM

Janel Timm, Yellow Medicine County Recorder

By  Deputy

## Statement of Evidence

In 1867, David Watson did the original subdivision of the township.

Roy Marihart set a 1/2" iron with seal #19092 in the center of the road and in line with the fences to the north and south.

On April 9, 2018, Bueltel-Moseng Land Surveying searched for the Marihart iron at the corner. We found nothing. We set a 5/8" iron with seal #50343 using information from the Marihart survey done in Section 25-114-42.