

# CERTIFICATE OF LOCATION OF GOVERNMENT CORNER

NORTHEAST Corner of Section 28, Township 116, Range 40, 5TH P.M.

STATE OF MINNESOTA, County of YELLOW MEDICINE

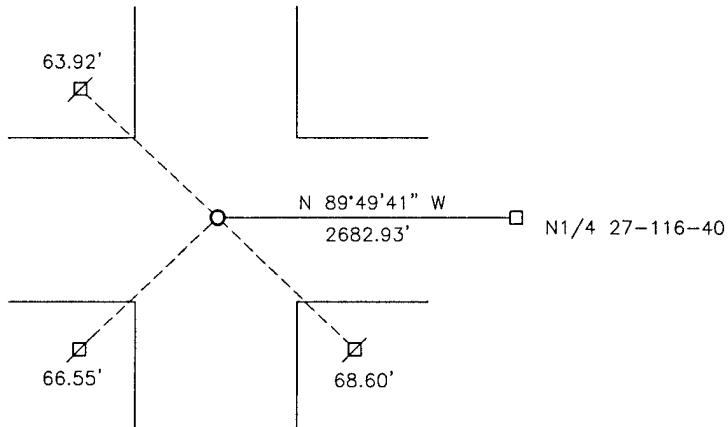
At the corner location shown on the sketch:

On 12-01-2017 found a 5/8" IRON.  
DATE

left monument as found,  lowered monument,  removed monument (explain)

On 12-01-2017 placed a 5/8" IRON WITH SEAL #43844.  
DATE

### SKETCH OF REFERENCE TIES



Minnesota State Plane Coordinate  
System Yellow Medicine County Datum  
NAD83 (1996)

N: 206725.700  
E: 560764.301

Nail and bottle cap in utility pole NW 63.92'  
Nail and bottle cap in utility pole SW 66.55'  
Nail and bottle cap in utility pole SE 68.60'

Statement of evidence relative to this corner location is on back of page.

I hereby certify that this document and the data contained herein was prepared by me or under my direct supervision.

*David B. Smith* 3/16/18  
SIGNATURE DATE

Registration No. 43844

Land Surveyor,  Professional Engineer  
 County Surveyor,  County Engineer

**Doc# 269589 Fee: \$0.00 2 Pages**

Property & Public Services  
Property Records Division  
Yellow Medicine County, Minnesota  
I hereby certify that the within instrument was filed on October 26, 2018 at 1:40 PM

Janel Timm, Yellow Medicine County Recorder

By *Kelly Kauger* Deputy

## Statement of Evidence

In 1865, Davis and Webb did the original subdivision of the township.

The Yellow Medicine County Highway Department recorded an iron rod at the corner.

On December 1, 2017, Bueltel-Moseng Land Surveying found a 5/8" iron at the corner. We left the iron in place and put a seal with #43844 on it.