

# CERTIFICATE OF LOCATION OF GOVERNMENT CORNER

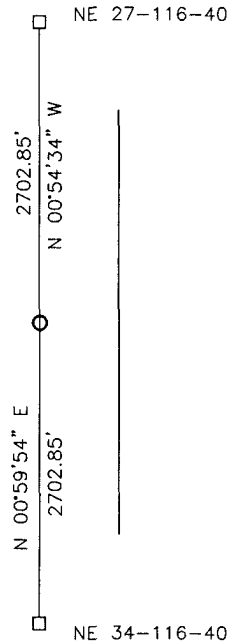
EAST QUARTER Corner of Section 27, Township 116, Range 40, 5TH P.M.

STATE OF MINNESOTA, County of YELLOW MEDICINE

At the corner location shown on the sketch:

- On \_\_\_\_\_ found a \_\_\_\_\_  
DATE
- left monument as found,  lowered monument,  removed monument (explain)
- On 12-01-2017 placed a 5/8" IRON WITH SEAL #43844.  
DATE

### SKETCH OF REFERENCE TIES




Minnesota State Plane Coordinate  
System Yellow Medicine County Datum  
NAD83 (1996)

N: 204048.462  
E: 566172.967

Statement of evidence relative to this corner location is on back of page.

I hereby certify that this document and the data contained herein was prepared by me or under my direct supervision.

 3/16/18  
SIGNATURE DATE

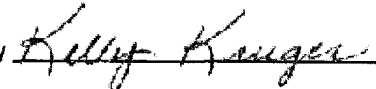
Registration No. 43844

- Land Surveyor,  Professional Engineer
- County Surveyor,  County Engineer

**Doc# 269590 Fee: \$0.00 2 Pages**

Property & Public Services  
Property Records Division  
Yellow Medicine County, Minnesota  
I hereby certify that the within instrument was filed on October 26, 2018 at 1:45 PM

Janel Timm, Yellow Medicine County Recorder

By  Deputy

## Statement of Evidence

In 1865, Davis and Webb did the original subdivision of the township.

On December 1, 2017, Bueltel-Moseng Land Surveying set a 5/8" with seal #43844 midway and on line between the section corners.