

CERTIFICATE OF LOCATION OF GOVERNMENT CORNER

NORTHEAST Corner of Section 34, Township 116, Range 40, 5TH P.M.

STATE OF MINNESOTA, County of YELLOW MEDICINE

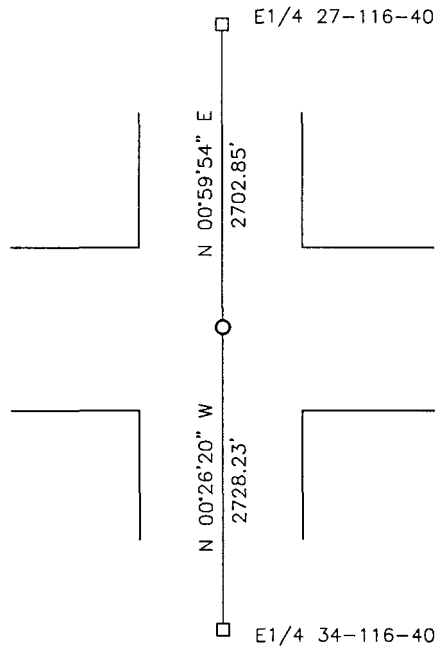
At the corner location shown on the sketch:

On _____ found a _____
DATE

left monument as found, lowered monument, removed monument (explain)

On 12-01-2017 placed a SURVEY SPIKE WITH SEAL #43844.
DATE

SKETCH OF REFERENCE TIES




Minnesota State Plane Coordinate
System Yellow Medicine County Datum
NAD83 (1996)

N: 201346.026
E: 566125.873

Statement of evidence relative to this corner location is on back of page.

I hereby certify that this document and the data contained herein was prepared by me or under my direct supervision.

 3/16/18
SIGNATURE DATE

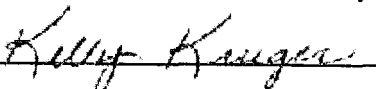
Registration No. 43844

Land Surveyor, Professional Engineer
 County Surveyor, County Engineer

Doc# 269591 Fee: \$0.00 2 Pages

Property & Public Services
Property Records Division
Yellow Medicine County, Minnesota
I hereby certify that the within instrument was filed on October 26, 2018 at 1:50 PM

Janel Timm, Yellow Medicine County Recorder

By  Deputy

Statement of Evidence

In 1865, Davis and Webb did the original subdivision of the township.

The Yellow Medicine County Highway Department recorded a pin at the corner with county coordinates.

On December 1, 2017, Buetel-Moseng Land Surveying searched for a pin at the corner. We found nothing. We set a survey spike with seal #43844 using the Yellow Medicine County Highway Department coordinates. It fell in the center of the intersection.